



HAL
open science

Living and working in rural areas, social workshops action, from integration to inclusion?

Franck Chignier-Riboulon, Mauricette Fournier

► To cite this version:

Franck Chignier-Riboulon, Mauricette Fournier. Living and working in rural areas, social workshops action, from integration to inclusion?. Building Bridges towards a Common Goal: Advancing and Promoting Equity and Accessibility amongst People with Disabilities Worldwide”, 4th World disability and rehabilitation conference/ Tikim, Nov 2019, BANGKOK, Thailand. hal-04851092

HAL Id: hal-04851092

<https://uca.hal.science/hal-04851092v1>

Submitted on 20 Dec 2024

HAL is a multi-disciplinary open access archive for the deposit and dissemination of scientific research documents, whether they are published or not. The documents may come from teaching and research institutions in France or abroad, or from public or private research centers.

L'archive ouverte pluridisciplinaire **HAL**, est destinée au dépôt et à la diffusion de documents scientifiques de niveau recherche, publiés ou non, émanant des établissements d'enseignement et de recherche français ou étrangers, des laboratoires publics ou privés.



Distributed under a Creative Commons Attribution 4.0 International License

LIVING AND WORKING IN RURAL AREAS, SOCIAL WORKSHOPS ACTION, FROM INTEGRATION TO INCLUSION?

Franck Chignier-Riboulon, Mauricette Fournier
(UMR

Territoires Lab, Clermont University, France)



Unité mixte de recherche

Territoires

Observer, analyser, accompagner
les transitions territoriales

INTRODUCTION: A FIELDWORK IN PROGRESS

- A specific research call
- A partnership research
- An inter-relational approach
- Main expectations

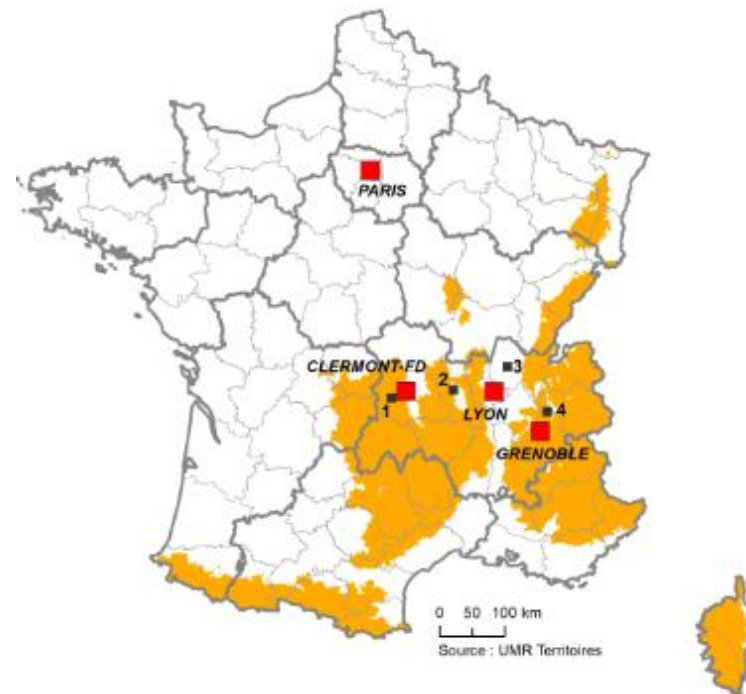


1- METHODOLOGY

A- spatiality and territoriality

- Choosing the sites
- Perimeter issue
- Local life environment

Location of the social workshops



■ Mountainous areas
□ Boundaries of the "Regions"
□ boundaries of the "Départements"

Social workshops :
1 - Rochefort-Montagne
2 - Bussy-Albieux, Crémaux
3 - Saint-Paul-de-Varax
4 - Entremont-Le-Vieux



1- METHODOLOGY

B – the fieldwork

- Workers and staff
- Immersion and observation
- Interviews

C – Data and statistics

- Understanding local environment
- Spaces and territories
- Relationship, integration



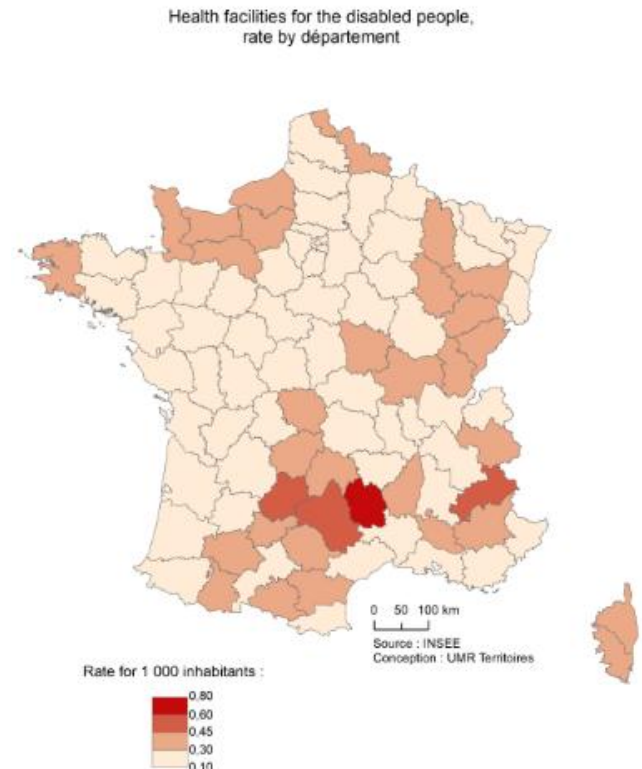
2- THE FRENCH CONTEXT, FROM EXCLUSION TO SOCIAL AND PROFESSIONAL INCLUSION

A- Disability, status and work, a long way

- 1898, law on handicap and work accidents
- 1924, law on WW1 disabled soldiers and employment
- 1949, Allowance for disabled people

B- Sheltered employment

- 1957, definition of disabled worker and sheltered employment
- 1975, status of disabled worker and integration trend
- Handicapped people as a rural resource.



2- THE FRENCH CONTEXT, FROM EXCLUSION TO SOCIAL AND PROFESSIONAL INCLUSION

C- The trend to professional inclusion

- The international evolution, thanks to WHO
 - 1980, enlargement of the definition
 - 2001, international classification
- The 2005 French law, a new situation
 - A broader definition including psychic handicap
 - Handicap defined as incapacity or diminution of capacity, for a variable time.
 - Right to participate completely in social life
 - The new context : adaptation of the society to the person, and no more adaptation of the person to the society.
 - Therefore, changing job possibility, overall from sheltered to open market.

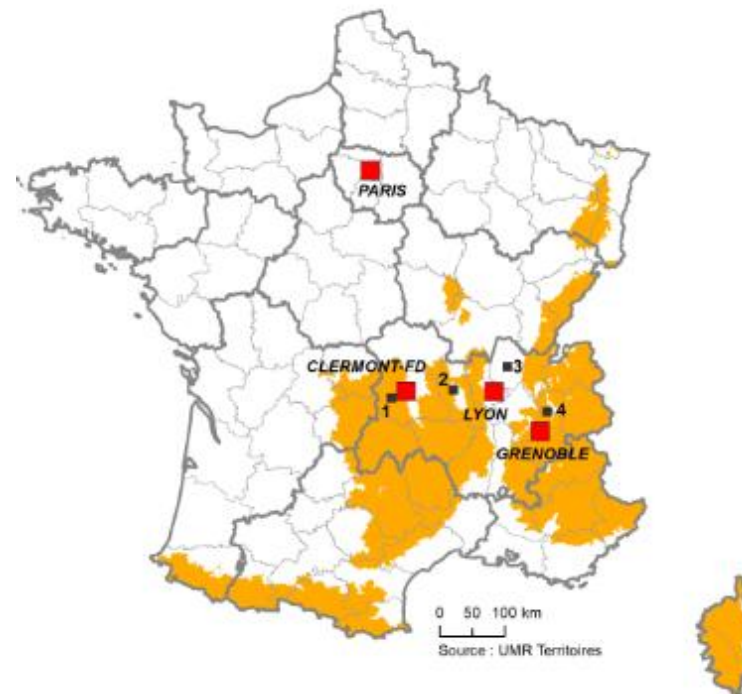


3- FOUR SITES, FOUR LOCAL SITUATIONS

A- Main situational elements of the social workshops

- An enabling environment
 - Conditions of creation
 - Involvement of local representatives
- Relationship
 - Micro-society
 - Networks
 - Direct sale on local market
 - territorialities
- Management
 - Autonomy
 - Leadership
 - Changing position opportunity

Location of the social workshops



■ Mountainous areas
□ Boundaries of the "Regions"
□ boundaries of the "Départements"

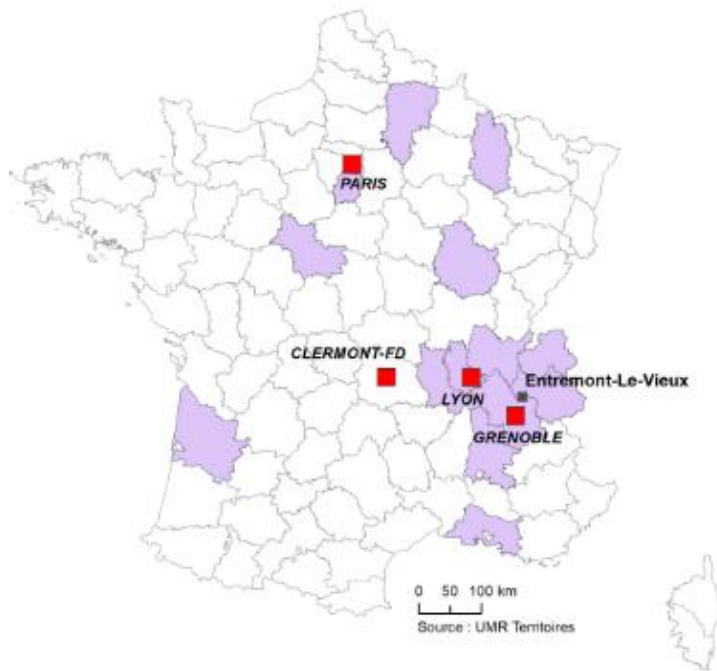
Social workshops :
1 - Rochefort-Montagne
2 - Bussy-Albieux, Crémieux
3 - Saint-Paul-de-Varax
4 - Entremont-Le-Vieux



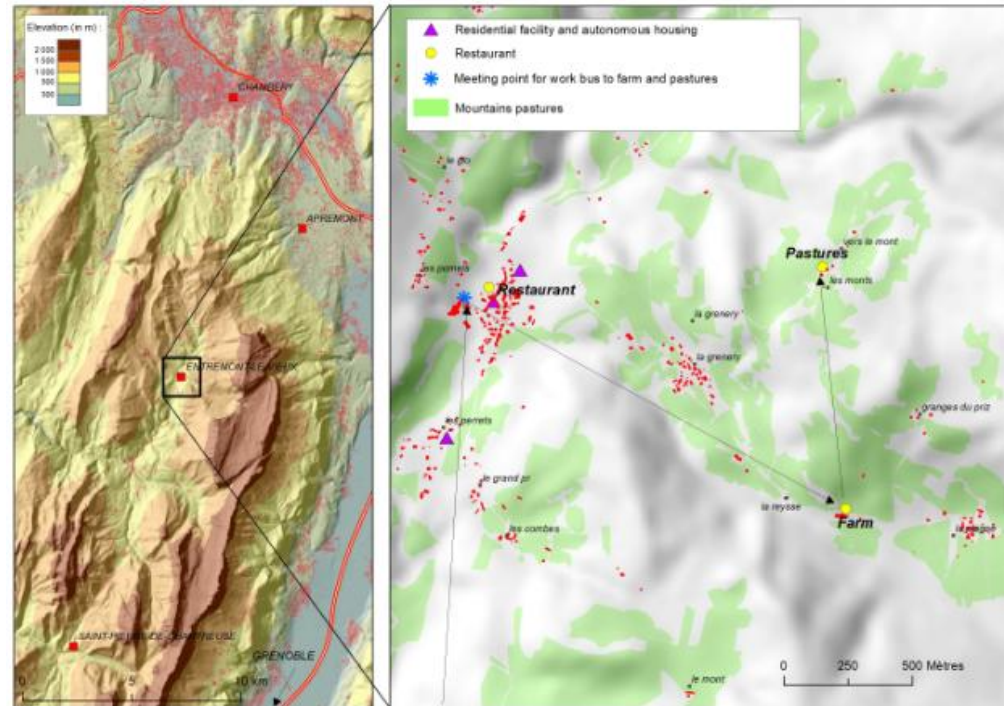
3- FOUR SITES, FOUR LOCAL SITUATIONS

B- ENTREMONT, CREATING A MICRO-SOCIETY

Social Workshop of Entremont-le-Vieux :
family geographical locations of the disabled workers



- boundaries of the "Régions"
- boundaries of the "Départements"
- Families "Departmental" distribution



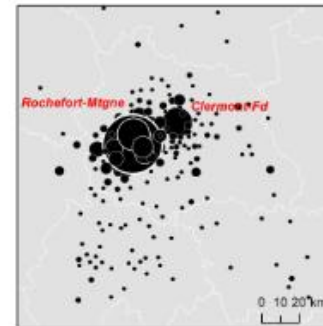
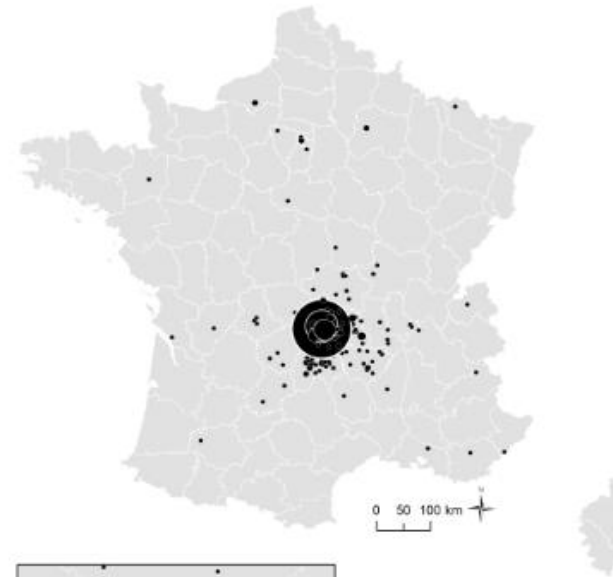
3- FOUR SITES, FOUR LOCAL SITUATIONS

C- Rochefort-Montagne,

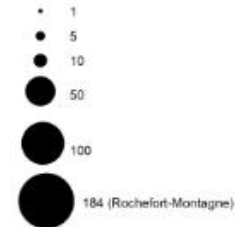
A very local environment

- Family proximity
- Local networks in wood industry
- Several sites and geographical proximities

Rochefort-Montagne ; customers of the workshop



Total of customers by municipality :



FIRST CONCLUSIONS

- An almost mid-term research
- Collective representations and first results of the fieldwork
 - From sheltered employment to open labor market...
 - Local environment and desires of employees
 - Leadership and management
- Which well-being?
 - Psychic and mental are specific handicaps
 - Quality of the environment is central in a social and professional way
 - Changing job and status is not considered as better
 - Maybe, societal evolution meets “save money” policies
 - Nevertheless, turnover rate is higher than national one

