



**HAL**  
open science

## Preclinical and clinical evidence of the association of colibactin-producing *Escherichia coli* with anxiety and depression in colon cancer

Fabien Rondepierre, Maëva Meynier, Johan Gagniere, Vincent Deneuvy, Anissa Deneuvy, Gwenaëlle Roche, Elodie Baudu, Bruno Pereira, Richard Bonnet, Nicolas Barnich, et al.

### ► To cite this version:

Fabien Rondepierre, Maëva Meynier, Johan Gagniere, Vincent Deneuvy, Anissa Deneuvy, et al.. Pre-clinical and clinical evidence of the association of colibactin-producing *Escherichia coli* with anxiety and depression in colon cancer. *World Journal of Gastroenterology*, 2024, 30 (21), pp.2817-2826. 10.3748/wjg.v30.i21.2817 . hal-04601735

**HAL Id: hal-04601735**

**<https://uca.hal.science/hal-04601735v1>**

Submitted on 5 Sep 2024

**HAL** is a multi-disciplinary open access archive for the deposit and dissemination of scientific research documents, whether they are published or not. The documents may come from teaching and research institutions in France or abroad, or from public or private research centers.

L'archive ouverte pluridisciplinaire **HAL**, est destinée au dépôt et à la diffusion de documents scientifiques de niveau recherche, publiés ou non, émanant des établissements d'enseignement et de recherche français ou étrangers, des laboratoires publics ou privés.



Distributed under a Creative Commons Attribution - NonCommercial 4.0 International License

## Basic Study

# Preclinical and clinical evidence of the association of colibactin-producing *Escherichia coli* with anxiety and depression in colon cancer

Fabien Rondepierre, Maëva Meynier, Johan Gagniere, Vincent Deneuvy, Anissa Deneuvy, Gwenaëlle Roche, Elodie Baudu, Bruno Pereira, Richard Bonnet, Nicolas Barnich, Frédéric Antonio Carvalho, Denis Pezet, Mathilde Bonnet, Isabelle Jalenques

**Specialty type:** Gastroenterology and hepatology

**Provenance and peer review:** Unsolicited article; Externally peer reviewed.

**Peer-review model:** Single blind

**Peer-review report's classification**

**Scientific Quality:** Grade B

**Novelty:** Grade A

**Creativity or Innovation:** Grade A

**Scientific Significance:** Grade A

**P-Reviewer:** Wan X, China

**Received:** February 29, 2024

**Revised:** April 17, 2024

**Accepted:** April 23, 2024

**Published online:** June 7, 2024



**Fabien Rondepierre, Vincent Deneuvy, Isabelle Jalenques,** Service de Psychiatrie de l'Adulte A et Psychologie Médicale, CHU Clermont-Ferrand, Clermont-Ferrand 63000, France

**Maëva Meynier, Johan Gagniere, Gwenaëlle Roche, Elodie Baudu, Richard Bonnet, Nicolas Barnich, Denis Pezet, Mathilde Bonnet,** M2iSH, UMR 1071, INSERM, University of Clermont Auvergne, INRAE USC 1382, Clermont-Ferrand 63001, France

**Maëva Meynier, Elodie Baudu, Frédéric Antonio Carvalho,** NeuroDol, UMR 1107, INSERM, University of Clermont Auvergne, Clermont-Ferrand 63001, France

**Johan Gagniere, Anissa Deneuvy, Denis Pezet,** Department of Digestive Surgery, CHU de Clermont-Ferrand, Clermont-Ferrand 63001, France

**Bruno Pereira,** Biostatistics Unit, Department of Clinical Research and Innovation, CHU Clermont-Ferrand, Clermont-Ferrand 63000, France

**Richard Bonnet,** Department of Bacteriology, CHU de Clermont-Ferrand, Clermont-Ferrand 63001, France

**Isabelle Jalenques,** Université Clermont Auvergne, INP, CNRS, Clermont Auvergne Institut Pascal, Clermont-Ferrand 63000, France

**Co-first authors:** Fabien Rondepierre and Maëva Meynier.

**Co-corresponding authors:** Mathilde Bonnet and Isabelle Jalenques.

**Corresponding author:** Mathilde Bonnet, PhD, Professor, M2iSH, UMR 1071, INSERM, University of Clermont Auvergne, INRAE USC 1382, 28 Place Henri Dunant, Clermont-Ferrand 63001, France. [mathilde.bonnet@uca.fr](mailto:mathilde.bonnet@uca.fr)

## Abstract

### BACKGROUND

The association between the intestinal microbiota and psychiatric disorders is becoming increasingly apparent. The gut microbiota contributes to colorectal

carcinogenesis (CRC), as demonstrated with colibactin-producing *Escherichia coli* (CoPEC).

### AIM

To evaluate the association between CoPEC prevalence and anxiety- and depressive-like behaviors with both preclinical and clinical approaches.

### METHODS

Patients followed after a CRC surgery and for whom the prevalence of CoPEC has been investigated underwent a psychiatric interview. Results were compared according to the CoPEC colonization. In parallel C57BL6/J wild type mice and mice with a CRC susceptibility were chronically infected with a CoPEC strain. Their behavior was assessed using the Elevated Plus Maze test, the Forced Swimming Test and the Behavior recognition system PhenoTyper®.

### RESULTS

In a limited cohort, all patients with CoPEC colonization presented with psychiatric disorders several years before cancer diagnosis, whereas only one patient (17%) without CoPEC did. This result was confirmed in C57BL6/J wild-type mice and in a CRC susceptibility mouse model (adenomatous polyposis coli<sup>multiple intestinal neoplasia/+</sup>). Mice exhibited a significant increase in anxiety- and depressive-like behaviors after chronic infection with a CoPEC strain.

### CONCLUSION

This finding provides the first evidence that CoPEC infection can induce microbiota-gut-brain axis disturbances in addition to its procarcinogenic properties.

**Key Words:** Colorectal cancer; Colibactin; *Escherichia coli*; Colibactin-producing *Escherichia coli*; Inflammation; Anxiety; Depression; Behavior

©The Author(s) 2024. Published by Baishideng Publishing Group Inc. All rights reserved.

**Core Tip:** Colibactin-producing *Escherichia coli* (CoPEC) have been associated to colorectal carcinogenesis. We demonstrated that all colorectal cancer patients colonized by CoPEC had psychiatric disorders that occurred several years before colorectal cancer diagnosis. Mice chronically infected with a CoPEC strain exhibited a significant increase of anxiety-/depressive-like behaviors in several tests. These first results suggest that CoPEC infection could induce microbiota-gut-brain axis disturbances in addition to their pro-carcinogenic properties.

**Citation:** Rondepierre F, Meynier M, Gagniere J, Deneuvy V, Deneuvy A, Roche G, Baudu E, Pereira B, Bonnet R, Barnich N, Carvalho FA, Pezet D, Bonnet M, Jalenques I. Preclinical and clinical evidence of the association of colibactin-producing *Escherichia coli* with anxiety and depression in colon cancer. *World J Gastroenterol* 2024; 30(21): 2817-2826

**URL:** <https://www.wjgnet.com/1007-9327/full/v30/i21/2817.htm>

**DOI:** <https://dx.doi.org/10.3748/wjg.v30.i21.2817>

## INTRODUCTION

The gastrointestinal tract and the nervous system are closely connected by a complex bidirectional system in which the gut and the central and enteric nervous systems interact with each other, engaging neuronal, endocrine and immune activities. The intestinal microbiota has been described recently as a third component of the brain-gut axis[1]. The gut microbiome is composed of a wide variety of microbial species and contributes to the maintenance of digestive tract integrity[2]. Disturbances in the gut microbiome (dysbiosis) may play a key role in the pathogenesis of gastrointestinal diseases (inflammatory bowel disease, irritable bowel syndrome, colorectal cancer, *etc.*) as well as extradigestive disorders (hypertension, autism spectrum disorders, anxiety, depression and Parkinson's disease). Clinical studies were first performed on Parkinson's disease given the high prevalence of gut dysfunction in these patients. A decrease in the abundance of the anti-inflammatory genus *Faecalibacterium* is associated with an increase in the abundance of the proinflammatory genus *Proteobacteria*[3,4]. Interestingly, *Enterobacteriaceae* levels correlated with postural instability and gait issues[4]. Modifications in the microbiome can induce depressive-like behaviors, which are comorbidities of neurodegenerative disorders. Similar dysbiosis has also been described in anxiety and depressive disorders[5-7]. These clinical observations and experiments in animal models support the suggested role of the intestinal microbiome in the development and progression of anxiety and depression[8-11].

Associations between gut microbiota disturbances and colorectal carcinogenesis (CRC) have also been demonstrated [12,13]. Metagenomic studies have shown that the gut microbiota has a greater abundance of procarcinogenic taxa, such as *Escherichia*, *Bacteroides*, and *Fusobacterium*, in CRC patients than in healthy individuals[13]. Colibactin-producing *Escherichia coli* (CoPEC) are pathobiont bacteria that have been shown to be more prevalent in the biopsies of CRC

patients than in those of control patients[14-16]. Colibactin is almost exclusively closed to *Escherichia coli* (*E. coli*) phylogroup B2 that includes the extraintestinal pathogenic *E. coli* which are the commonest causative agent of urinary tract infections and highly frequent in neonatal meningitis and sepsis[17]. *In vitro* and *in vivo* studies have also demonstrated the role of CoPEC and the colibactin toxin in CRC [15,18-21].

Severe depressive symptoms have been associated with CRC. Because microbiota-gut-brain axis disturbances and Enterobacteria imbalance have been implicated in both depression and CRC pathologies, the aim of this study was to evaluate psychiatric disorders in CRC patients colonized by CoPEC. Our clinical observations were confirmed through the study of anxiety- and depressive-like behaviors in animal models chronically infected with CoPEC.

## MATERIALS AND METHODS

### Clinical study

**Patients:** The study was recommended to all nondemented adult patients who were treated at the digestive surgery department of Clermont-Ferrand University Hospital after CRC surgery and tested for the presence of CoPEC *via* PCR analysis of CRC samples[18]. Informed consent was obtained from all subjects involved in the study.

**Psychiatric evaluation:** Patients were evaluated by a psychiatrist for current and lifetime Axis I psychiatric disorders as defined by the DSM-IV using the Mini International Neuropsychiatric Interview (MINI 5.0.0)[22], a standardized, structured psychiatric interview that has been validated in French[23,24]. The severity of depression and anxiety was determined with the Hamilton Depression Rating Scale (HDRS)[25] and Hamilton Anxiety Rating Scale (HAMA)[26], respectively. These two scales were completed by the psychiatrist after an interview, and higher scores reflected greater severity. For the HAMA, psychic and somatic anxiety subscores were used.

**Data collection:** Sociodemographic (age, sex, educational level and way of life) and medical (tumor location, TNM CRC stage, laparoscopy or laparotomy, presence of CoPEC) data were collected from both surveys and medical records *via* the Research Electronic Data Capture (REDCap) tool hosted at Clermont-Ferrand University Hospital[27]. REDCap is a secure, web-based application designed to support data capture for research studies.

### Preclinical studies

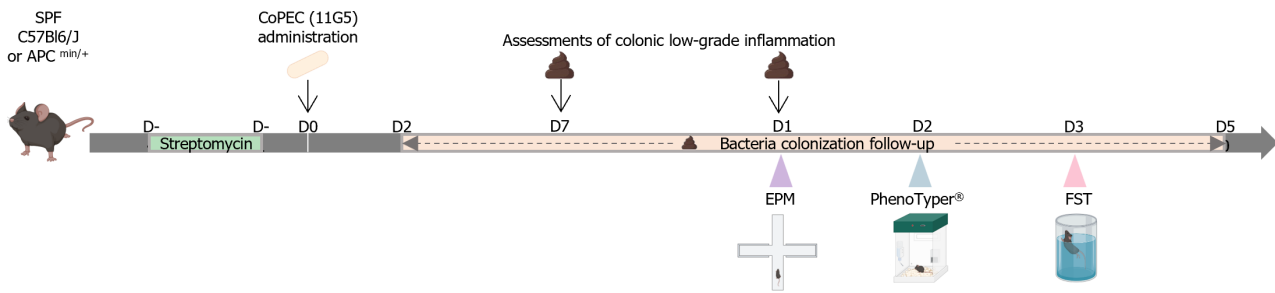
**Animals:** All animals were housed at animal biosafety level 2 conditions (21-22°C, 12:12 h light-dark cycle) with access to food and water *ad libitum*. Studies were performed using five-week-old wild-type (WT) C57BL/6 male mice ( $n = 12$  mice/group, 24 in total) purchased from Janvier Lab (Le Genest-Saint-Isle, France) and five- to six-week-old C57BL/6J-adenomatous polyposis coli (Apc)<sup>multiple intestinal neoplasia (Min)/+</sup> mice purchased from The Jackson Laboratory (Bar Harbor, Maine, United States;  $n = 4$  control and 5 infected mice, 9 in total).

To enhance bacterial colonization, streptomycin (2.5 g/L) was administered for 3 days prior to oral inoculation with  $10^9$  bacteria (Figure 1). The representative strain of CoPEC used was the 11G5 strain, which was isolated from the colonic tissue of a patient with colon cancer as previously described[28]. Control mice were inoculated with 200  $\mu$ L of sterile 1X phosphate-buffered saline (PBS). Fresh fecal pellets were collected every week (Figure 1) and resuspended in sterile 1X PBS. After serial dilution, the bacteria were enumerated by plating on LB agar medium supplemented with 50  $\mu$ g/mL ampicillin and 50  $\mu$ g/mL kanamycin and incubated at 37°C overnight. Colony forming units were enumerated and normalized to the weight of the feces.

**Colonic low-grade inflammation:** Fecal samples were collected at 7 d postinfection (DPI) and 15 DPI (Figure 1), weighed and homogenized in sterile 1X PBS. The vials were centrifuged (10000  $\times$  g, 10 min), and the supernatants were stored at -20°C until analysis. The supernatants were subsequently diluted in kit-recommended reagent (1% bovine serum albumin in 1X PBS), and the concentration of lipocalin-2 was estimated using the Mouse Lipocalin-2/NGAL DuoSet ELISA kit (R&D Systems, Minneapolis, MN) according to the manufacturer's instructions. Concentrations were normalized to the weight of the feces.

**Anxiety-like behavior:** Anxiety-like behavior was assessed using the elevated plus maze (EPM) test (ViewPoint Behavior Technology, Lissieu, France) at 15 DPI (Figure 1), as previously described[29]. Mice were acclimated to the room for at least 45 min before the test. Individual animals were placed in the central zone and allowed to explore the maze for 5 min. Mice were recorded with a camera, and the data were automatically scored by EthoVision XT<sup>®</sup> software (version 14; Noldus Information Technology, Wageningen, Netherlands). Anxiety was characterized according to the number of entries in each arm (defined as all four paws located within the arm) and the time spent in the open arms.

**Behavior recognition system PhenoTyper<sup>®</sup>:** PhenoTyper<sup>®</sup> (Noldus Information Technology, Wageningen, The Netherlands) is an automated infrared (IR) video-tracking system for measuring animal behavior[29]. Briefly, this device is composed of 8 plexiglass cages (45 cm  $\times$  45 cm), each containing an opaque plastic square shelter accessible by two entrances and delimited areas for feeding and drinking. The cages are surrounded by a top unit with IR lighting and an IR camera for video recording during light and dark cycles. At 20 DPI (Figure 1), the mice were transferred into PhenoTyper<sup>®</sup> cages (1 per cage), and animal activities were recorded with Mediarecorder<sup>®</sup> (Noldus Information Technology, Wageningen, Netherlands) for 24 h, including a 12 h dark period and a 12 h light period. During the test, the mice had *ad libitum* access to food, water and shelter. The raw data were analyzed with EthoVision XT<sup>®</sup> software (version 14; Noldus Information Technology, Wageningen, Netherlands), and various specific behaviors were compared between



**Figure 1** Experimental workflow of the preclinical models used in this study. Wild-type or adenomatous polyposis coli<sup>multiple intestinal neoplasia/+</sup> mice were chronically infected with the 11G5 CoPEC strain (10<sup>9</sup> bacteria per mouse) at D0 after pre-streptomycin treatment (from D-4 to D-1). Colonic low-grade inflammation was measured at D7 and D15. Elevated plus maze, PhenoTyper and forced swimming test were performed at D15, D20 and D35 respectively. SPF: Specific pathogen free; CoPEC: Colibactin-producing *Escherichia coli*; EPM: Elevated plus maze; FST: Forced Swimming Test (Created with BioRender.com, [Supplementary material](#)).

the infected and control animals.

**Forced Swimming Test (FST):** At 35 DPI (Figure 1), after acclimatization for 45 min, each mouse was placed in a glass cylinder (17 cm in diameter and 30 cm high) containing water at 22 ± 2 °C. The immobility time of the mice within a 6 min period was recorded. Immobility was defined as when a mouse stopped swimming and floated, making only those movements necessary to keep its head above water. Each experiment was filmed and recorded so the videos could be analyzed blindly to avoid experimenter bias.

### Statistical analysis

For clinical data, quantitative data are presented as medians (interquartile ranges) and were compared between samples with and without CoPEC with the Mann-Whitney test, while categorical data are presented as numbers (percentages) and were compared with Fisher’s exact test. Absolute differences with 95% CIs are presented for relevant factors. Factor analysis of the mixed data was performed using the dudi.mix function of the ade4 package in R (<http://cran.r-project.org/web/packages/ade4/index.html>) to determine which parameters could be used to discriminate the presence of CoPEC (yes/no). The parameters considered in this analysis were determined based on the univariate analysis results and clinical relevance among sociodemographic, surgical, tumoral and psychiatric data. Quantitative data were centered and scaled.

For animal studies, the study sample is described by numbers and percentages for categorical data and by means ± SDs [or medians (interquartile ranges) when the data were not normally distributed] for continuous data. Normality was assessed graphically and using the Shapiro-Wilk test. Student’s *t* test (or the Mann-Whitney test when the assumptions to apply the *t* test were not met) was used to compare continuous data between two groups, and the chi-square test (or Fisher’s exact test when appropriate) was used to compare categorical data between two groups. Comparisons between groups were conducted using analysis of variance (ANOVA) or the Kruskal-Wallis test when the assumptions for ANOVA were not met. Post hoc tests for two-by-two multiple comparisons were applied: Tukey-Kramer after ANOVA and Dunn after the Kruskal-Wallis test. Pearson’s test was performed to determine correlations between two independent variables.

Statistical analyses were performed with GraphPad Prism 7 software (GraphPad, La Jolla, CA, United States) and STATA V15 (StataCorp, College Station, Texas, United States). A *P* value < 0.05 was considered to indicate statistical significance, without corrections other than those mentioned above.

## RESULTS

### CoPEC infection is associated with anxiety and depressive disorders in colon cancer patients

Of the 64 eligible patients, only 12 agreed to participate. These participants did not differ from the nonparticipants in terms of age, sex, CoPEC status, TNM stage or tumor location. All clinical data are summarized in Table 1. The sex ratio was 1:1, and the median age was 67 years (63-80.5). CoPEC was detected in the colonic tissue of 6 patients (CoPEC+), and the other 6 patients were negative for CoPEC (CoPEC-). CoPEC+ patients were younger than CoPEC- patients (*P* = 0.013). No differences were observed for colon cancer clinical data.

The presence of current psychiatric disorders and HAMA and HDRS scores were comparable between CoPEC+ and CoPEC- patients. However, their psychiatric history profiles were different. Only one CoPEC- patient had psychiatric disorders (agoraphobia and specific phobia), but all CoPEC+ patients had psychiatric disorders [*P* = 0.015, absolute difference = 0.83 (0.54;1.13)]: One patient presented with a generalized anxiety disorder; one patient had a specific phobia; and four patients, including one with a specific phobia, had one or more past major depressive disorders. For all included patients, independent of CoPEC presence, the first psychiatric disorder occurred several years before colon cancer diagnosis.

**Table 1 Sociodemographic and clinical data stratified according to the presence of colibactin-producing *Escherichia coli***

	Total, n = 12	CoPEC+, n = 6	CoPEC-, n = 6	P value
<b>Sociodemographic</b>				
Age (yr)	67 (63-85)	63 (57-65)	80.5 (79-82)	<b>0.013</b>
Sex, female	6 (50)	2 (33)	4 (67)	0.567
Educational level, more than 12 yr	2 (17)	1 (17)	1 (17)	1
Cohabiting couple	10 (83)	6 (100)	4 (67)	0.455
<b>CRC</b>				
Follow-up since CRC surgery (yr)	4.9 (4.2-8.2)	6.5 (4.3-8.4)	4.7 (4.0-5.3)	0.513
Laparotomy	8 (67)	3 (50)	5 (83)	0.545
Left colon cancer	6 (50)	3 (50)	3 (50)	1
TNM CRC stage				0.545
1	2 (17)	2 (33)	-	
2	6 (50)	3 (50)	3 (50)	
3	3 (25)	1 (17)	2 (33)	
4	1 (8)	-	1 (17)	
<b>Psychiatry</b>				
Personal past anxiety/major depressive disorders	7 (58)	6 (100)	1 (17)	<b>0.015</b>
Family psychiatric disorders	4 (33)	2 (33)	2 (33)	1
HDRS total score	5.5 (3.0-7.5)	6.5 (5.0-8.0)	4.5 (2.0-7.0)	0.422
HAMA total score	6.5 (3.5-10.5)	7.5 (6.0-10.0)	4.5 (3.0-11.0)	0.52
HAMA somatic score	0.5 (0.0-2.0)	1.0 (0.0-2.0)	0.0 (0.0-2.0)	0.388
HAMA psychic score	5 (2.5-8.5)	5.5 (4.0-8.0)	4.5 (1.0-11.0)	0.936

The data are reported as medians (interquartile ranges) or *n* (%). CoPEC: Colibactin-producing *Escherichia coli*; CRC: Colorectal cancer; HAMA: Hamilton Anxiety Rating Scale; HDRS: Hamilton Depression Rating Scale.

Factor analysis of mixed data, including age, TNM CRC stage, psychiatric disorders, and HDRS and HAMA scores, revealed different clinical profiles according to the presence of CoPEC, and psychiatric disorders were a major factor contributing to these differences (Figure 2). Importantly, these results were confirmed after excluding age from the analysis (data not shown).

### **CoPEC infection induced long-lasting disturbances in colonic mucosa homeostasis and anxiety/depressive-like behavior in preclinical models**

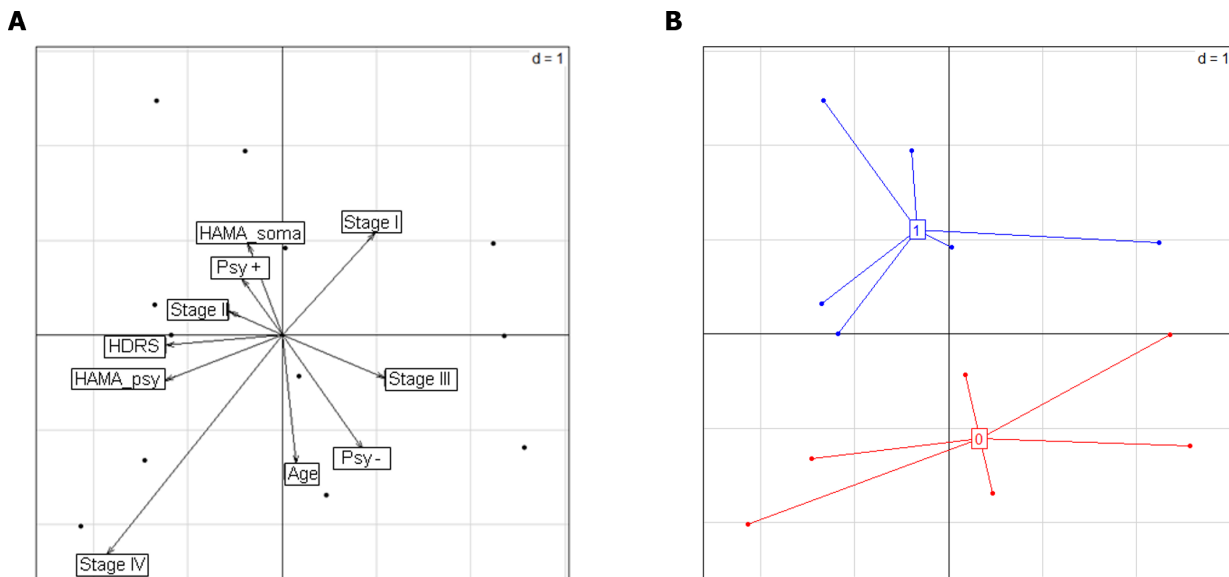
At 4 DPI, all the infected WT mice were colonized by the 11G5 CoPEC strain (Figure 3A). The bacterial load remained high throughout the experiment until 30 DPI, indicating persistent and chronic infection in the mice. Low-grade inflammation in the colon was assessed by measuring fecal lipocalin-2 levels *via* ELISA. At 7 DPI, the fecal level of lipocalin-2 was significantly greater in the infected group than in the control group ( $P < 0.05$ ; Figure 3B and C). This difference persisted up to 15 DPI ( $P < 0.05$ ).

Infected mice made significantly fewer entries into and spent less time in the open arms of the EPM than did the control group at 15 DPI ( $2.7 \pm 0.3$  vs  $6.6 \pm 0.5$  entries,  $P < 0.001$ ;  $9.9 \pm 1.3$  vs  $17.6 \pm 1.8$  s,  $P < 0.01$ ; Figure 4A and B).

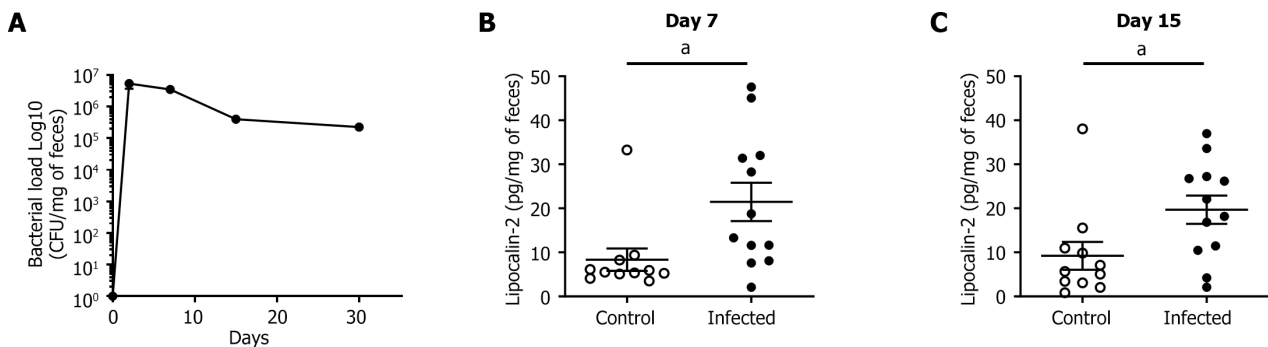
These results were confirmed in the CRC susceptibility APC<sup>min/+</sup> mouse model (Figure 5). In addition, at 35 DPI, immobility time during the FST was longer in infected mice ( $83.3 \pm 8.9$  vs  $37.7 \pm 4.7$  s,  $P < 0.001$ ; Figure 4C). Taken together, these results indicate that the infected mice exhibited significant anxiety- and depressive-like behaviors.

### **CoPEC infection induced long-lasting disturbances in well-being in preclinical models**

We analyzed the impact of CoPEC infection on animal behavior at 20 DPI with a PhenoTyper<sup>®</sup> device. The infected mice did not differ in terms of the distance traveled or the time spent in the hidden zone (data not shown). However, the total duration of digging ( $P < 0.05$ ) and sniffing ( $P < 0.01$ ) was significantly shorter during the dark period (Figure 4D-G), suggesting anxiety- and depressive-like behaviors.



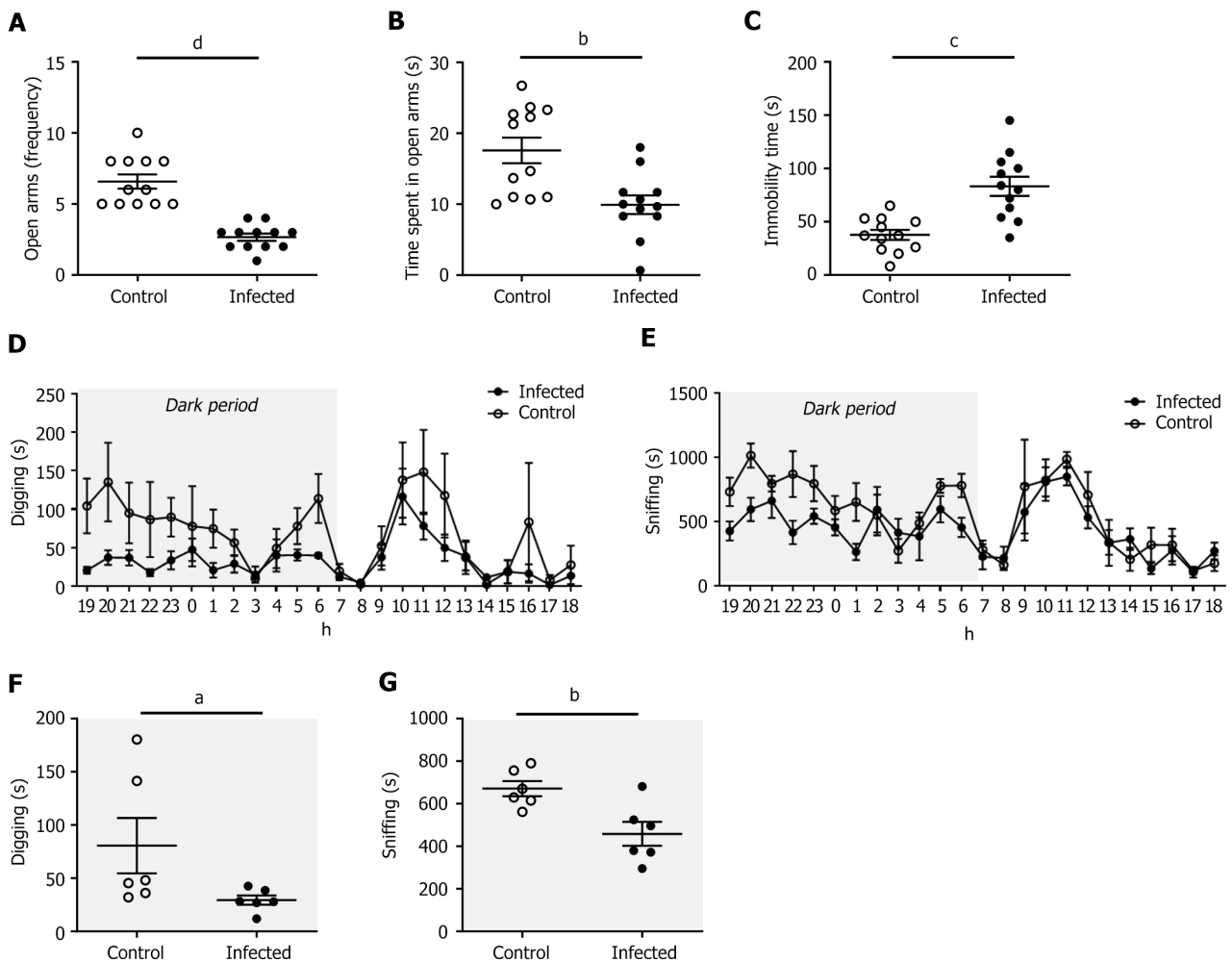
**Figure 2 Clinical data of colon cancer patients stratified according to the presence of colibactin-producing *Escherichia coli*.** A: The correlation circles obtained *via* factor analysis of the mixed data show the correlations between the variables. The shorter vectors represent variables with weak correlations and less contribution to the axis; B: Patient representation (one point for each patient) reveals two different patient profiles according to the presence of colibactin-producing *Escherichia coli* (CoPEC) in the digestive tract and variables associated with the profiles. Patients with CoPEC are presented in blue, while patients without CoPEC are presented in red. The variables associated with the presence of CoPEC were past psychiatric disorders and higher Hamilton Anxiety Rating Scale (HAMA) somatic scores. Age: Age of patient; HAMA\_psy: Hamilton psychologic anxiety score; HAMA\_soma: Hamilton somatic anxiety score; HDRS: Hamilton Depression Rating Scale; Psy-: No past psychiatric disorder; Psy+: Past psychiatric disorder; Stage: TNM stage of tumor.



**Figure 3 Chronic colibactin-producing *Escherichia coli* infection is associated with the induction of microinflammation.** A: Colonization of wild-type (WT) infected mice ( $n = 12$ ) in the gastrointestinal tract followed by counting the fecal colony form units of colibactin-producing *Escherichia coli* (11G5 strain) at different time points. B and C: Colonic low-grade inflammation was assessed by measuring fecal lipocalin-2 levels at the peak of infection (7 DPI) and 15 DPI [WT control,  $n = 11$  (stools could not be collected or analyzed for one mouse); WT infected mice,  $n = 12$ ]. The white circles represent WT control mice, while the black circles represent WT infected mice. Statistical analysis: Student's  $t$  test: <sup>a</sup> $P < 0.05$ . CFU: Colony form unit.

## DISCUSSION

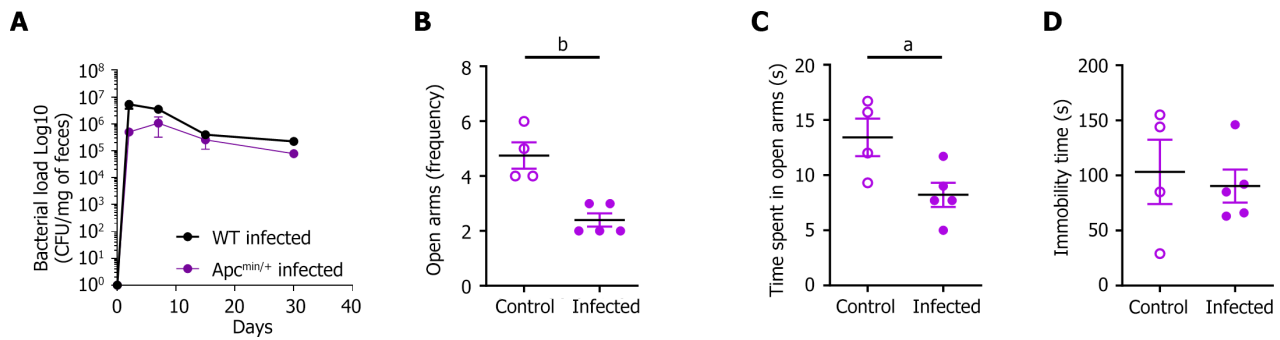
The involvement of the intestinal microbiota, particularly Enterobacteria, in CRC pathogenesis, anxiety and depression has become increasingly apparent in recent decades. In the present study, we showed, in a limited cohort, that anxiety and depressive disorders were significantly more prevalent in colon cancer patients colonized by CoPEC. Interestingly, we determined that the first psychiatric disorder occurred several years before the colon cancer diagnosis, as previously reported. Severe depressive symptoms were shown to be associated with an increased risk of CRC[30]. Preclinical models were used to confirm our clinical results. Since psychiatric disorders seemed to occur before carcinogenesis in our clinical study, we chronically infected WT mice with a CoPEC reference strain and observed a significant increase in anxiety-like behaviors in the EPM test after infection. In addition, sniffing and digging times measured with a PhenoTyper® device were significantly decreased, and immobility periods during the FST were increased after infection, suggesting anxiety- and depressive-like behaviors. The same effects on anxiety-like behaviors have also been observed in the context of colon carcinogenesis (Figure 5). These preclinical data indicated that chronic CoPEC infection could affect host behavior before colon cancer development. We hypothesized that CoPEC could colonize the gut of neonatal or young hosts as previously described[31]. This infection can induce perturbations in gut homeostasis, which may have some consequences for disturbances in the microbiota-gut-brain axis. Alterations in the gut epithelial barrier were already measured after CoPEC



**Figure 4** Anxiety- and depressive-like behaviors in wild-type mice chronically infected with colibactin-producing *Escherichia coli*. A and B: Anxiety-like behavior assessed using the elevated plus maze test at 14 DPI; A: Entry frequency and B: time spent in the open arms of wild-type (WT) control and infected mice ( $n = 12$  per group); C: Immobility time during the forced swimming test of WT control and infected mice ( $n = 12$  per group) at 35 DPI; D-F: WT control and infected ( $n = 6$  per group) mice were placed in a PhenoTyper® device at 20 DPI and recorded for 24 h to assess spontaneous behavior in a representative experiment; D and E: Total digging (D) and sniffing times (E) determined over 24 h; F and G: Mean digging (F) and sniffing times (G) measured only during the 12-h dark period. The white circles represent WT control mice, while the black circles represent infected mice. Statistical analysis: Student's *t* test: <sup>a</sup> $P < 0.05$ , <sup>b</sup> $P < 0.01$ , <sup>c</sup> $P < 0.001$ , <sup>d</sup> $P < 0.0001$ .

infection in a rat model[31]. We showed here that CoPEC infection induced a persistent increase in the level of fecal lipocalin-2, which is a marker of low-grade inflammation[32]. These disturbances (intestinal barrier alteration and inflammation) induced by CoPEC infection are known pathways associated with the anxiety- and depressive-like behaviors[33] suggesting that CoPEC infection could play a role in the physiopathology of these disorders. In addition, a recently published study showed that CoPEC could kill specifically enteric pathogens or commensals in the gut[34]. Effect of the CoPEC on intestinal homeostasis could be a direct effect on mucosa or by targeting microbiota leading to a pro-inflammatory dysbiosis. Further studies will be performed to evaluate dysbiosis and neuroinflammation in our chronic CoPEC-infected preclinical model. Our study has several limitations, particularly because of the low number of included patients and the high dropout rate. This study was proposed to colon cancer patients several years after surgery. Patients were elderly; sometimes lived far from the hospital; and were often refractory to additional surveys, notably those surveys concerning their psychiatric history. All these reasons may explain the low number of included patients. These first results require confirmation on a larger cohort. We could use the ongoing Metabiote clinical trial, which aims to study the prognostic value of CoPEC as markers for prediction of oncologic outcomes in CRC[35]. This prospective cohort could be used to verify these results on a larger number of patients. We then used preclinical models to support these clinical observations. A reverse translational research approach confirmed our clinical results. The number of animal behavioral studies, behavioral tests and even devices developed for targeted analysis of these behaviors are increasing, and these tests are being used and documented in the scientific community. Even if additional studies will be essential to investigate the involved mechanisms, such as the impact of colibactin and/or CoPEC-associated virulence factors, our reverse translational research approach confirmed our clinical results.





**Figure 5** Chronic colibactin-producing *Escherichia coli* infection is associated with anxiety-like behaviors in adenomatous polyposis coli multiple intestinal neoplasia<sup>+</sup> mice. A: Colonization of the gastrointestinal tract in wild-type (WT, *n* = 12) and adenomatous polyposis coli (Apc)<sup>multiple intestinal neoplasia (Min)<sup>+/+</sup></sup> (*n* = 5) mice infected with the colibactin-producing *Escherichia coli* strain (11G5 strain) according to fecal colony form units at different time points; B and C: Anxiety-like behavior was assessed using an elevated plus maze test at 14 DPI. Entry frequency (B) and time spent in the open arms (C) by APC<sup>Min/+</sup> control (*n* = 4) and infected (*n* = 5) mice; D: Immobility time during the forced swimming test of APC<sup>Min/+</sup> control and infected mice at 35 DPI. The black circles represent WT infected mice, the hollow purple circles represent APC<sup>Min/+</sup> uninfected mice, and the purple circles represent APC<sup>Min/+</sup> infected mice. Statistical analysis: Student's *t* test: <sup>a</sup>*P* < 0.05, <sup>b</sup>*P* < 0.01. CFU: Colony form unit; APC: Adenomatous polyposis coli; Min: Multiple intestinal neoplasia; WT: Wild-type.

## CONCLUSION

Our results support a significant role of *Enterobacteriaceae* in the development of psychiatric disorders. Although further mechanistic studies are planned, these initial results suggest that CoPEC infection could induce microbiota-gut-brain axis disturbances in addition to their procarcinogenic effects.

## ACKNOWLEDGEMENTS

We thank Joana Boureau and Pierre Sauvanet for their technical assistance and Abdelkrim Alloui (Animal Facilities) for animal care.

## FOOTNOTES

**Author contributions:** Rondepierre F, Gagniere J, Bonnet M and Jalenques I designed and coordinated the study; Deneuvy A included the patients and Deneuvy V assessed the psychiatric evaluation; Rondepierre F, Pereira B and Jalenques I analyzed and interpreted the patient data; Meynier M, Roche G and Baudu E performed the experiments, acquired and analyzed the data; Meynier M, Carvalho FA and Bonnet M interpreted the animal data; Rondepierre F, Meynier M, Bonnet M and Jalenques I wrote the manuscript; Gagniere J, Bonnet R, Barnich N, Carvalho FA and Pezet D revised the manuscript; all authors approved the final version of the article. Rondepierre F and Meynier M contributed equally to this multidisciplinary work with both clinical part (Rondepierre F) and preclinical experiments (Meynier M); Jalenques I and Bonnet M designed, financed and coordinated altogether the study and then contributed equally to manage this work as co-corresponding authors.

**Supported by** the French patient's association against cancer (ligue contre le cancer), No. 00001005238; the French government IDEX-ISITE initiative, No. 16-IDEX-0001-CAP 20-25; CPER (Nex-N-Mob); the Auvergne-Rhône-Alpes region ("Thématiques émergentes"), No. AV0004111; the Ministère de l'Enseignement supérieur, de la Recherche et de l'Innovation, INSERM, University of Clermont Auvergne [UMR1071, UMR1107], INRAE [USC-1382].

**Institutional review board statement:** The clinical study "MicrobioPsy" received approval from an Institutional Review Board (Comité de Protection des Personnes Sud-Est VI, reference 2016-A01233-48/AU1290) and was registered at ClinicalTrials.gov (NCT 02970513).

**Institutional animal care and use committee statement:** All experiments were approved by the local ethical committee (No. CE-2912) and the French Ethical Animal Use Committee.

**Conflict-of-interest statement:** Pr. Bonnet has nothing to disclose.

**Data sharing statement:** The data that support the findings of this study are openly available in Mendeley Data, "MicrobioPsy dataset", V1, <https://data.mendeley.com/drafts/bvryp9v4fj>; doi: 10.17632/bvryp9v4fj.1.

**ARRIVE guidelines statement:** The authors have read the ARRIVE guidelines, and the manuscript was prepared and revised according to the ARRIVE guidelines.

**Open-Access:** This article is an open-access article that was selected by an in-house editor and fully peer-reviewed by external reviewers.

It is distributed in accordance with the Creative Commons Attribution NonCommercial (CC BY-NC 4.0) license, which permits others to distribute, remix, adapt, build upon this work non-commercially, and license their derivative works on different terms, provided the original work is properly cited and the use is non-commercial. See: <https://creativecommons.org/licenses/by-nc/4.0/>

**Country of origin:** France

**ORCID number:** Fabien Rondepierre 0000-0002-8998-1559; Maëva Meynier 0000-0003-2571-2656; Johan Gagniere 0000-0002-1820-3362; Bruno Pereira 0000-0003-3778-7161; Nicolas Barnich 0000-0001-9465-7844; Frédéric Antonio Carvalho 0000-0003-1592-2369; Denis Pezet 0000-0001-9416-2876; Mathilde Bonnet 0000-0003-3629-7267; Isabelle Jalenques 0000-0002-8331-4544.

**S-Editor:** Lin C

**L-Editor:** A

**P-Editor:** Chen YX

## REFERENCES

- 1 **Carabotti M**, Scirocco A, Maselli MA, Severi C. The gut-brain axis: interactions between enteric microbiota, central and enteric nervous systems. *Ann Gastroenterol* 2015; **28**: 203-209 [PMID: 25830558]
- 2 **Thomas S**, Izard J, Walsh E, Batich K, Chongsathidkiet P, Clarke G, Sela DA, Muller AJ, Mullin JM, Albert K, Gilligan JP, DiGiulio K, Dilbarova R, Alexander W, Prendergast GC. The Host Microbiome Regulates and Maintains Human Health: A Primer and Perspective for Non-Microbiologists. *Cancer Res* 2017; **77**: 1783-1812 [PMID: 28292977 DOI: 10.1158/0008-5472.CAN-16-2929]
- 3 **Keshavarzian A**, Green SJ, Engen PA, Voigt RM, Naqib A, Forsyth CB, Mutlu E, Shannon KM. Colonic bacterial composition in Parkinson's disease. *Mov Disord* 2015; **30**: 1351-1360 [PMID: 26179554 DOI: 10.1002/mds.26307]
- 4 **Scheperjans F**, Aho V, Pereira PA, Koskinen K, Paulin L, Pekkonen E, Haapaniemi E, Kaakkola S, Eerola-Rautio J, Pohja M, Kinnunen E, Murros K, Auvinen P. Gut microbiota are related to Parkinson's disease and clinical phenotype. *Mov Disord* 2015; **30**: 350-358 [PMID: 25476529 DOI: 10.1002/mds.26069]
- 5 **Yu M**, Jia H, Zhou C, Yang Y, Zhao Y, Yang M, Zou Z. Variations in gut microbiota and fecal metabolic phenotype associated with depression by 16S rRNA gene sequencing and LC/MS-based metabolomics. *J Pharm Biomed Anal* 2017; **138**: 231-239 [PMID: 28219800 DOI: 10.1016/j.jpba.2017.02.008]
- 6 **Knuesel T**, Mohajeri MH. The Role of the Gut Microbiota in the Development and Progression of Major Depressive and Bipolar Disorder. *Nutrients* 2021; **14** [PMID: 35010912 DOI: 10.3390/nu14010037]
- 7 **Nikolova VL**, Smith MRB, Hall LJ, Cleare AJ, Stone JM, Young AH. Perturbations in Gut Microbiota Composition in Psychiatric Disorders: A Review and Meta-analysis. *JAMA Psychiatry* 2021; **78**: 1343-1354 [PMID: 34524405 DOI: 10.1001/jamapsychiatry.2021.2573]
- 8 **Dinan TG**, Cryan JF. The impact of gut microbiota on brain and behaviour: implications for psychiatry. *Curr Opin Clin Nutr Metab Care* 2015; **18**: 552-558 [PMID: 26372511 DOI: 10.1097/MCO.000000000000221]
- 9 **Yamawaki Y**, Yoshioka N, Nozaki K, Ito H, Oda K, Harada K, Shirawachi S, Asano S, Aizawa H, Yamawaki S, Kanematsu T, Akagi H. Sodium butyrate abolishes lipopolysaccharide-induced depression-like behaviors and hippocampal microglial activation in mice. *Brain Res* 2018; **1680**: 13-38 [PMID: 29229502 DOI: 10.1016/j.brainres.2017.12.004]
- 10 **Defaye M**, Nourrisson C, Baudu E, Lashermes A, Meynier M, Meleine M, Wawrzyniak I, Bonnin V, Barbier J, Chassaing B, Godfraind C, Gelot A, Barnich N, Ardid D, Bonnet M, Delbac F, Carvalho FA, Poirier P. Fecal dysbiosis associated with colonic hypersensitivity and behavioral alterations in chronically Blastocystis-infected rats. *Sci Rep* 2020; **10**: 9146 [PMID: 32499543 DOI: 10.1038/s41598-020-66156-w]
- 11 **Simpson CA**, Diaz-Arteche C, Eliby D, Schwartz OS, Simmons JG, Cowan CSM. The gut microbiota in anxiety and depression - A systematic review. *Clin Psychol Rev* 2021; **83**: 101943 [PMID: 33271426 DOI: 10.1016/j.cpr.2020.101943]
- 12 **Alpert O**, Begun L, Issac T, Solhkah R. The brain-gut axis in gastrointestinal cancers. *J Gastrointest Oncol* 2021; **12**: S301-S310 [PMID: 34422394 DOI: 10.21037/jgo-2019-gi-04]
- 13 **Matson V**, Chervin CS, Gajewski TF. Cancer and the Microbiome-Influence of the Commensal Microbiota on Cancer, Immune Responses, and Immunotherapy. *Gastroenterology* 2021; **160**: 600-613 [PMID: 33253684 DOI: 10.1053/j.gastro.2020.11.041]
- 14 **Arthur JC**, Perez-Chanona E, Mühlbauer M, Tomkovich S, Uronis JM, Fan TJ, Campbell BJ, Abujamel T, Dogan B, Rogers AB, Rhodes JM, Stintzi A, Simpson KW, Hansen JJ, Keku TO, Fodor AA, Jobin C. Intestinal inflammation targets cancer-inducing activity of the microbiota. *Science* 2012; **338**: 120-123 [PMID: 22903521 DOI: 10.1126/science.1224820]
- 15 **Bonnet M**, Buc E, Sauvanet P, Darcha C, Dubois D, Pereira B, Déchelotte P, Bonnet R, Pezet D, Darfeuille-Michaud A. Colonization of the human gut by *E. coli* and colorectal cancer risk. *Clin Cancer Res* 2014; **20**: 859-867 [PMID: 24334760 DOI: 10.1158/1078-0432.CCR-13-1343]
- 16 **Iyadorai T**, Mariappan V, Vellasamy KM, Wanyiri JW, Roslani AC, Lee GK, Sears C, Vadivelu J. Prevalence and association of pks+ *Escherichia coli* with colorectal cancer in patients at the University Malaya Medical Centre, Malaysia. *PLoS One* 2020; **15**: e0228217 [PMID: 31990962 DOI: 10.1371/journal.pone.0228217]
- 17 **McCarthy AJ**, Martin P, Cloup E, Stabler KA, Oswald E, Taylor PW. The Genotoxin Colibactin Is a Determinant of Virulence in *Escherichia coli* K1 Experimental Neonatal Systemic Infection. *Infect Immun* 2015; **83**: 3704-3711 [PMID: 26150540 DOI: 10.1128/IAI.00716-15]
- 18 **Gagnière J**, Bonnin V, Jarrousse AS, Cardamone E, Agus A, Uhrhammer N, Sauvanet P, Déchelotte P, Barnich N, Bonnet R, Pezet D, Bonnet M. Interactions between microsatellite instability and human gut colonization by *Escherichia coli* in colorectal cancer. *Clin Sci (Lond)* 2017; **131**: 471-485 [PMID: 28093453 DOI: 10.1042/CS20160876]
- 19 **Bossuet-Greif N**, Vignard J, Taieb F, Mirey G, Dubois D, Petit C, Oswald E, Nougayrède JP. The Colibactin Genotoxin Generates DNA Interstrand Cross-Links in Infected Cells. *mBio* 2018; **9** [PMID: 29559578 DOI: 10.1128/mBio.02393-17]
- 20 **Lopès A**, Billard E, Casse AH, Villéger R, Veziat J, Roche G, Carrier G, Sauvanet P, Briat A, Pagès F, Naimi S, Pezet D, Barnich N, Dumas B, Bonnet M. Colibactin-positive *Escherichia coli* induce a procarcinogenic immune environment leading to immunotherapy resistance in

- colorectal cancer. *Int J Cancer* 2020; **146**: 3147-3159 [PMID: 32037530 DOI: 10.1002/ijc.32920]
- 21 **Pleguezuelos-Manzano C**, Puschhof J, Rosendahl Huber A, van Hoeck A, Wood HM, Nomburg J, Gurjao C, Manders F, Dalmaso G, Stege PB, Paganelli FL, Geurts MH, Beumer J, Mizutani T, Miao Y, van der Linden R, van der Elst S; Genomics England Research Consortium, Garcia KC, Top J, Willems RJJ, Giannakis M, Bonnet R, Quirke P, Meyerson M, Cuppen E, van Boxtel R, Clevers H. Mutational signature in colorectal cancer caused by genotoxic pks(+) *E. coli*. *Nature* 2020; **580**: 269-273 [PMID: 32106218 DOI: 10.1038/s41586-020-2080-8]
- 22 **Sheehan DV**, Lecrubier Y, Sheehan KH, Amorim P, Janavs J, Weiller E, Hergueta T, Baker R, Dunbar GC. The Mini-International Neuropsychiatric Interview (M.I.N.I.): the development and validation of a structured diagnostic psychiatric interview for DSM-IV and ICD-10. *J Clin Psychiatry* 1998; **59** Suppl 20: 22-33;quiz 34 [PMID: 9881538]
- 23 **Lecrubier Y**, Sheehan D, Weiller E, Amorim P, Bonora I, Sheehan KH, Janavs J, Dunbar G. The Mini International Neuropsychiatric Interview (MINI). A short diagnostic structured interview: reliability and validity according to the CIDI. *Eur psychiatr* 1997; **12**: 224-231 [DOI: 10.1016/S0924-9338(97)83296-8]
- 24 **Lempérière T**, Lépine JP, Rouillon F, Hardy P, Ades J, Luaute JP, Ferrand I. [Comparison of various tools for evaluating depression apropos of a study on Athymil 30 mg]. *Ann Med Psychol (Paris)* 1984; **142**: 1206-1214 [PMID: 6398975]
- 25 **Hamilton M**. A rating scale for depression. *J Neurol Neurosurg Psychiatry* 1960; **23**: 56-62 [PMID: 14399272 DOI: 10.1136/jnnp.23.1.56]
- 26 **Hamilton M**. The assessment of anxiety states by rating. *Br J Med Psychol* 1959; **32**: 50-55 [PMID: 13638508 DOI: 10.1111/j.2044-8341.1959.tb00467.x]
- 27 **Harris PA**, Taylor R, Thielke R, Payne J, Gonzalez N, Conde JG. Research electronic data capture (REDCap)--a metadata-driven methodology and workflow process for providing translational research informatics support. *J Biomed Inform* 2009; **42**: 377-381 [PMID: 18929686 DOI: 10.1016/j.jbi.2008.08.010]
- 28 **Buc E**, Dubois D, Sauvanet P, Raisch J, Delmas J, Darfeuille-Michaud A, Pezet D, Bonnet R. High prevalence of mucosa-associated *E. coli* producing cyclomodulin and genotoxin in colon cancer. *PLoS One* 2013; **8**: e56964 [PMID: 23457644 DOI: 10.1371/journal.pone.0056964]
- 29 **Meynier M**, Baudu E, Rolhion N, Defaye M, Straube M, Daugey V, Modoux M, Wawrzyniak I, Delbac F, Villéger R, Méleine M, Borrás Nogues E, Godfraind C, Barnich N, Ardid D, Poirier P, Sokol H, Chatel JM, Langella P, Livrelli V, Bonnet M, Carvalho FA. AhR/IL-22 pathway as new target for the treatment of post-infectious irritable bowel syndrome symptoms. *Gut Microbes* 2022; **14**: 2022997 [PMID: 35090380 DOI: 10.1080/19490976.2021.2022997]
- 30 **Kroenke CH**, Bennett GG, Fuchs C, Giovannucci E, Kawachi I, Schernhammer E, Holmes MD, Kubzansky LD. Depressive symptoms and prospective incidence of colorectal cancer in women. *Am J Epidemiol* 2005; **162**: 839-848 [PMID: 16207809 DOI: 10.1093/aje/kwi302]
- 31 **Payros D**, Secher T, Boury M, Brehin C, Ménard S, Salvador-Cartier C, Cuevas-Ramos G, Watrin C, Marcq I, Nougayrède JP, Dubois D, Bedu A, Garnier F, Clermont O, Denamur E, Plaisancié P, Theodorou V, Fioramonti J, Olier M, Oswald E. Maternally acquired genotoxic *Escherichia coli* alters offspring's intestinal homeostasis. *Gut Microbes* 2014; **5**: 313-325 [PMID: 24971581 DOI: 10.4161/gmic.28932]
- 32 **Chassaing B**, Srinivasan G, Delgado MA, Young AN, Gewirtz AT, Vijay-Kumar M. Fecal lipocalin 2, a sensitive and broadly dynamic non-invasive biomarker for intestinal inflammation. *PLoS One* 2012; **7**: e44328 [PMID: 22957064 DOI: 10.1371/journal.pone.0044328]
- 33 **Fond GB**, Lagier JC, Honore S, Lancon C, Korchia T, Sunhary De Verville PL, Llorca PM, Auquier P, Guedj E, Boyer L. Microbiota-Orientated Treatments for Major Depression and Schizophrenia. *Nutrients* 2020; **12** [PMID: 32276499 DOI: 10.3390/nu12041024]
- 34 **Chen J**, Byun H, Liu R, Jung IJ, Pu Q, Zhu CY, Tanchoco E, Alavi S, Degnan PH, Ma AT, Roggiani M, Beld J, Goulian M, Hsiao A, Zhu J. A commensal-encoded genotoxin drives restriction of *Vibrio cholerae* colonization and host gut microbiome remodeling. *Proc Natl Acad Sci U S A* 2022; **119**: e2121180119 [PMID: 35254905 DOI: 10.1073/pnas.2121180119]
- 35 **Veziat J**, Poirot K, Chevarin C, Cassagnes L, Sauvanet P, Chassaing B, Robin F, Godfraind C, Barnich N, Pezet D, Pereira B, Gagniere J, Bonnet M. Prognostic value of a combination of innovative factors (gut microbiota, sarcopenia, obesity, metabolic syndrome) to predict surgical/oncologic outcomes following surgery for sporadic colorectal cancer: a prospective cohort study protocol (METABIOTE). *BMJ Open* 2020; **10**: e031472 [PMID: 31915159 DOI: 10.1136/bmjopen-2019-031472]



Published by **Baishideng Publishing Group Inc**  
7041 Koll Center Parkway, Suite 160, Pleasanton, CA 94566, USA  
**Telephone:** +1-925-3991568  
**E-mail:** [office@baishideng.com](mailto:office@baishideng.com)  
**Help Desk:** <https://www.f6publishing.com/helpdesk>  
<https://www.wjgnet.com>

