



**HAL**  
open science

## AuBi platform for biologists and bioinformaticians at UCA Mesocentre

Nadia Goué, David Grimbichler, Pierre Peyret, Antoine Mahul

► **To cite this version:**

Nadia Goué, David Grimbichler, Pierre Peyret, Antoine Mahul. AuBi platform for biologists and bioinformaticians at UCA Mesocentre. JOBIM2018, Jul 2018, Marseille, France. hal-04166992

**HAL Id: hal-04166992**

**<https://uca.hal.science/hal-04166992>**

Submitted on 20 Jul 2023

**HAL** is a multi-disciplinary open access archive for the deposit and dissemination of scientific research documents, whether they are published or not. The documents may come from teaching and research institutions in France or abroad, or from public or private research centers.

L'archive ouverte pluridisciplinaire **HAL**, est destinée au dépôt et à la diffusion de documents scientifiques de niveau recherche, publiés ou non, émanant des établissements d'enseignement et de recherche français ou étrangers, des laboratoires publics ou privés.



Distributed under a Creative Commons Attribution - NonCommercial - ShareAlike 4.0 International License





MÉSOCENTRE

UNIVERSITÉ  
Clermont Auvergne

# AuBi platform for biologists and bioinformaticians at UCA Mesocentre

Nadia Goué<sup>1</sup>, David Grimbichler<sup>1</sup>, Pierre Peyret<sup>2</sup> and Antoine Mahul<sup>1</sup>

<sup>1</sup> Mésocentre Clermont Auvergne, Université Clermont Auvergne, 7 Avenue Blaise Pascal, 63 178 Aubière

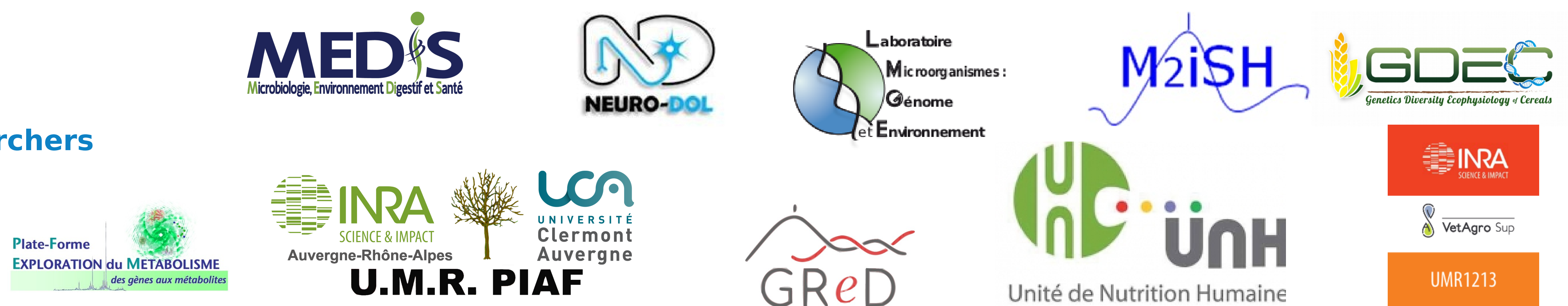
<sup>2</sup> UMR454 MEDIS Microbiologie Environnement Digestif Santé, INRA Site de Theix 63 122 Saint-Genès-Champanelle, CBRV 26 Place Henri Dunant 63 001 Clermont-Ferrand

Hosted by the Mesocentre (mesocentre.uca.fr), AuBi, the Auvergne Bioinformatics platform is a member of the French Institute of Bioinformatics (IFB, www.france-bioinformatique.fr). We aim at sharing expertise and knowledge in large-scale data analysis with computing facilities for several research laboratories.

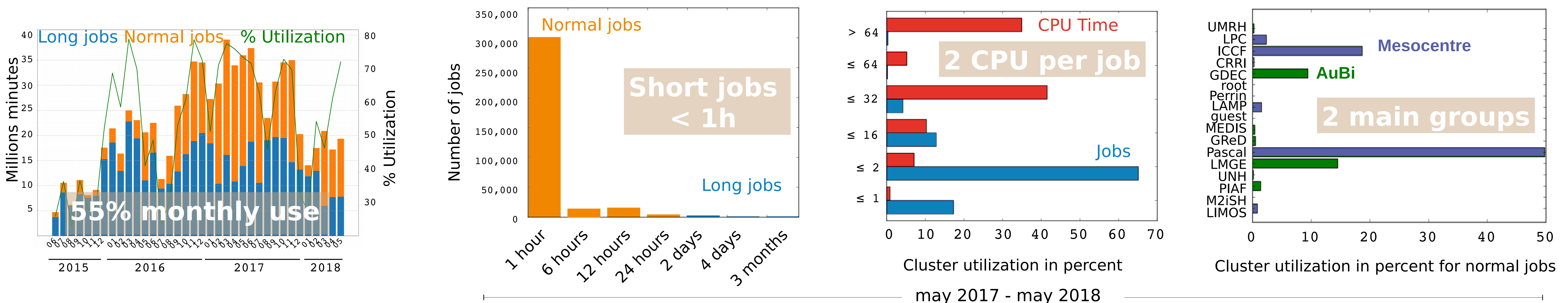
## PUBLIC

PhD students, Engineers & Researchers

182 registered users



## MESOCENTRE METRICS



## MESOCENTRE SERVICES

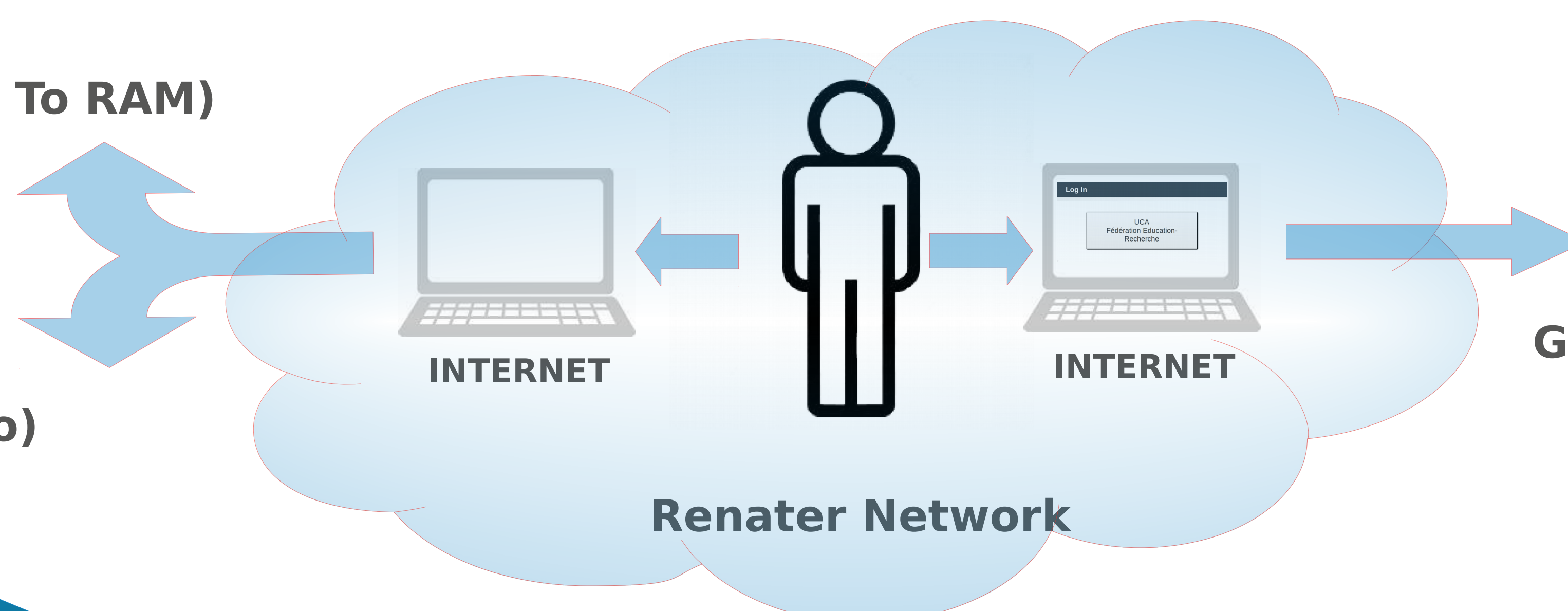
### Computing facilities

HPC (42 nodes, 720 CPU, 6 To RAM)

SMP (768 CPU, 12 To RAM)

### Storage facilities

CEPH (13 nodes, 520 To)



### VMWARE Infrastructures

relational DB, WEB servers,

Galaxy and Omero under development

## AUBI COMMITMENTS

Support computing and storage facilities

Develop and sustain local lab tools

Animate research teams interactions

Panel discussions, thematic conferences, [news.aubi@listes.uca.fr](mailto:news.aubi@listes.uca.fr)

Trainings in 2018

Command line Initiation (3 sessions, 33 users), HPC good practices and QIIME hands-on (1 session, 11 users), Galaxy

Administration (1 session, 8 users)

## CONTACT

AuBi Platform

+33 (0)4 73 40 76 24

[mesocentre@uca.fr](mailto:mesocentre@uca.fr)

## PARTNERS

