



**HAL**  
open science

## Improvement of thermophysical quality of biomass pellets produced from rice husks

Ng Djomdi, H. Fadimatou, B. Hamadou, L.J. Mintsop Nguela, G. Christophe, P. Michaud

### ► To cite this version:

Ng Djomdi, H. Fadimatou, B. Hamadou, L.J. Mintsop Nguela, G. Christophe, et al.. Improvement of thermophysical quality of biomass pellets produced from rice husks. *Energy Conversion and Management*: X, 2021, 12, pp.100132. 10.1016/j.ecmx.2021.100132 . hal-03624368

**HAL Id: hal-03624368**

**<https://uca.hal.science/hal-03624368v1>**

Submitted on 8 Jan 2024

**HAL** is a multi-disciplinary open access archive for the deposit and dissemination of scientific research documents, whether they are published or not. The documents may come from teaching and research institutions in France or abroad, or from public or private research centers.

L'archive ouverte pluridisciplinaire **HAL**, est destinée au dépôt et à la diffusion de documents scientifiques de niveau recherche, publiés ou non, émanant des établissements d'enseignement et de recherche français ou étrangers, des laboratoires publics ou privés.



Distributed under a Creative Commons Attribution - NonCommercial 4.0 International License

1 **Improvement of thermophysical quality of biomass pellets produced from rice husks**

2 **Djomdi<sup>1,\*</sup>, Fadimatou H<sup>1</sup>, Hamadou B.<sup>1,2</sup>, Mintsop Nguela L. J.<sup>1</sup>, Christophe G.<sup>3</sup>,**

3 **Michaud P<sup>3,\*</sup>.**

4 <sup>1</sup> Department of the Renewable Energies, The National Advanced School of Engineering of  
5 Maroua, University of Maroua, P.O. Box: 46, Maroua, Cameroon;

6 <sup>2</sup> Energy Research Laboratory, Renewable Energy Section (LRE/SENC), Institute of  
7 Geological and Mining Research (IRGM), P.o. Box: 4110, Nlongkak Yaounde, Cameroon;

8 <sup>3</sup> CNRS, SIGMA Clermont, Institut Pascal, Université Clermont Auvergne, F-63000  
9 Clermont-Ferrand, France

10 **Email address:**

11 [ngdjomdi@yahoo.fr](mailto:ngdjomdi@yahoo.fr) (Djomdi), [adda\\_fadimatou.@yahoo.fr](mailto:adda_fadimatou@yahoo.fr) (Fadimatou Adda),

12 [minsop@yahoo.fr](mailto:minsop@yahoo.fr) , [hamadou.bakari@yahoo.fr](mailto:hamadou.bakari@yahoo.fr), [Gwendoline.christophe@uca.fr](mailto:Gwendoline.christophe@uca.fr),

13 [philippe.michaud@uca.fr](mailto:philippe.michaud@uca.fr)

14 \* Correspondence: [ngdjomdi@yahoo.fr](mailto:ngdjomdi@yahoo.fr); Tel./Fax: +237 222293112 -

15 [philippe.michaud@uca.fr](mailto:philippe.michaud@uca.fr); Tel./Fax: +33 473407425

16 **To cite this article:**

17 Djomdi et al. Improvement of thermophysical quality of biomass pellets produced from rice  
18 husks.

19 \_\_\_\_\_  
20 **Abstract** This work was initiated to improve the thermophysical quality of biomass pellets  
21 produced from rice husks using arabic gum. Dried and crushed arabic gum was solubilized in  
22 a 1:2, 1:3 and 1:4 m/v binder/water ratios. In addition, the rice husks and pellets were  
23 physiochemically characterized. The formulation of the mixture was carried out by mixing  
24 rice husks of diameter less than or equal to 0.5 mm with arabic gum. It emerges from this  
25 work that the rice husks from the SEMRY (Yagoua Rice Expansion and Modernization

26 Company) from Yagoua in the Far North Region of Cameroon, had 94.736, 17.046, 67.454,  
27 and 15.5% dry matter, ash, organic matter and fixed carbon respectively. Their Lower Heating  
28 Value (LHV) and electrical conductivity were 1178 J/g and 0.756 mS/cm respectively. The  
29 solid biofuel (pellets) obtained show a water content varying between 7.97 and 9.794%. Their  
30 shock resistance, friability index and Lower Heating Value (LHV) depend on the  
31 concentration of the binder used. The thermophysical characteristics of biomass pellets were  
32 proportional to the volume of binder and compaction. The 1:2 binder/water ratio showed the  
33 best thermophysical characteristics.

34

35 **Keywords:** Rice husks, arabic gum, pellet, resistance profile

36

## 37 **1. Introduction**

38 Consumption of fossil fuels worldwide has increased tremendously in last few decades,  
39 which leads to several environmental issues, including greenhouse gas emissions and  
40 deteriorating air quality caused by pollutants such as SO<sub>x</sub>, NO<sub>x</sub> and fine particulate matter.  
41 Moreover, the fluctuation of fossil fuel prices and the depletion of fossil resources have  
42 shadowed the global economy. The production of carbon-neutral and low-emission fuels  
43 from renewable resources, such as biomass, is of growing importance in the gradual  
44 substitution of conventional fossils. For this purpose, cooking energy is essential for all  
45 population around the world. Therefore, the population's access to butane gas, wood,  
46 charcoal or other cooking fuels must be ensured in order to guarantee food, health,  
47 economic and social security in the country [1]. In this international context of tensions over  
48 fossil fuels and awareness of climate risks, interest in renewable energies appears to be an  
49 essential alternative that contributes to meeting the challenges posed by the environment,  
50 climate change or even energy needs without stops more important. It is important to note

51 that most renewable energies are made up of both dispersed resources, more or less  
52 available at all times. In addition, two billion people around the world depend on wood  
53 energy from deforestation for their household energy needs [2]. In Africa more particularly,  
54 this resource represents 89% of energy sources. This recourse to unsustainable wood is a  
55 major cause of deforestation, which poses a serious ecological problem. This deforestation  
56 accentuates drought, desertification as well as climate change.

57 Beyond the fight against poverty, the conservation of biodiversity and the mobilization  
58 against climate change, the exclusive use of wood as a household fuel has many other major  
59 drawbacks [3].

60 However, resources are becoming scarce, it is increasingly difficult for a household to  
61 have access to fossil fuels. Now, Lignocellulosic biomass is an alternative energy resource.  
62 The use of lignocellulosic biomass as an energy source has drawbacks such as high  
63 humidity, high hygroscopicity, low energy density as well as difficulties in handling and  
64 storage. Densification into pellets is one of available strategy to solve these problems.  
65 Essentially, pellets production is mainly based on sawdust from several sources, such as  
66 sawmills, carpentry, and other waste material. Biomass use in form of pellets generates a  
67 biofuel that is more cost-effective than the direct use of non-modified biomass residues for  
68 energy production. In addition, pellet production from non-woody biomass is increasing in  
69 importance. This situation can be alleviated by enhancing the value of plant residues such as  
70 those from harvesting from agriculture like rice husking. Thus, several studies [4, 5, 6]  
71 show that the rice husks obtained from husking can be used as lignocellulosic biomass  
72 capable of serving the production of solid biofuels such as pellets. Moreover, in recent  
73 years, several studies have focused on improving the pellet quality, in particular regarding  
74 durability and bulk density, through the use of organic components, for example, sewage  
75 sludge and inorganic binders. In addition, in the Far North region of Cameroon more

76 precisely in Yagoua, there is a large company (*SEMRY, Yagoua Rice Expansion and*  
77 *Modernization Company*) which produces around 100,000 tonnes of paddy rice and  
78 generates around 20,000 tonnes of rice husks each year [7,8], since about 22 wt% of paddy  
79 is rice husk, which is normally disposed of by open burning. These purely energetic residues  
80 are intended for abandonment and sometimes destroyed [7, 9]. However, they could be used  
81 as an energy source after compaction to give solid biofuel. However, the latter resulting  
82 from compaction poses a problem of friability [10, 11]. This reduces its interest during  
83 transport, handling and storage, in short during its use.

84 Certainly, work has been carried out with the aim of reducing this phenomenon  
85 (friability), in particular when clay is used as a binder [12]. Binders are organic or inorganic  
86 substances that can be added, generally in a lower quantity, to feedstock for pelletization, in  
87 order to improve the mechanical characteristics of the pellet. In addition, binders can reduce  
88 the energy required for palletization. However, lignocellulosic biomass should be converted  
89 to a more hydrophobic, homogenized, energy dense fuel, with better handling characteristics  
90 from its raw conditions [13]. On the other hand, there is no work on the use of arabic gum  
91 as a binder for the production of pellets from rice husks [14, 15]. Therefore, the objective of  
92 this work is to produce solid biofuel from rice husks using gum arabic as a binder in order  
93 to reduce its friability and improve its handling.

94

## 95 **2. Materials and methods**

### 96 ***2.1. Preparation of samples***

97 Rice husks samples of NERICA variety were obtained from SEMRY (Yagoua Rice Expansion  
98 and Modernization Company) from Yagoua in the Far North Region of Cameroon. Rice  
99 husks samples were sorted by screening on metallic sieve in order to retain samples with  
100 diameter  $\leq 0.5$  mm.

101 Arabic gum was harvested, for its quality like binder, from Mindif in the Far North Region of  
102 Cameroon. It was dried and crushed before being sieved to retain samples with diameter  $\leq$   
103 0.5 mm.

104

105

106

107

108



109

110

111 ***Figure 1. Rice husks from SEMRY***

***Figure 2. Arabic gum from Mindif***

## 112 ***2.2. Production of pellets***

113 The crushed arabic gum compound was mixed with water for solubilization. This operation  
114 was done using a defined quantity of gum (50 g) for three volumes of water (100, 150 and  
115 200 mL) according on the work of Ouattara [6]. During this process, three different  
116 formulation intakes were used, notably, 1:2, 1:3 and 1:3 m/v binder/water ratio. After adding  
117 the adequate amount of water using a 250 mL graduated cylinder, the solution was stirred in  
118 order to homogenize it well. The 250 and 500 mL Erlenmeyer flasks were used for mixing  
119 arabic gum with water. For each solution formulated, the time was noted. Following the  
120 preparation of the binder, it was poured into a box which contained 100 g of the rice husk  
121 while mixing to compact into balls. Each time the behavior of the mixture changes, the  
122 amount of binder poured was noted. Thus, for each operation a pellet was obtained and  
123 exposed for sun drying.

## 124 ***2.3. Physicochemical and biochemical analysis***

125 Biochemical and chemical analysis were done according to UICPA method [16] for dry

126 matter, ash and minerals contents; protein, crude fiber, extractible compounds, cellulose,  
127 lignin, hemicellulose and lipid contents was carried out by standard methods of AFNOR [17],  
128 total energy by the method of Edem et al. [18]. LHV and electrical conductivity were  
129 determined by AOAC method [19]. LHV of pellet has been determined as follow: samples  
130 have been wheighed using a precision balanced (*Balance de précision Sartorius Practum*  
131 *224-1S, Paris, France*). This sample is introduced in a bomb calorimeter (*DDS - CAL2K*), the  
132 lid is locked and the initial temperature noted. The reaction is allowed to run to completion  
133 and the calorific value is recorded as seen on the bomb Calorimeter in cal/g. This value is then  
134 converted to J/g for easy calculations from which the lower calorific value is then obtained by  
135 dividing the calorific value by 1.06.

136 Friability index and toughness were determined according to ISO standards [20]. Friability  
137 index test consisted in subjecting 10 pellets to a regular fall force for a given time in order to  
138 to appreciate the loss of mass of these pellets. Toughness or Shock resistance has been  
139 determined by estimating the hardness of a pellets by measuring the intensity of the force that  
140 is diametrically applied to cause its rupture by crushing.

#### 141 **2.4. Combustion tests**

142 Combustion tests were carried out in the laboratory for each sample, in batch condition in a  
143 circular furnace electrically heated at 500°C (PYROX VK65/500) in which, the burning time,  
144 the ash rate and the amount of smoke have been determined. For this purpose, 500 g of pellets  
145 were introduced at  $t_0$  into the preheated oven and after 15 minutes, the combustion process  
146 was stopped.

### 147 **3. Results and discussion**

#### 148 **3.1. Physicochemical characterization**

149 The results from the characterization of the rice husk are presented in the table 1. The dry  
150 matter content was 94.736%. The results obtained show that this variety of rice husk has a

151 same water content compared to that studied by Delot [21] and Akintayo et al. [22], whose  
 152 values were 6.41 and 7.04% respectively. The analysis carried out by Adamon et al. [23]  
 153 showed that the average moisture of the rice husk was 10%. This difference in the data  
 154 obtained may be due to the ambient temperature and the relative humidity of the study areas.  
 155 Water plays both the role of binding agent and lubricant. For forest biomass, humidity  
 156 between 5 and 10% (wet basis) seems to be optimal for obtaining pellets of good durability.  
 157 This range seems to be in general slightly more high for agricultural herbaceous plants,  
 158 between 10 and 20% (wet basis).

159 The ash content obtained was 17.046% compared to that resulting from the work of Adamon  
 160 et al. [23] which was 18.3%. On the other hand, this value is high in view of the one noted by  
 161 Delot [21], which was 13.91%. Delot [21] gave an interval of 17 to 26% of the ash content for  
 162 the rice husk. This difference was explained by the quality of each variety of the rice husk. It  
 163 can also be the cause of the heating temperature to obtain the ash.

164 Results in table 1 show that the organic matter content is very high. At the end of the  
 165 analysis carried out it was 67.454%. Adamon et al. [23] obtained a higher value of 70.6%.  
 166 Work carried out by Edouard [4] showed that it varied from 70 to 80%. Delot [21]  
 167 demonstrated that this value was 83.8%. These inequalities can be related to the dry matter  
 168 content of the rice husks varieties. They can also come from the heating temperature. The  
 169 fixed carbon content was deduced from the organic matter at 15.5%.

170 **Table 1.** *Physicochemical characteristics of rice husks*

<b>Physicochemical parameters</b>	<b>Values</b>
Dry matters (%)	94.736
Ashs (%)	17.046
Oganic matters (%)	67.454



Fixed Carbon (%)	15.5
Extractible matters (%)	16.864
Lignin (%)	25.266
Cellulose (%)	35.466
Hemicellulose (%)	34.667
Particles ratio (%)	61.2
LHV (J/g)	1178
Electrical Conductivity (mS/cm)	0.756

171

172 The average lignin content was 25.266 %. Delot [21] obtained 15.04 % during his studies.  
 173 This difference could be due to the characteristics of the rice varieties used. The  
 174 holocellulose content from this study is very high. Its value is 70.133 %. This shows that the  
 175 rice husk studied consists mainly of a high content of polysaccharide (cellulose and  
 176 hemicellulose).

177 Table 2 show that minerals content varies between 20 ppm (Mn) to 11680 ppm (SiO<sub>2</sub>).  
 178 Cereal husks appear to contain significant amounts of silica. Rice, however, clearly stands out  
 179 from the rest cereals, with a silica composition in its straws more than three times greater  
 180 other cereals. Mn value content is low and it is within the critical level range of 51 to 350  
 181 ppm. The high concentration of silica content of the rice husk is an obstacle to the transfer of  
 182 moisture from the surrounding air to the rice husk. This is an asset for the conditioning of this  
 183 biomass, which is not likely to absorb a significant amount of moisture. These characteristics  
 184 are benefit for pellet production. A fairly large concentration of Mg (690.00 ppm) is also  
 185 found for the rice husk.

186 Low water content and higher mineral content show that rice husks have great hability for

187 its storage. Delot [24] conducted same studies on maximum humidity level that a material  
188 must contain for its storage. This study revealed that to prevent decomposition, humidity level  
189 should not be above 15%.

190

191

*Table 2. Mineral composition of rice husks*

<b>Minerals</b>	<b>Values (ppm)</b>
Fe	67.98
Ca	294.00
Mg	690.00
K	120.25
Na	50.62
Zn	36.19
Al	240.15
Mn	20.00
P	280.00
SiO <sub>2</sub>	11680.00

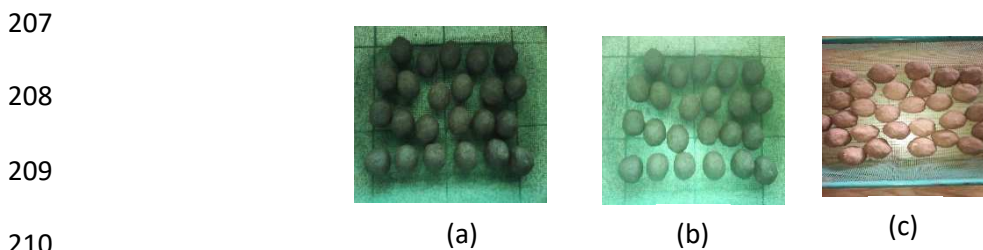
192 Thus, the values obtained meets this criterion. For this purpose, this material can be stored  
193 easily without being exposed to rotting due to its decomposition by microorganisms. This  
194 shows that its supply does not present any risks. This is an asset for its use in the  
195 industrialization of the recovery of plant residues by the production of cooking energy [25,  
196 26].

### 197 *3.2. Pellet formulation and thermophysical characteristics*

198 The pelletization process overcomes certain obstacles posed by biomass; it is thus more and  
199 more commonly put in works as a pre-treatment step for the production of energy from  
200 biomass, because it has several advantages among which the densification and standardization

201 of the geometry of the fuel [27, 28]. By bringing biomass particles into close contact with the  
202 binder, this process appears to elsewhere well suited to implement potential interactions  
203 between biomass particles during the reactions that take place during combustion. It is why  
204 the pellet form was chosen as material conditioning first [29].

205 The binder mixed with the rice husks gave 3 types of pellets (Fig. 3) which were  
206 characterized (Tab 3).



211 **Figure 3.** Pellets produced (a) from the 1:2 ratio ; (b) from 1:3 ratio and (c) from 1:4 ratio

212 Pellets of  $20 \pm 5$  cm were obtained with color depending on the amount of water and binder  
213 ratio. The more the binder was poured, the darker the color of the pellets obtained was leading  
214 to the conclusion that arabic gum has a coloring character. Figure 3 shows the different colors  
215 depending on the volume of the binder in relation to the amount of water. This difference was  
216 also observed in the drying time for an average temperature of  $33^{\circ}\text{C}$  which varied from 3 to 7  
217 days depending on the type of pellets. This drying time is influenced by the rice husk/binder  
218 ratio.

219 The water content of the pellets produced from a 1:2 water ratio was low. The studies carried  
220 out show that its average water content was 7.97%. The average water content of pellets made  
221 from 1:3 water ratio was higher than those compacted from 1:2 ratio. Its average value was  
222 8.88%. For 1:4 this value was 9.94%.

223 It emerges from the analysis that water content is proportional to the volume of water used  
224 for the formulation [30]. This can be explained by the fact that the rigidity that the binder  
225 confers to these solid biofuels does not allow the light rays to be able to dry the pellets well

226 [31]. This is justified by the hydrophilic nature of arabic gum [32].

227

228

*Table 3. Thermophysical characteristics of pellets*

<b>Water ratio</b>	<b>Water content (%)</b>	<b>Shock resistance (mPa)</b>	<b>Friability Index</b>	<b>LHV (J/g)</b>
1:2	$7.97 \pm 0.31^a$	$199.977 \pm 2.523^b$	$0.44 \pm 0.021^a$	$1879 \pm 12.056^b$
1:3	$8.88 \pm 0.47^b$	$189.988 \pm 3.739^a$	$0.63 \pm 0.052^b$	$1741 \pm 22.845^a$
1:4	$9.94 \pm 1.08^{bc}$	$187.994 \pm 5.186^a$	$0.59 \pm 0.042^b$	$1763 \pm 18.743^a$

229 The results having the same letters in exponent on the same column are not significantly different (probability threshold  $P \leq 0.05$ )

230 It appears from Figure 3 and Table 3 that the textural profile and thermophysical  
231 characteristics of the pellets varied according to the type of treatment. Water ratio  
232 significantly influence ( $p < 0.05$ ) water content which is  $7.97 \pm 0.31$ ,  $8.88 \pm 0.47$  and  $9.94 \pm$   
233  $1.08$  % respectively for 1:2, 1:3 and 1:4 water ratios. These treatments also had significant  
234 effects on the shock resistance, friability index and LHV ( $p < 0.01\%$ ) between 1:2 water ratio  
235 and others. As regards the ANOVA ( $p < 0.05$ ), there is no significant difference ( $p < 0.05$ )  
236 between 1:3 and 1:4 water ratio, but a significant difference with 1:2. It can be seen from the  
237 table 3 that the friability index of the different pellets varies according to their moisture  
238 content which is linked to their ratio. It is clear that the friability index increases as the  
239 humidity level increases. This is because the water enhances the effects of the binding agent  
240 by helping to generate the Van der Waals forces by increasing the surface area of the particles  
241 [33]. These results are in agreement with those of Pereira et al. [34], who state that water  
242 plays a binding role in the compaction of wood debris during the production of pellets.

243 In short, it emerges from these results that the shock resistance, friability and LHV of a  
244 pellet depends on the amount or concentration of the binder used in its manufacture (water  
245 quantities) [35]. Thus, the more this solid biofuel is produced with a high volume of water and

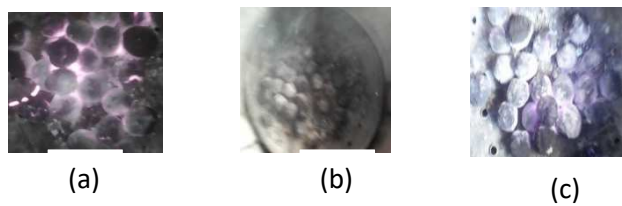
246 low amount of binder, the less resistance shock and LHV will be. These thermophysical  
247 characteristics of a pellet are therefore proportional to the concentration of the binder and of  
248 its compaction. This shows that the pellets produced can be used easily without crumbling  
249 like reported by Racicot [12]. This character has environmental, economic and socio-cultural  
250 impacts.

251 The water content of the pellet produced from a 1:2 water ratio was low. The studies carried  
252 out show that its average water content was 7.97%. The average water content of pellets made  
253 from 1:3 water ratio was higher than those that were compacted from 1:2 ratio. Its average  
254 value was 8.88%. For 1:4 this value was 9.94%.

255 It emerges from the analysis that the water content is proportional to the volume of water  
256 used for the formulation like demonstrated by Patrick [36]. This can be explained by the fact  
257 that the rigidity that the binder confers on these pellets did not allow the light rays to be able  
258 to dry the pellets well. This justifies the hydrophilic nature of arabic gum [37, 38]. A  
259 compromise should be found between the amount of water to be used and the mass of organic  
260 binder to maintain the integrity of the pellet. The 1:2 ratio seems to go in this direction, which  
261 is in accordance with the work of Kaliyan and Vance Morey [39].

### 262 ***3.3. Combustion tests***

263  
264 In order to appreciate the different types of pellets produced at different water ratios,  
265 combustion tests were carried out. Ignition of pellets made with 1:2 water ratio was easy and  
266 solid biofuel ignite easily. The figure 4 shows the quality of the embers that burn without the  
267 release of smoke. However, analysis performed show that ignition was difficult for the 1:3  
268 water ratio pellet. Pellets have a hard time burning. It emitted fumes. It is the same for the  
269 pellets obtained from 1:4 water ratio. They found it difficult to burn. Excessive smoke was  
270 given off.



272 **Figure 4.** Combustion tests of pellets produced (a) from the 1:2 ratio ; (b) from 1:3 ratio and  
 273 (c) from 1:4 ratio

274 During combustion tests, only the pellets from 1:2 ratio burned were well. After 30 minutes  
 275 of ignition, the embers were deactivated; during this test, it was noted that the charcoal  
 276 produced can be reused. This is not the case when using clay as a binder [23]. Some authors  
 277 have shown that the high concentration of minerals in clay has a negative impact on the  
 278 combustion of biofuel [40, 41]. The rice husk being rich in SiO<sub>2</sub> with regard to Table 2 of the  
 279 present work, the addition of clay as a binder seems inappropriate for a quality pellet [42, 43].  
 280 It is therefore obvious that the use of organic binders have better yields.

281 The combustion test reveals that the excess of water in the final product has a negative  
 282 impact on its subsequent use and the nature of the binder seems to play a determining role  
 283 [44, 45, 46].

#### 284 **4. Conclusion**

285 During the study focused on the resolution of cooking energy deficits that are present in  
 286 areas with fragile ecology where anarchic cutting of trees for firewood was carried out, the  
 287 share of biomass to the satisfaction of this livelihood need of the population was addressed.  
 288 This work consisted of contributing to the improvement of the quality of the solid biofuel  
 289 produced from the husks of the SEMRY rice by using arabic gum from the natural formations  
 290 of Mindif in the Far-North region of Cameroon. The physicochemical analyzes carried out  
 291 showed that the rice husk from the SEMRY rice NERICA variety consisted of dry matter  
 292 content (94.736%). The average lignin content was 25.266 % and holocellulose one was

293 70.133 % showing that the rice husk studied is mainly composed of polysaccharides. It  
294 emerges from this work that minerals content varied between 20 ppm (Mn) to 11680 ppm  
295 (SiO<sub>2</sub>). Mn value content was low and it was within the critical level range of 51 to 350 ppm.  
296 The high silica content of the rice husk was an obstacle to the transfer of moisture from the  
297 surrounding air to the rice husk. This is an asset for the conditioning of this biomass, which is  
298 not likely to absorb a significant amount of moisture. These characteristics were therefor  
299 benefit for pellet production.

300 These results showed that the shock resistance, friability and LHV of a pellet depend on the  
301 amount or concentration of the binder used in its manufacture (water quantities). Pellets made  
302 from rice husks are a source of energy. Its optimal use requires densification, which can be  
303 done by means of binders. However, because of its high SiO<sub>2</sub> content, organics binder such as  
304 gum arabic which is underutilized offer a better potential for the production of solid biofuels  
305 for the poor population.

306 This shows that the pellets produced can be used easily without crumbling. This character  
307 has environmental, economic and socio-cultural impacts.

308

309 **Author Contributions:** Conceptualization, D. and H.B.; methodology, D. and H.B.; software,  
310 G.C.; validation, D. and M.P.; formal analysis, D. F.A.; Investigation, F.A. and M.N.L.J.;  
311 resources, D. and C.G.; data curation, M.N.L.J.; writing—original draft preparation, D. and  
312 H.B.; writing—review and editing, D. and G.C.; supervision, M.P. and G.C.; project  
313 administration, D. and M.P.; funding acquisition, D. All authors have read and agreed to the  
314 published version of the manuscript.

315

### 316 **Acknowledgements**

317 This work was carried out with the help of the Center for International Cooperation in

318 Agronomic Research for Development (CIRAD) in Montpellier/France and the Inter-  
319 establishment Agency for Research for Development (AIRD).

320

321 **Funding:** This research did not receive any specific grant from funding agencies in the  
322 public, commercial, or not-for-profit sectors.

323

---

## 324 **References**

325 [1] Abanades, S., Abbaspour, H., Ahmadi, A. et al. (2021). A critical review of biogas  
326 production and usage with legislations framework across the globe. *Int. J. Environ. Sci.*  
327 *Technol.* (2021). <https://doi.org/10.1007/s13762-021-03301-6>.

328 [2] Singh, Vijay P, Yadav, Shalini, Yadava, Ram Narayan (2016). *Climate Change Impacts.*  
329 *Proceedings of the International Conference on Water, Environment, Energy and Society.*  
330 Springer Nature Singapore Pte Ltd.

331 [3] Yacouba. A. S, Moussa. O. Z, Kadri. A, Kaka. S, Ibroh. G. (2013). Participatory varietal  
332 selection: an approach used for the selection of lowland NERICA varieties in Niger. *Int.*  
333 *J. Biol. Chem. Sci.* 2013. P 2202-2013.

334 [4] Edouard. H. (2013). Valorisation des cendres de balles de riz pour la production de  
335 matériaux pouzzolaniques à Madagascar. Travail de fin d'études réalisé en vue de  
336 l'obtention du grade de Master Ingénieur en Civil des Constructions. Faculté des Sciences  
337 Appliquées à l'Université de Liège. 2013. P16.

338 [5] Delot. P. (2014a). *Eau et vapeur.* 2014. P7.

339 [6] Ouattara. B. (2015). Etuvage du riz à Gaya au Niger : Utilisation des briquettes de balles  
340 de riz comme combustible. *Vredeseilanden west africa (VECO-WA).* 2015. P4..

341 [7] Yebga. P. (2017). Diagnostic et proposition de solutions d'amélioration des performances  
342 d'un périmètre rizicole : cas de la SEMRY à Yagoua et à Maga - république du



- 343 Cameroun. Memoire pour l'obtention du Master II en Génie Civil et Hydraulique,  
344 spécialité : Infrastructures et Réseaux Hydrauliques (Eau Agricole), 2iE. 2017 p 6-12..
- 345 [8] Mbodiam, B. R. (2017). Avec une production de 300 tonnes par an, la marque  
346 camerounaise « logone riz » tente une percée sur les marchés local et tchadien. Business  
347 in plan.2017. P197.
- 348 [9] Thierry. G. (2017). Densification et analyse des propriétés physiques de biocharbon  
349 produit à partir des coques déchets d'anacarde au Bénin. Journal international de  
350 l'innovation et des études appliqués. ISSN 2028-9324 Vol. 19 No. Département de  
351 Génie Industriel et Mécanique, Institut Universitaire de Technologie de Lokossa, B.P.  
352 133, Lokossa, Bénin. Laboratoire d'Energétique et de Mécanique Appliquée (LEMA),  
353 EPAC, Abomey-Calavi, Benin. 3 Feb. 2017, pp. 617-618..
- 354 [10] Guy F. R. (2010). Lutter contre les changements climatiques et augmenter la productivité  
355 agricole avec le charbon vert. Membre de l'UICN, Union Internationale pour la  
356 Conservation de la Nature. 2010.P1.
- 357 [11] Koala. L. (2012). Fabrication manuelle de briquettes de balles de riz et evaluation des  
358 performances du foyer amélioré à balles de riz. Mémoire de fin de cycle option eaux et  
359 forêts à l'institut du développement rural à l'Université de BOBO-DIOULASSO à  
360 BURKINA FASO. 2012. P18, 22-24.
- 361 [12] Racicot. A. (2011). Durabilité de combustibles de substitution au bois énergie en Haïti –  
362 filières renouvelables pour la cuisson des aliments. Présenté au Centre Universitaire de  
363 Formation en Environnement en vue de l'obtention du grade de maître en environnement  
364 (M. Env.). Centre universitaire de formation en environnement. Université de  
365 Sherbrooke. 2011. P2, 33,34.
- 366 [13] Mouton. (1974). Les liants organiques utilisés en génie civil. 1974. P13.
- 367 [14] Oumarou. P. M. (2011). Déterminants socioéconomiques de la gestion paysanne des

368 plantations d'acacia Sénégal et de la production de la gomme arabique au Nord  
369 Cameroun. Thèse en vue d'obtention de Doctorat de l'université Toulouse en études  
370 rurales de gestion. 2011. P14.

371 [15] Saidou. C. (2013). Propriétés physico-chimiques et fonctionnelles des gommés  
372 hydrocolloïdes des écorces de *Triumfetta cordifolia* et *Bridelia thermifolia*. Thèse pour  
373 obtenir le grade de Docteur de l'Université de Grenoble, spécialité : Mécanique des  
374 Fluides, Procédés, Energétique Et de Docteur de l'université de Ngaoundéré, Spécialité :  
375 Sciences Alimentaires Nutrition / Physico-Chimie Alimentaire. 2013. P12-23.

376 [16] UIPAC (Union Internationale de Chimie Pure et Appliquée) (1979). Méthodes d'analyse  
377 des matières grasses et dérivés ; ETIG, Paris - France sixième édition ; 238 p.

378 [17] AFNOR, (2002). Recueil des normes françaises. Produit dérivé des fruits et légumes.  
379 AFNOR, Paris (France), 260 p.

380 [18] Edem, D.OEkwere ., E.S. and Eke O.U. (1994). Chemical evaluation of the effect of  
381 cooking on the nutritive value Conophor seed (*Tetraploidium conophor*). Trop. Sci., 34:  
382 377-380.

383 [19] AOAC (2000). Official methods of analysis of the Association of Official Analytical  
384 Chemists. Washington, DC.

385 [20] ISO 8256:2004 (2017). Plastics — Determination of tensile-impact strength, standard,  
386 reviewed and confirmed in 2017, version remains current.

387 [21] Delot. P. (2015). Composition physico chimique. 26 mars 2015 P7.

388 [22] Akintayo . I, B. Cissé et L. D. Zadjil.,(2008). Guide pratique de la culture des NERICA de  
389 plateau 2008. Cotonou, Bénin.Centre du riz pour l'Afrique (ADRAO). 2008. P36.

390 [23] Adamon. D. G. F., Latif. F., Ammar. B., Sanya. E. (2015). Détermination des paramètres  
391 cinétiques globaux de la conversion de biocharbon. 2015. P7

392 [24] Delot. P. (2014b). *Réaction au feu. Novembre 2014*. P8.

- 393 [25] ADEME. (2008). Etude biomasse agricole et lèretransformation en région PACA.  
394 Groupe de travail régional sécurité énergétique – 07 octobre 2008. P4.
- 395 [26] ADEME. (2017). Définition et exigences. Rapport Référentiels combustibles bois énergie  
396 de l’ADEME. 2017. P36.
- 397 [27] Pastre, O. (2019). Analysis of the Technical Obstacles Related to the Production and  
398 Utilisation of Fuel Pellets Made from Agricultural Residues. Available online:  
399 <http://www.Pelletcentre.Info/Resources/1093.Pdf> (accessed on 9 November 2019).
- 400 [28] Zvicevicius, E.; Raila, A.; Ciplien , A.; ` Cerniauskien , Z.; Kadziuliene, Z.; Tilvikien, V.  
401 E. (2018). ffects of moisture and pressure on densification process of raw material from  
402 Artemisia dubia Wall. Renew. Energy 2018, 119, 185–192. [CrossRef].
- 403 [29] Whittaker, C.; Shield, I. (2017). Factors affecting wood, energy grass and straw pellet  
404 durability—A review. Renew. Sustain. Energy Rev. 2017, 71, 1–11. [CrossRef].
- 405 [30] Imaël. H. N. B, Boukaré. B, Stefano .M, Alexandre. S, Bahoude.T, Boubakar. T. (2013).  
406 Amélioration de la qualité du riz, cahier n°1, guide de transformation Burkina Fasso.  
407 Juillet 2013.P 4-19.
- 408 [31] Patrick .O. (2008). Rapport de consultation pour la conception des supports visuels de  
409 vulgarisation des normes et qualités de la gomme arabique. Novembre 2008.P4.
- 410 [32] Hamadi. K. (2012). Approvisionnement durable des zones rurales en bois et techniques  
411 de production efficace de bio-charbon dans le Sahel. Forum Régional de la CEDEAO sur  
412 la Bioénergie à Bamako, Mali (19 – 22). Mars 2012. P16-17.
- 413 [33] Sommersacher P, Brunner T, Obernberger I. (2012). Fuel Indexes: A Novel Method for  
414 the Evaluation of Relevant Combustion Properties of New Biomass Fuels. Energy &  
415 Fuels 2012;26:380–90. doi:10.1021/ef201282y.
- 416 [34] Pereira S. C., Maehara L., Machado C. M. M., Farinas C. S. (2015). Biotechnol. Biofuels  
417 8(1) 44.

- 418 [35] Poda. D. (2009). Manuel pratique de production durable des gommés au Burkina Faso.  
419 2009. P4-14,39.
- 420 [36] Patrick. D. E. M. (2007). Etude de faisabilité d'une unité de production de charbon vert.  
421 Projet de fin d'études en vue de l'obtention du diplôme d'ingénieur de conception. Dans le  
422 département génie électromécanique au centre de Thiès à l'école supérieure  
423 polytechnique de l'université cheikh anta diop de Dakar. 2007. P1, 31.
- 424 [37] Hall. D.O, Rosillo-Calle . F, Williams. R.H, Woods. J.X. (1993). Biomass energy supply  
425 and prospects. In Renewable Energy: Sources for Fuel and Electricity, Johansson TB,  
426 Kelly H, Reddy AKN, Williams RH. (eds). Island Press, Washington. 1993. P593–651.
- 427 [38] Zawi'slak, K.; Sobczak, P.; Kraszkiwicz, A.; Niedziółka, I.; Parafiniuk, S.; Kuna-  
428 Broniowska, I.; Tana's, W.; Zukiewicz-Sobczak, W.; Obidzi 'nski, S. (2020). The use of  
429 lignocellulosic waste in the production of pellets for energy ' purposes. Renew. Energy  
430 2020, 145, 997–1003. [CrossRef]
- 431 [39] Artemio, C.P.; Maginot, N.H.; Serafin, C.U.; Rahim, F.P.; Guadalupe, R.Q.J.; Fermín,  
432 C.M. 2018). Physical, mechanical and energy characterization of wood pellets obtained  
433 from three common tropical species. PeerJ 2018, 2018, 1–16. [CrossRef] [PubMed]
- 434 [40] Bados, R.; Esteban, L.S.; Pérez, P.; Mediavilla, I.; Fernández, M.J.; Barro, R.; Corredor,  
435 R.; Carrasco, J.E. (2017). Study of the production of pelletized biofuels from  
436 Mediterranean scrub biomass. In Proceedings of the European Biomass Conference and  
437 Exhibition, Stockholm Sweden, 12–15 June 2017.
- 438 [41] Vinod V.T.P., Sashidhar R.B., Suresh K. I., Rama Rao B., Vijaya Saradhi U.VR. et  
439 Prabhakar Rao T. (2008). Morphological, physico-chemical and structural  
440 characterization of gum kondagoku (*Cochlospermum gossypium*): A tree gum from India.  
441 Food Hydrocolloids. 2008. P 22, 899-915.
- 442 [42] Gehrig, M.; Wöhler, M.; Pelz, S.; Steinbrink, J.; Thorwarth, H. Kaolin as additive in

- 443 wood pellet combustion with several mixtures of spruce and short-rotation-coppice  
444 willow and its influence on emissions and ashes. *Fuel* 2019, 235, 610–616. [CrossRef]
- 445 [43] García, R.; González-Vázquez, M.P.; Martín, A.J.; Pevida, C.; Rubiera, F. Pelletization of  
446 torrefied biomass with solid and liquid bio-additives. *Renew. Energy* 2020, 151, 175–183.  
447 [CrossRef]
- 448 [44] Kaliyan N, Vance Morey R. (2009). Factors affecting strength and durability of densified  
449 biomass products. *Biomass and Bioenergy* 2009;33:337–59.  
450 doi:10.1016/j.biombioe.2008.08.005.
- 451 [45] Vassilev S V., Baxter D, Vassileva CG. An overview of the behaviour of biomass during  
452 combustion: Part II. Ash fusion and ash formation mechanisms of biomass types. *Fuel*  
453 2014;117:152–83. doi:10.1016/j.fuel.2013.09.024.
- 454 [46] Vassilev S V., Baxter D, Vassileva CG. An overview of the behaviour of biomass during  
455 combustion: Part I. Phase-mineral transformations of organic and inorganic matter. *Fuel*  
456 2013;112:391–449. doi:10.1016/j.fuel.2013.05.043.