



**HAL**  
open science

**Reply to comment on “Metamorphic origin of anastomosing and wavy laminas overprinting putative microbial deposits from the 3.22 Ga Moodies Group (Barberton Greenstone Belt)”**

Masafumi Saitoh, Nicolas Olivier, Marion Garçon, Maud Boyet, Christophe Thomazo, Julien Alleon, Jean-François Moyen, Vincent Motto-Ros, Johanna Marin-Carbone

► **To cite this version:**

Masafumi Saitoh, Nicolas Olivier, Marion Garçon, Maud Boyet, Christophe Thomazo, et al.. Reply to comment on “Metamorphic origin of anastomosing and wavy laminas overprinting putative microbial deposits from the 3.22 Ga Moodies Group (Barberton Greenstone Belt)”. *Precambrian Research*, 2022, 373, pp.106624. 10.1016/j.precamres.2022.106624 . hal-03607653

**HAL Id: hal-03607653**

**<https://uca.hal.science/hal-03607653v1>**

Submitted on 14 Mar 2022

**HAL** is a multi-disciplinary open access archive for the deposit and dissemination of scientific research documents, whether they are published or not. The documents may come from teaching and research institutions in France or abroad, or from public or private research centers.

L'archive ouverte pluridisciplinaire **HAL**, est destinée au dépôt et à la diffusion de documents scientifiques de niveau recherche, publiés ou non, émanant des établissements d'enseignement et de recherche français ou étrangers, des laboratoires publics ou privés.

1 **Reply to comment on “Metamorphic origin of anastomosing and wavy laminas overprinting**  
2 **putative microbial deposits from the 3.22 Ga Moodies Group (Barberton Greenstone Belt)”**

3  
4 Masafumi Saitoh<sup>1,\*</sup>, Nicolas Olivier<sup>2</sup>, Marion Garçon<sup>2</sup>, Maud Boyet<sup>2</sup>, Christophe Thomazo<sup>3,4</sup>, Julien  
5 Alleon<sup>5</sup>, Jean-François Moyen<sup>6</sup>, Vincent Motto-Ros<sup>7</sup>, and Johanna Marin-Carbonne<sup>5</sup>

6  
7 1. School of Geosciences and Civil Engineering, Kanazawa University, Kakuma, Kanazawa 920-1192  
8 Japan

9 2. Université Clermont Auvergne, CNRS, IRD, Laboratoire Magmas et Volcans, F-63000 Clermont-  
10 Ferrand, France

11 3. Laboratoire Biogéosciences, Université Bourgogne Franche-Comté, Dijon, France

12 4. Institut Universitaire de France, 1 rue Descartes, 75231 Paris CEDEX 05, France

13 5. Institut des Sciences de la Terre, Faculté des géosciences et de l'environnement, Université de  
14 Lausanne, 1015 Lausanne, Switzerland

15 6. Univ Lyon, UJM, UCBL, ENSL, CNRS, LGL-TPE, 23 rue Dr. Paul Michelon, F-42023, Saint  
16 Etienne, France

17 7. Université Lyon, Université Claude Bernard Lyon 1, CNRS, Institut Lumière Matière, UMR 5306,  
18 F-69622, Villeurbanne, France

19  
20 \*Correspondence: msaitoh@se.kanazawa-u.ac.jp; Tel.: +81-76-264-6515

21  
22 Anastomosing and wavy laminae are frequently observed in the ~3.22 Ga Moodies Group in the  
23 Barberton Greenstone Belt (BGB) (e.g., Heubeck, 2009; Homann et al., 2015). These laminae in  
24 sandstones accumulated in marine-terrestrial transitional environments have been extensively  
25 interpreted to be remnants of original microbial mats based, for instance, on lamina morphology and  
26 isotopic signals using outcrop samples from various localities in the BGB (e.g., Noffke et al., 2006;  
27 Heubeck, 2009; Homann et al., 2015; Homann et al., 2018; Thomazo et al., 2020). However, the  
28 influence of post-depositional processes on the lamina formation and preservation has received limited  
29 attention in previous studies. In order to bring further insights on the post-depositional history of the  
30 analyzed Moodies sandstones in light of the suggested biogenic origin of laminae, Saitoh et al. (2021)  
31 conducted detailed petrological observation and multiple geochemical analyses on samples collected  
32 from the Saddleback Syncline in the central BGB. Based on those results, Saitoh et al. (2021) illustrated  
33 important post-depositional processes and their substantial role in the lamina formation and  
34 modification. Saitoh et al. (2021) emphasized that their observations did not exclude the possibility that  
35 some of the analyzed Moodies laminae were originally microbial mats. Furthermore, conclusions of  
36 this work were based solely on the analyzed sandstones collected from one outcrop from the Saddleback  
37 Syncline. Nonetheless, Homann and Heubeck (2021) contested the significance of these outcomes in

38 providing further insights into the origin of Moodies anastomosing and wavy laminae.

39 The origins of the Moodies laminae and of carbonaceous material (CM) within these laminae  
40 should be separated clearly to discuss their biogenicity. The comments by Homann and Heubeck (2021)  
41 were based, at least in part, on misunderstanding on this point. For example, Homann and Heubeck  
42 (2021) used the term “carbonaceous laminae/laminations” repeatedly on their comments to impress  
43 their biogenicity on a reader. It is obvious that some of the Moodies laminae at other localities analyzed  
44 in previous studies are “carbonaceous” (e.g., Homann et al., 2018). However, almost all the laminae in  
45 the Saddleback sandstones analyzed in Saitoh et al. (2021) are not suitable to be described as  
46 “carbonaceous”, because CM is only rarely observed within the laminae as clearly shown by the Raman  
47 analyses. The scarcity of CM is underpinned by both the low total organic carbon (TOC) contents  
48 measured in three samples ( $< 108$  ppm; mean TOC =  $90 \pm 31$  (2SD,  $n=3$ ) ppm) and the low loss of  
49 ignition (LOI) measured in twenty-nine samples from all subunits (LOI  $< 2.5$  wt.%; mean LOI =  $1.1$   
50  $\pm 1.0$  (2SD,  $n=29$ ) wt.%) (Saitoh et al., 2021). As a matter of comparison, the TOC contents of banded  
51 cherts are up to 2.2 wt.% in the older Hooggenoeg Formation and  $\sim 0.2$  wt.% in the Buck Reef Chert  
52 (e.g., Hofmann and Bolhar, 2007; Hofmann et al., 2013). In addition to the CM scarcity observed in the  
53 Moodies sandstones (Saitoh et al. 2021), multiple lines of evidence demonstrate that substantial  
54 secondary overprints, such as sericite and Ti-oxide occurrences, are commonly observed in the laminae  
55 through the analyzed succession. Based on these observations, Saitoh et al. (2021) concluded that the  
56 observed laminae, at the hand-specimen scale, in the analyzed rocks were features of the secondary  
57 overprints of later metamorphic processes (i.e., abiotically; also see Bower, 2011).

58 It is worth noting that the results in Saitoh et al. (2021) do not exclude – but do not support either  
59 – the possibility that precursors of some of the analyzed laminae were microbial mats. Indeed, the  
60 analyzed sericite-rich laminae contain finer clastic grains compared to the underlying and overlying  
61 coarser sediments; such textures suggest that they are an original sedimentary bedding. The rare CM  
62 observed within the laminae could have been a remnant of original microbial mats, although there is no  
63 evidence to exclude other possible sources (e.g., detrital organic matter) (Saitoh et al., 2021). In short,  
64 the petrological indices of biogenicity of the laminae are meager in the analyzed samples because they  
65 have been too modified to deliver strong, reproducible, and obvious original information. Therefore,  
66 the conclusion of Saitoh et al. (2021) is fully in line with recent publications aiming to illustrate and  
67 understand the complexity and potential heterogeneity of post-depositional processes on the Moodies  
68 sediments (Reimann et al., 2021; Janse van Rensburg et al., 2021). The degree of alteration in the  
69 Moodies group has been recently demonstrated to be highly heterogeneous and variable on a regional  
70 scale (Reimann et al., 2021), particularly in association with the density of diabase dyke network in the  
71 Saddleback Syncline (Fig. 1). In that sense, Saitoh et al. (2021) emphasized again that their conclusions  
72 were based solely on the analyzed sandstones from one outcrop of the Saddleback Syncline and should  
73 not be expanded to the entire Moodies Group.

74 Secondary Ti oxides and sericite cements are consistently dominant in anastomosing and wavy  
75 laminae through the analyzed succession (Saitoh et al., 2021). Moreover, the multiple sulfur isotopic  
76 composition of sandstones is relatively homogeneous through the analyzed Saddleback succession  
77 (Saitoh et al., 2020), and very similar to the isotopic composition of metasomatic sulfides from nearby  
78 gold mines in the central BGB (Agangi et al., 2016), suggesting that the secondary addition of  
79 hydrothermal, sulfur bearing-fluids also participated in the geological history of the Moodies Group in  
80 the Saddleback Syncline. The mineralogical and geochemical homogeneity of the analyzed sandstones  
81 (Saitoh et al., 2020, 2021) suggests that a regional post-depositional process has affected the Moodies  
82 sedimentary rocks around the studied section. Bearing this in mind, our conclusion was built on the  
83 description of rocks from the same locality – i.e., Log 9 – of Homann et al. (2015). Our field work was  
84 guided by a sedimentological approach and the completion of a sampling log. We were able to reproduce  
85 the facies succession described in Log 9 of Homann et al. (2015) and the samples were collected based  
86 on this lithofacies correspondence (see Figs. 1 and 2 and Table 2 of Saitoh et al., 2021). We disagree  
87 with Homann and Heubeck (2021)’s claim that our samples were “selectively investigated, and  
88 interpreted with scant consideration of their geological context”. Our study site was selected following  
89 personal communication with M. Homann and C. Heubeck and also according to the “Geology of the  
90 Barberton Greenstone Belt: Processes on the early Earth” excursion field guide of Heubeck et al. (2016).  
91 Although Homann et al. (2015) did not report precise sample positions along their logs, Fig. 1 shows  
92 that our samples are from the same locality in the Saddleback Syncline as in Homann et al. (2015).  
93 Similar lithology of the analyzed rocks from the same locality with the same geological context in  
94 Homann et al. (2015) and in Saitoh et al. (2021) indicates clearly that we did not use the least promising  
95 samples (in terms of putative biogenicity) as suggested by Homann and Heubeck (2021). Nevertheless,  
96 we also note that such “least promising” rocks should not be overlooked in general, because Archean  
97 altered rocks record complex post-depositional histories in various regional contexts and are useful to  
98 avoid leading a wrong perspective on early (and possibly extraterrestrial) life.

99

## 100 **References**

101

102 Agangi, A., Hofmann, A., Eickmann, B., Marin-Carbonne, J., Reddy, S.M., 2016. An atmospheric  
103 source of S in Mesoarchaeon structurally-controlled gold mineralisation of the Barberton  
104 Greenstone Belt. *Precambrian Res.* 285, 10–20.

105 Bower, D.M., 2011. Micro-Raman spectroscopic investigations of mineral assemblages in parallel to  
106 bedding laminae in 2.9 Ga sandstones of the Pongola Supergroup, South Africa. *J. Raman Spec.*  
107 42, 1626–1633.

108 Heubeck, C., 2009. An early ecosystem of Archean tidal microbial mats (Moodies Group, South  
109 Africa, ca. 3.2 Ga). *Geology* 37, 931–934.

110 Heubeck, C., Grosch, E., and Mason, P., 2016. *Geology of the Barberton Greenstone Belt: Processes*

111 on the early Earth. 35th International Geological Congress Field Trip Post-7, 4.-10. September  
112 2016, Guidebook, 64pp.

113 Hofmann, A., Bolhar, R., 2007. Carbonaceous Cherts in the Barberton Greenstone Belt and Their  
114 Significance for the Study of Early Life in the Archean Record. *Astrobiology* 7, 355-388.

115 Hofmann, A., Bolhar, R., Orberger, B., Foucher, F., 2013. Cherts of the Barberton Greenstone Belt,  
116 South Africa: Petrology and trace-element geochemistry of 3.5 to 3.3 Ga old silicified  
117 volcanoclastic sediments. *South Afr. J. Geol.* 116, 297-322.

118 Homann, M., Heubeck, C., Airo, A., Tice, M.M., 2015. Morphological adaptations of 3.22 Ga-old  
119 tufted microbial mats to Archean coastal habitats (Moodies Group, Barberton Greenstone Belt,  
120 South Africa). *Precam. Res.* 266, 47–64.

121 Homann, M., Sansjofre, P., Van Zuilen, M., Heubeck, C., Gong, J., Killingsworth, B., Foster, I.S.,  
122 Airo, A., Van Kranendonk, M.J., Ader, M., Lalonde, S.V., 2018. Microbial life and  
123 biogeochemical cycling on land 3,220 million years ago. *Nat. Geosci.* 11, 665–671.

124 Homann, M., Heubeck, C., 2021. A comment on “Metamorphic origin of anastomosing and wavy  
125 laminae overprinting putative microbial deposits from the 3.22 Ga Moodies Group (Barberton  
126 Greenstone Belt)”. *Precam. Res.* 365, 106395.

127 Janse van Rensburg, D.J., Heubeck, C., Reimann, S., 2021. Volcanoes in the estuaries: Insights into  
128 Earth’s oldest (3.22 Ga) terrestrial microbial habitats, Moodies Group, Barberton Greenstone  
129 Belt. *Precam. Res.* 365, 106325.

130 Lowe, D.R., Byerly, G.R. and Heubeck, C.E., 2012. Geologic Map of the west-central Barberton  
131 Greenstone Belt, South Africa. (103rd Edition). Geological Society of America.

132 Noffke, N., Eriksson, K.A., Hazen, R.M., Simpson, Edward L., 2006. A new window into Early  
133 Archean life: Microbial mats in Earth’s oldest siliciclastic tidal deposits (3.2 Ga Moodies Group,  
134 South Africa). *Geology* 34 (4), 253–256.

135 Reimann, S., Heubeck, C.E., Fugmann, P., Janse van Rensburg, D.J., Zametzer, A., Serre, S.H.,  
136 Thomsen, T.B., 2021. Syndepositional hydrothermalism selectively preserves records of one of the  
137 earliest benthic ecosystems, Moodies Group (3.22 Ga), Barberton Greenstone Belt, South Africa.  
138 *South Afr. J. Geol.* 124, 253–278. <https://doi.org/10.25131/sajg.124.0012>.

139 Saitoh, M., Nabhan, S., Thomazo, C., Olivier, N., Moyon, J.-F., Ueno, Y., Marin-Carbonne, J. 2020.  
140 Multiple Sulfur Isotope Records of the 3.22 Ga Moodies Group, Barberton Greenstone Belt.  
141 *Geosciences* 10, 145, <https://dx.doi.org/10.3390/geosciences10040145>.

142 Saitoh, M., Olivier, N., Garçon, M., Boyet, M., Thomazo, C., Alleon, J., Moyon, J.-F., Motto-Ros, V.,  
143 Marin-Carbonne, J., 2021. Metamorphic origin of anastomosing and wavy laminae overprinting  
144 putative microbial deposits from the 3.22 Ga Moodies Group (Barberton Greenstone Belt).  
145 *Precam. Res.* 362, 106306.

146 Thomazo, C., Couradeau, E., Giraldo-Silva, A., Marin-Carbonne, J., Brayard, A., Homann, M.,  
147 Sansjofre, P., Lalonde, S.V., Garcia-Pichel, F., 2020. Carbon and nitrogen isotope biosignatures

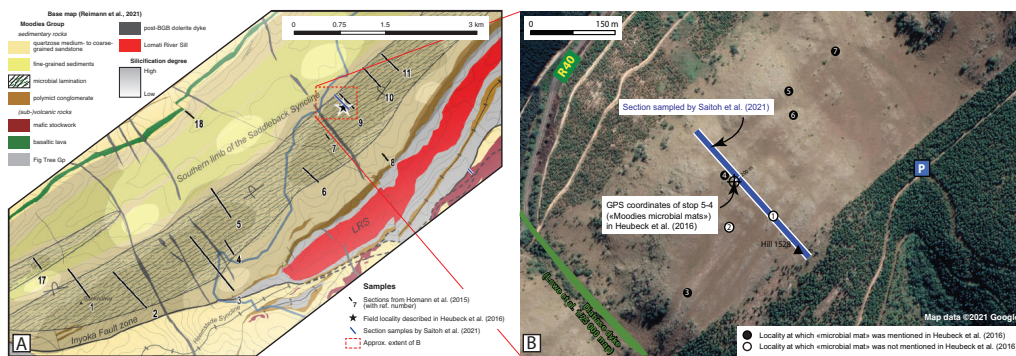
148 of the Archean continental biosphere: A comparison with modern analogs. *Astrobiology*.  
149 <https://doi.org/10.1089/ast.2019.2144>.

150

### 151 **Figure Caption**

152

153 Fig. 1. Locality of the studied section in Saitoh et al. (2021). (A) Map showing the distribution of  
154 “microbial laminations” and rock silicification degree along the southern limb of the Saddleback  
155 Syncline (Reimann et al., 2021). (B) Google Earth satellite image of an enlarged square in A,  
156 showing the studied section in Saitoh et al. (2021). A diabase dyke is based on Lowe et al.  
157 (2012).



158