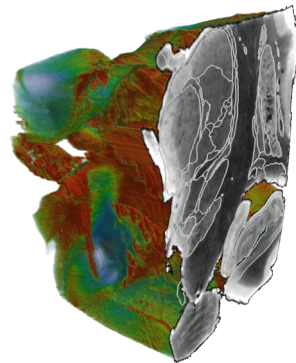

MRI ATLAS OF THE HUMAN DEEP BRAIN

Jean-Jacques Lemaire, MD, PhD, neurosurgeon, University Hospital of Clermont-Ferrand,
Université Clermont Auvergne, CNRS, SIGMA, France



This work is licensed under the Creative Commons Attribution-NonCommercial-NoDerivatives 4.0 International License. To view a copy of this license, visit <http://creativecommons.org/licenses/by-nc-nd/4.0/> or send a letter to Creative Commons, PO Box 1866, Mountain View, CA 94042, USA.

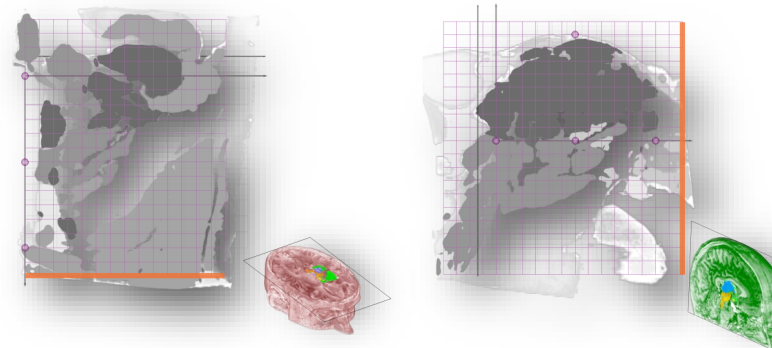
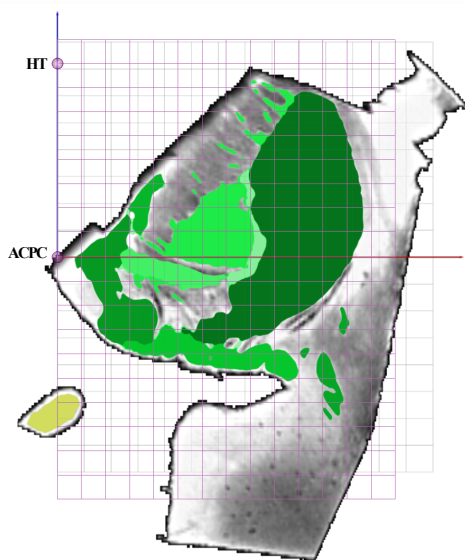
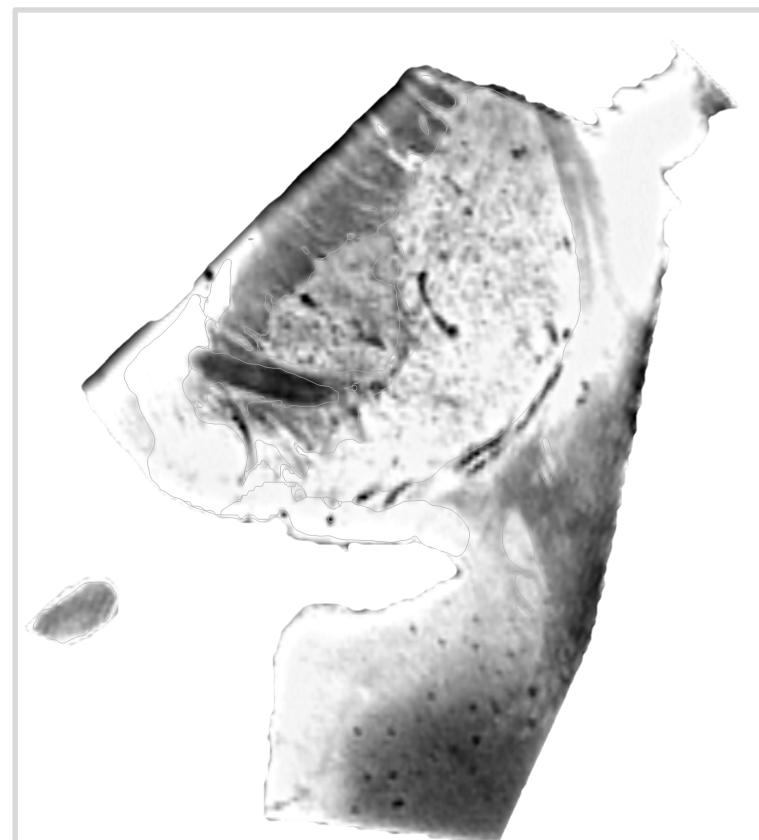
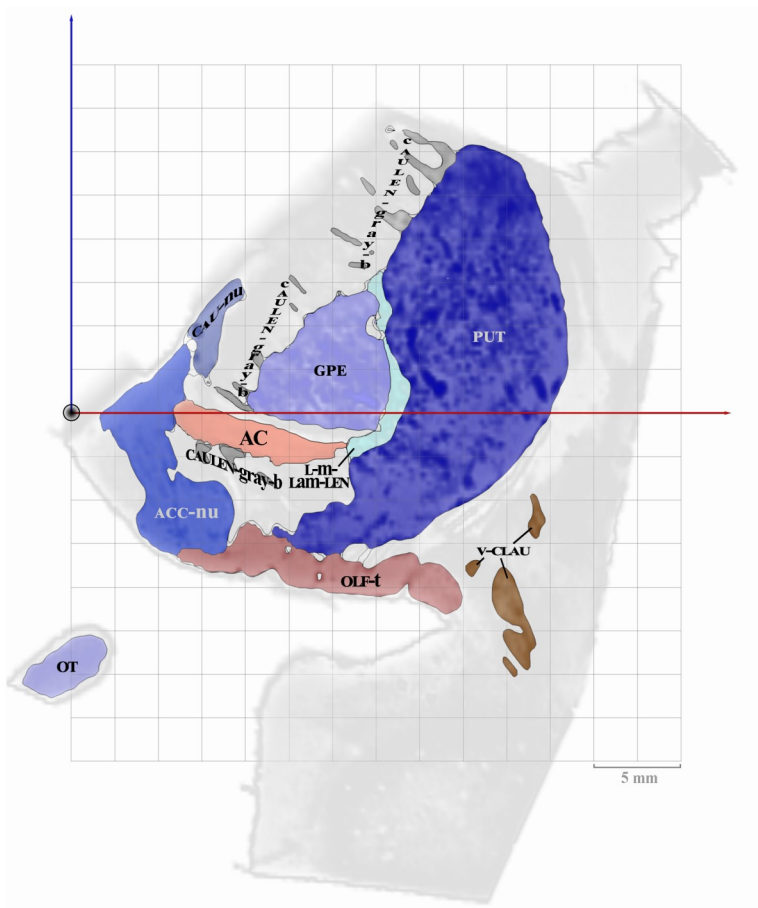
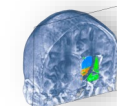


CORONAL PLATES

February 2019

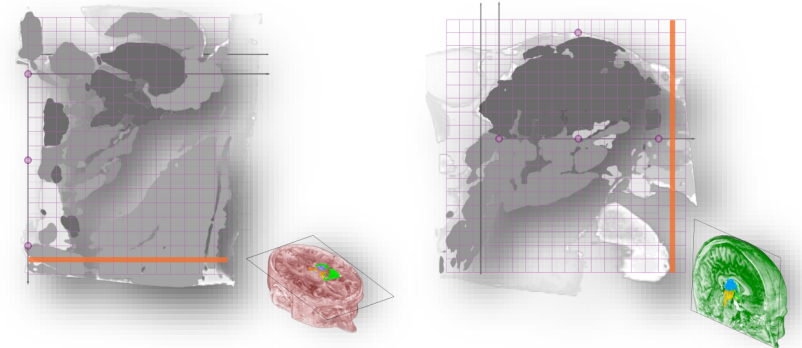
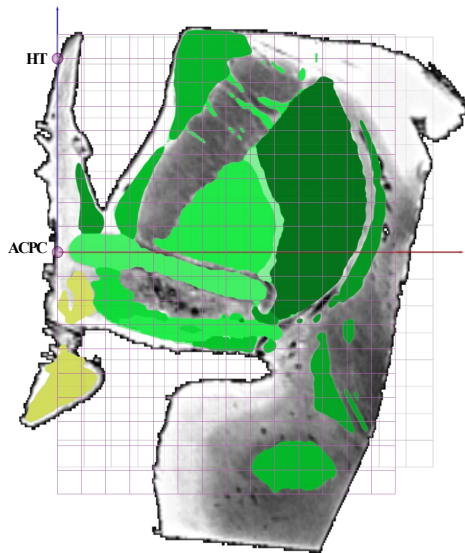
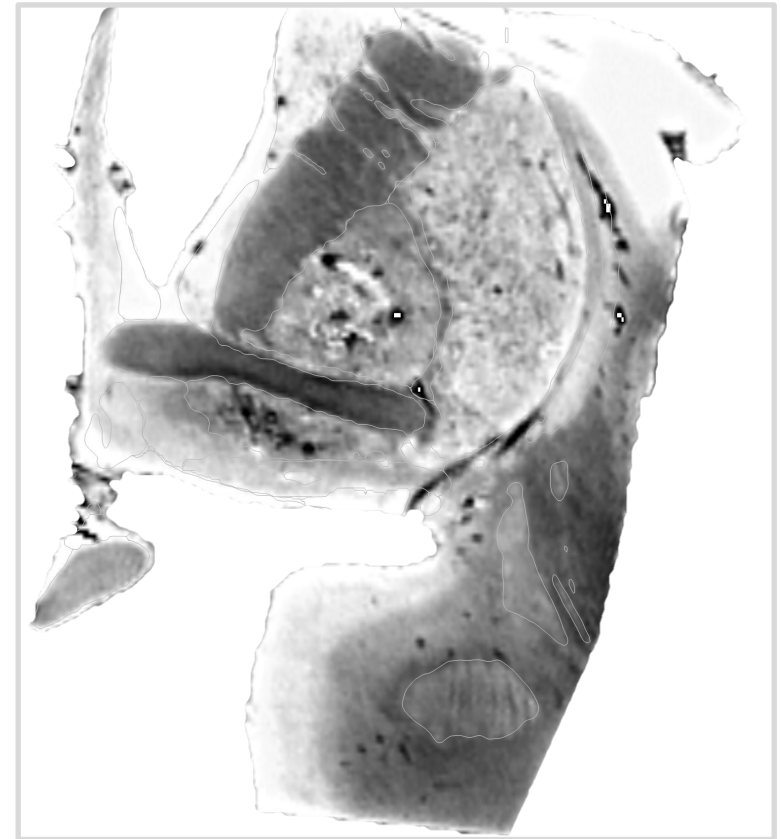
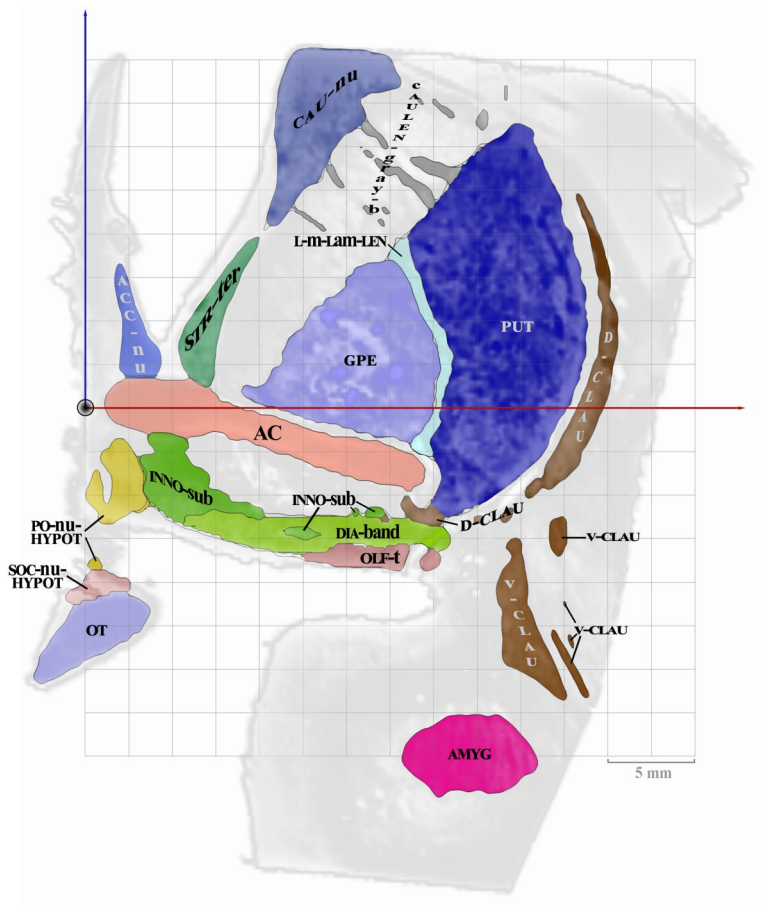
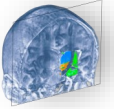
CF2

Coronal MRI slice 4.5 mm in front of AC



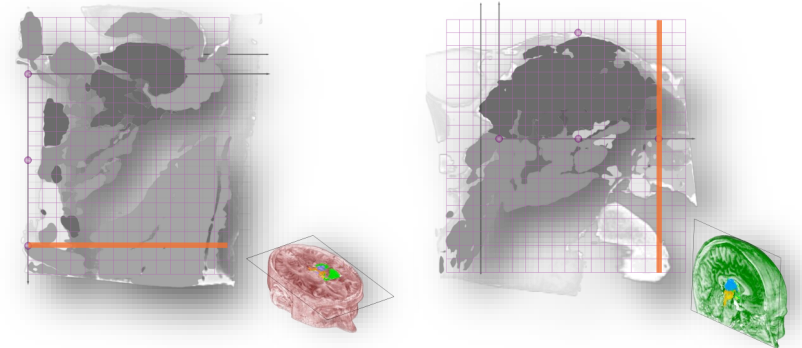
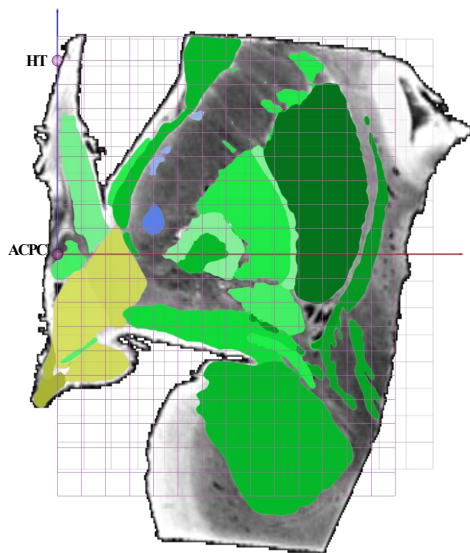
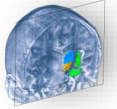
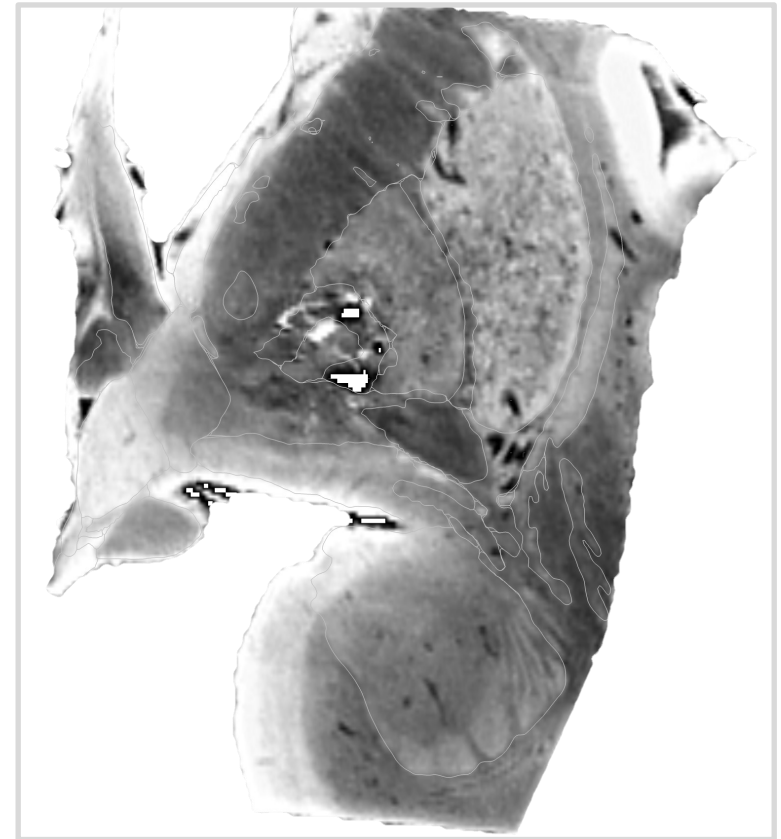
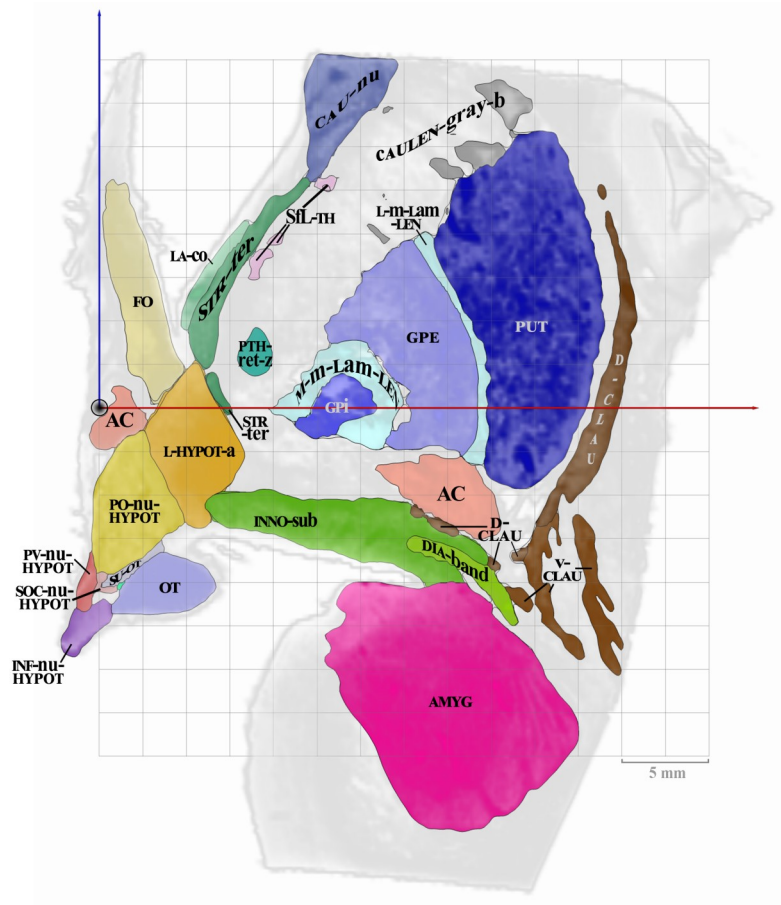
CF1

Coronal MRI slice 2.2 mm in front of AC



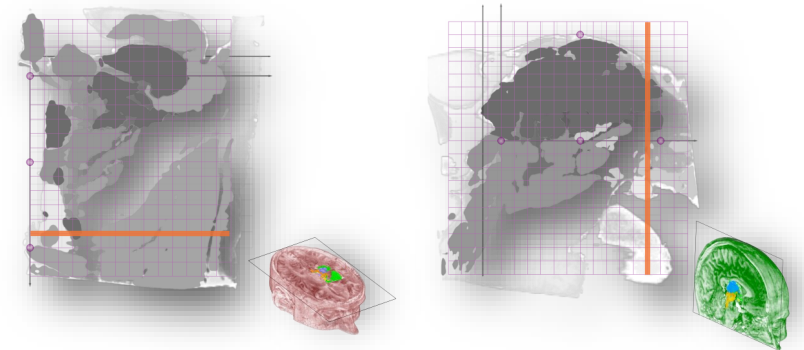
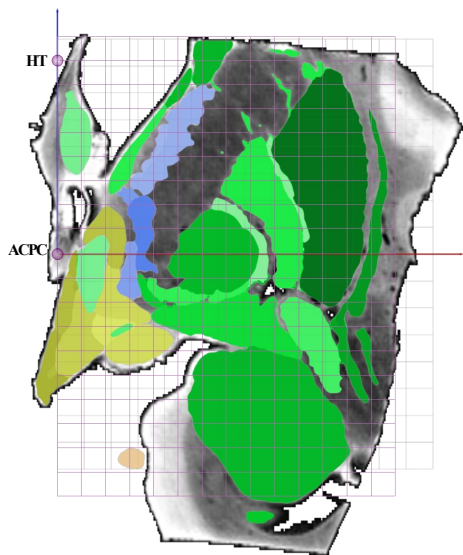
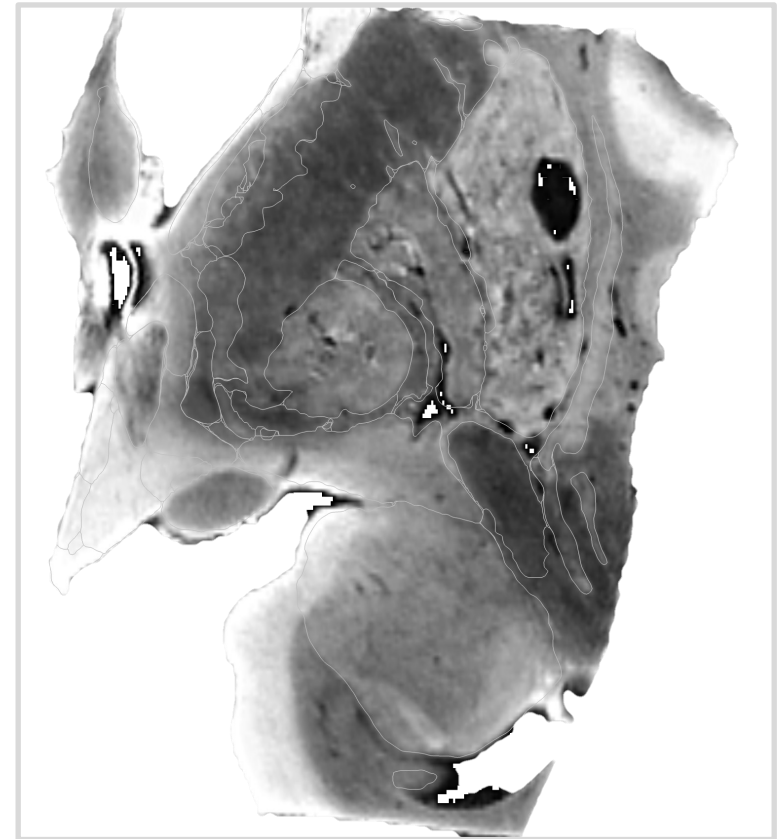
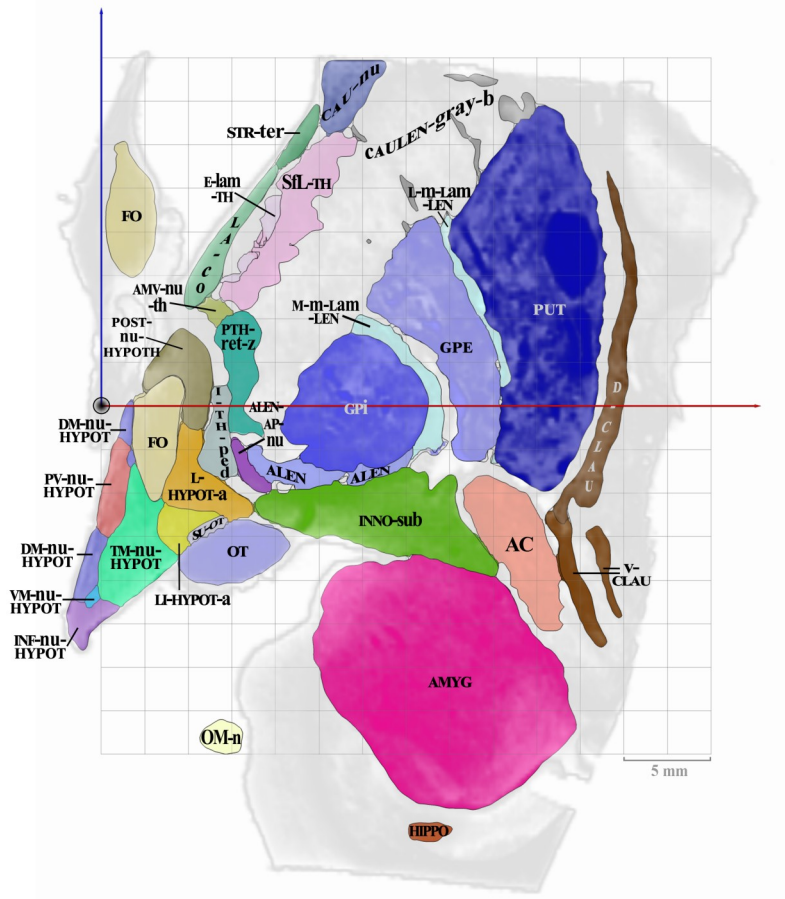
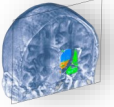
C0-AC

Coronal MRI slice going through AC



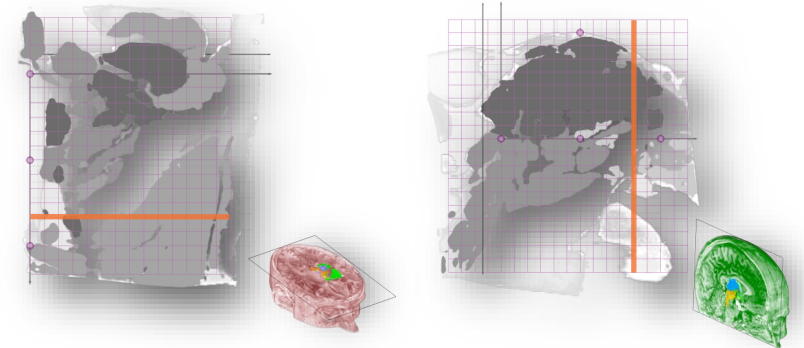
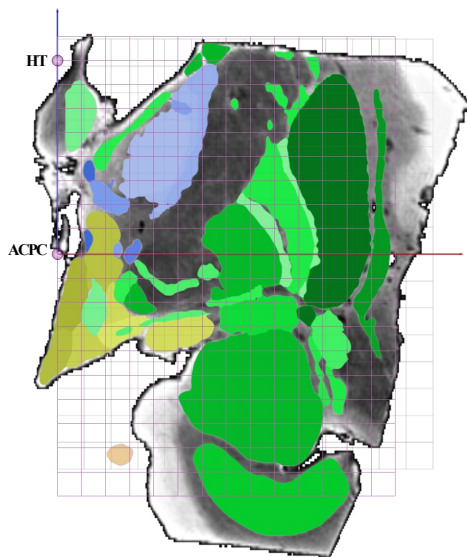
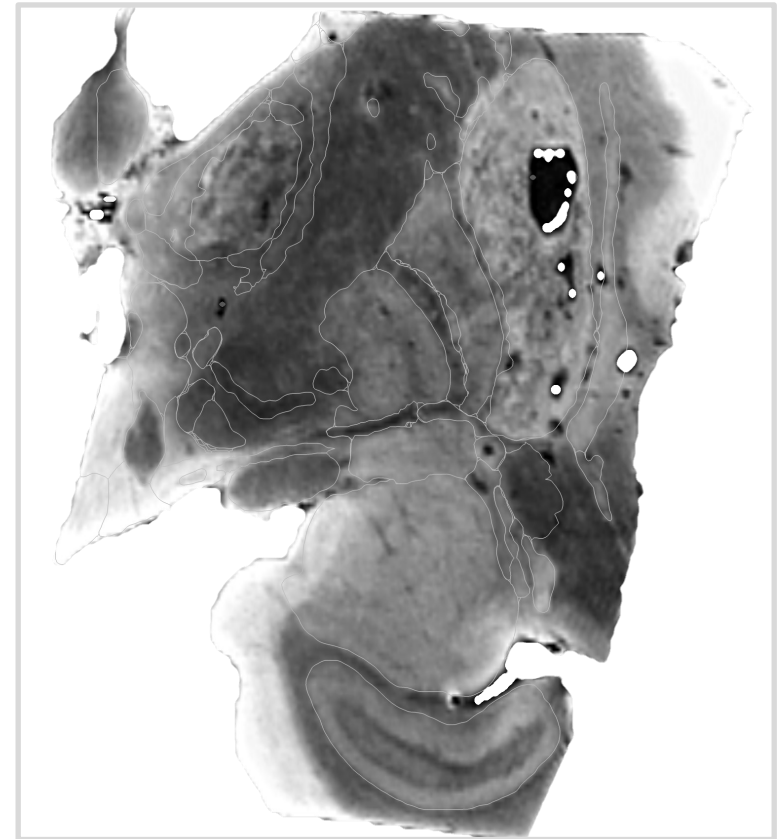
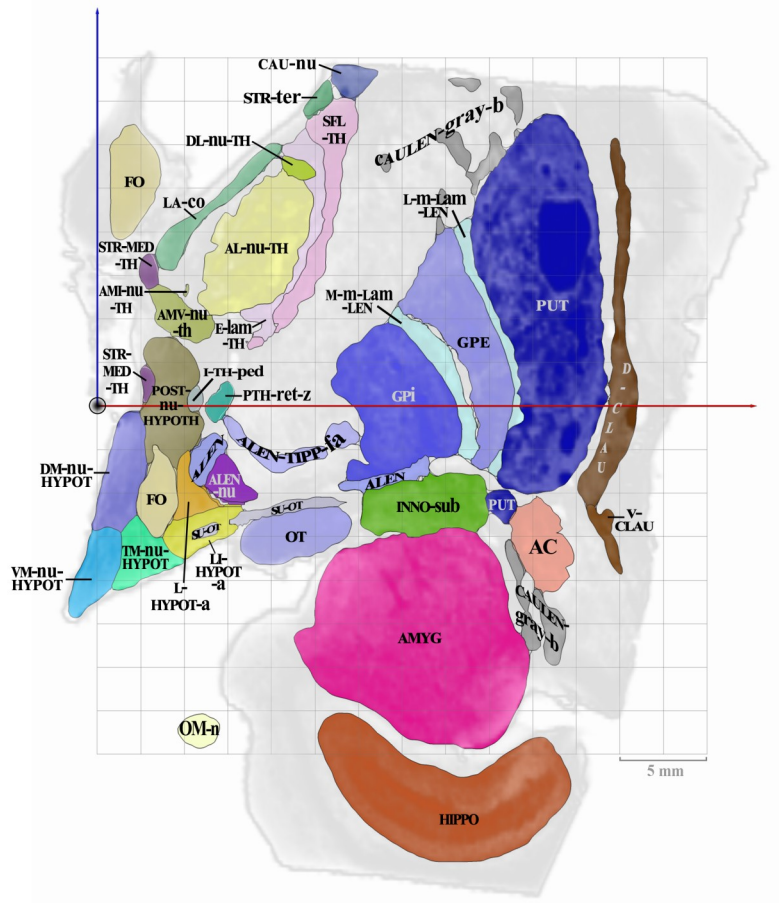
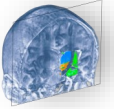
CR1

Coronal MRI slice 2.2 mm rear to AC



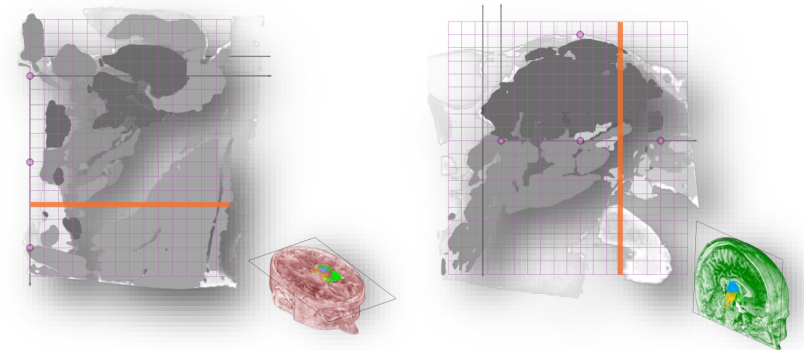
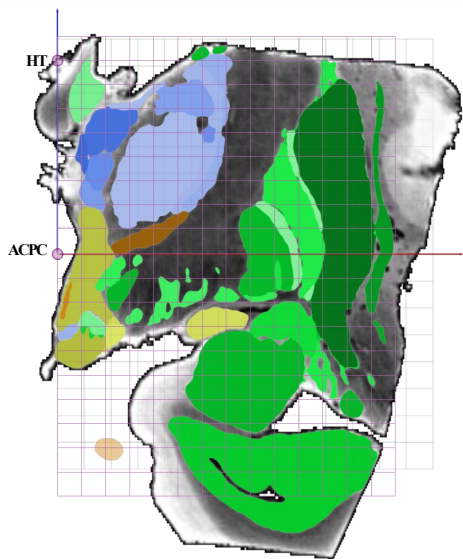
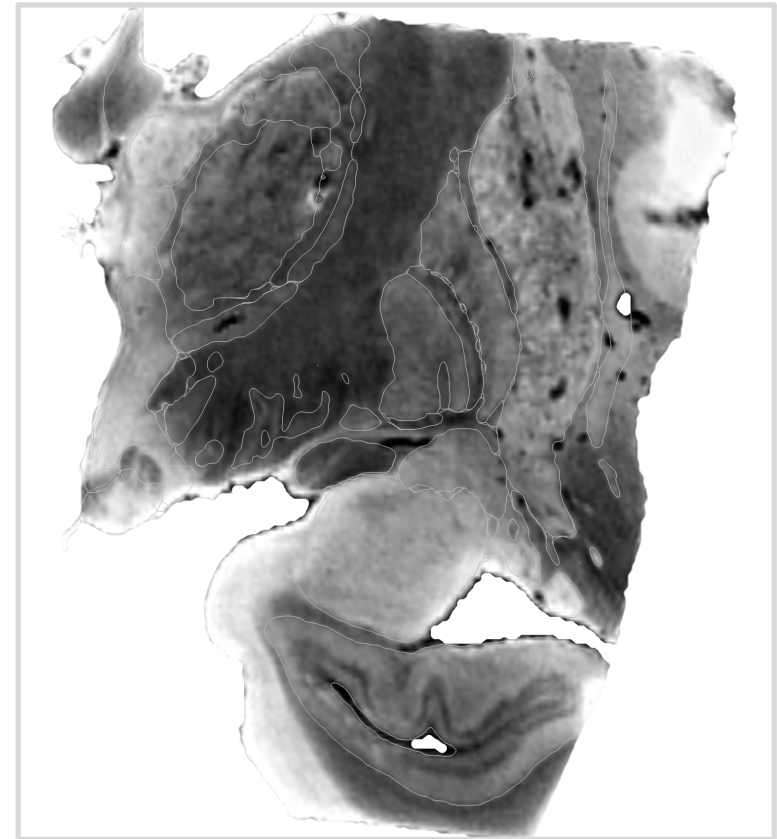
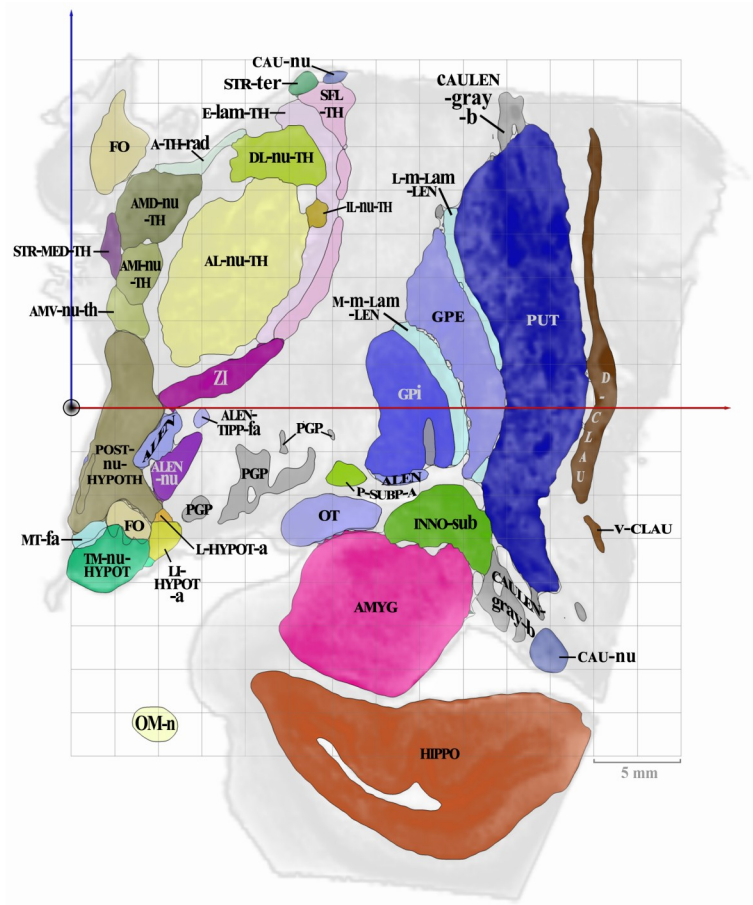
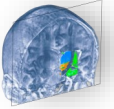
CR2

Coronal MRI slice 4.5 mm rear to AC



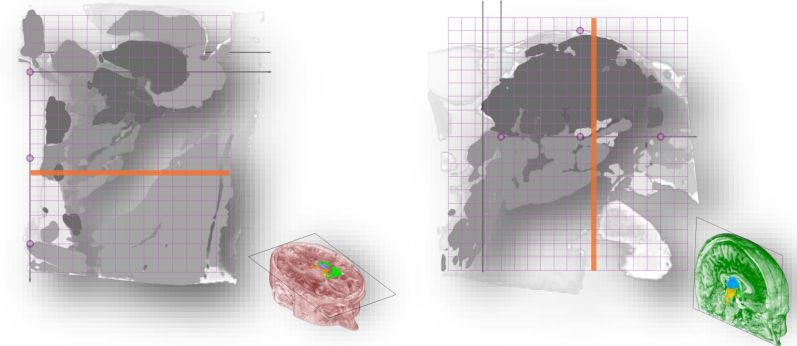
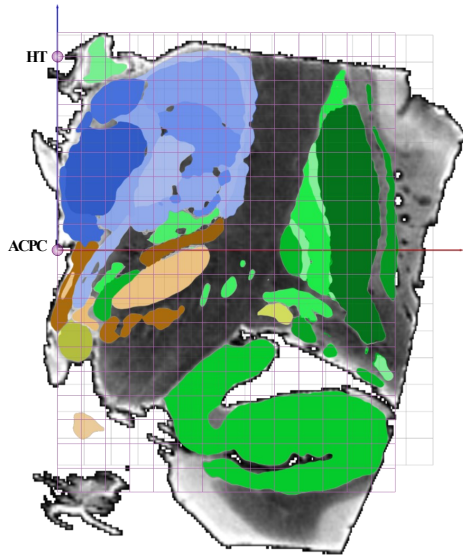
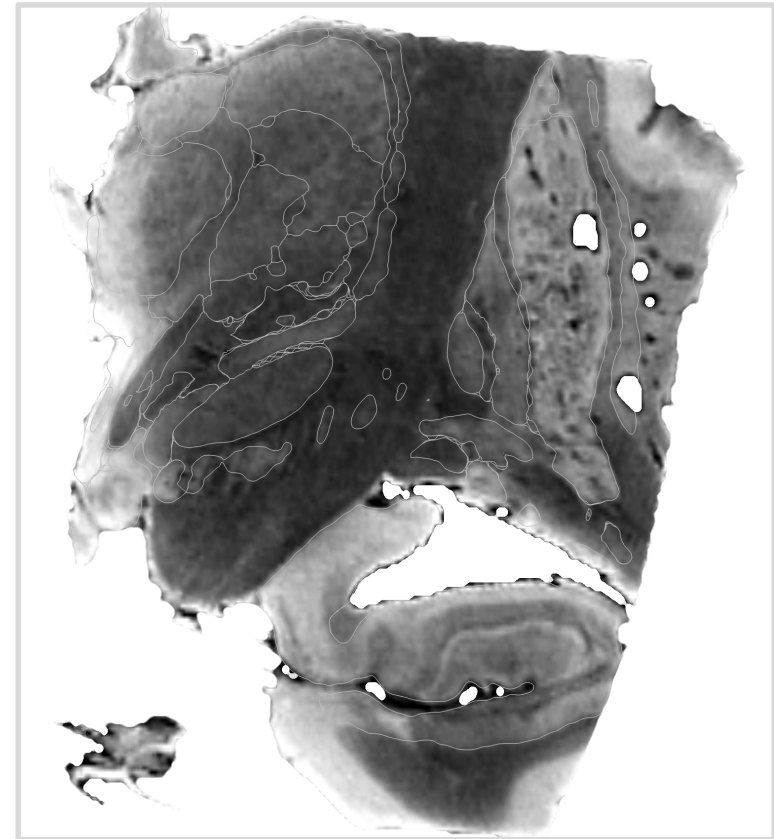
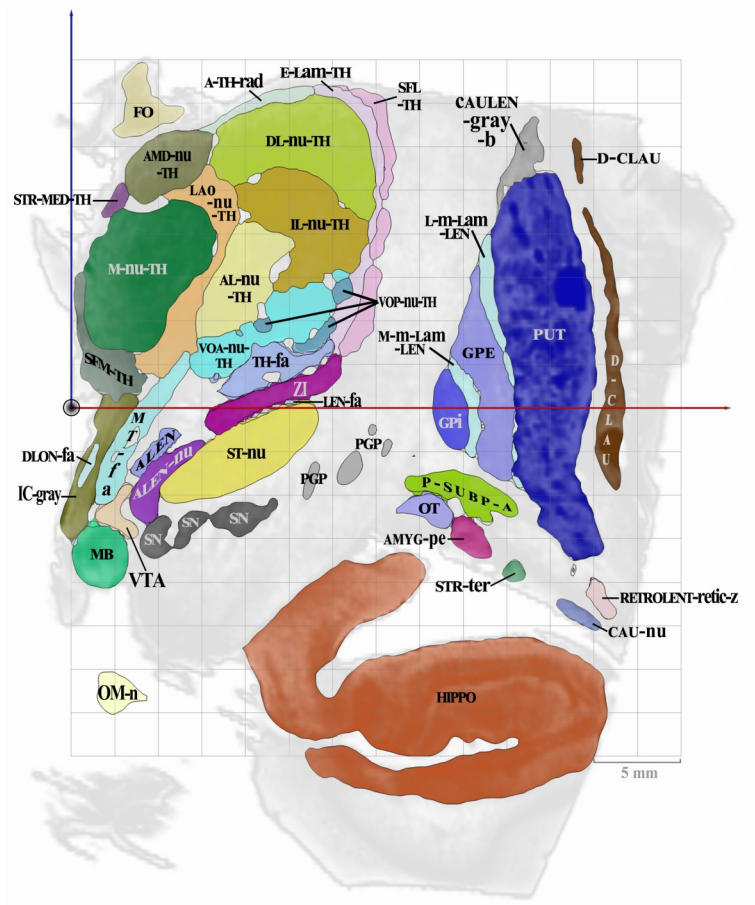
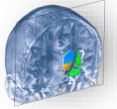
CR3

Coronal MRI slice 6.7 mm rear to AC



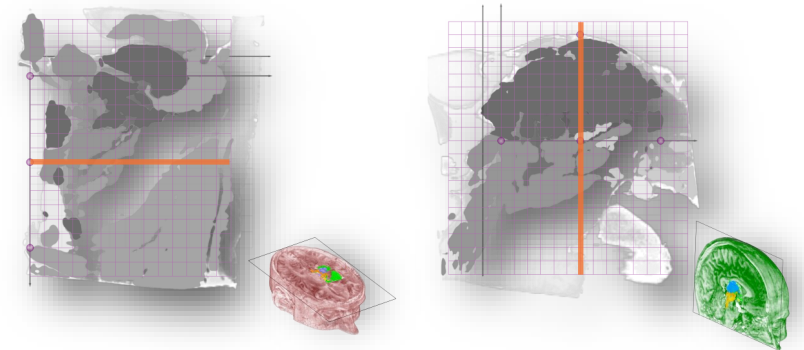
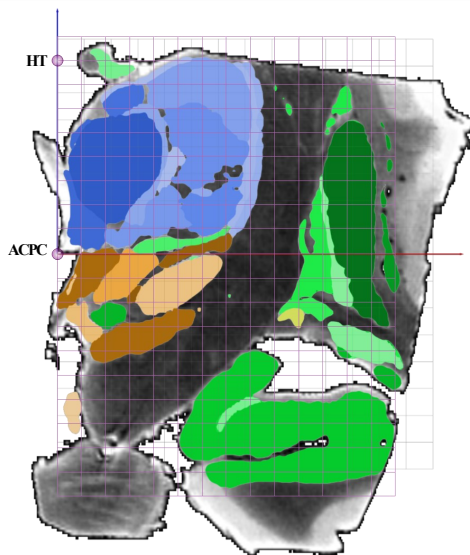
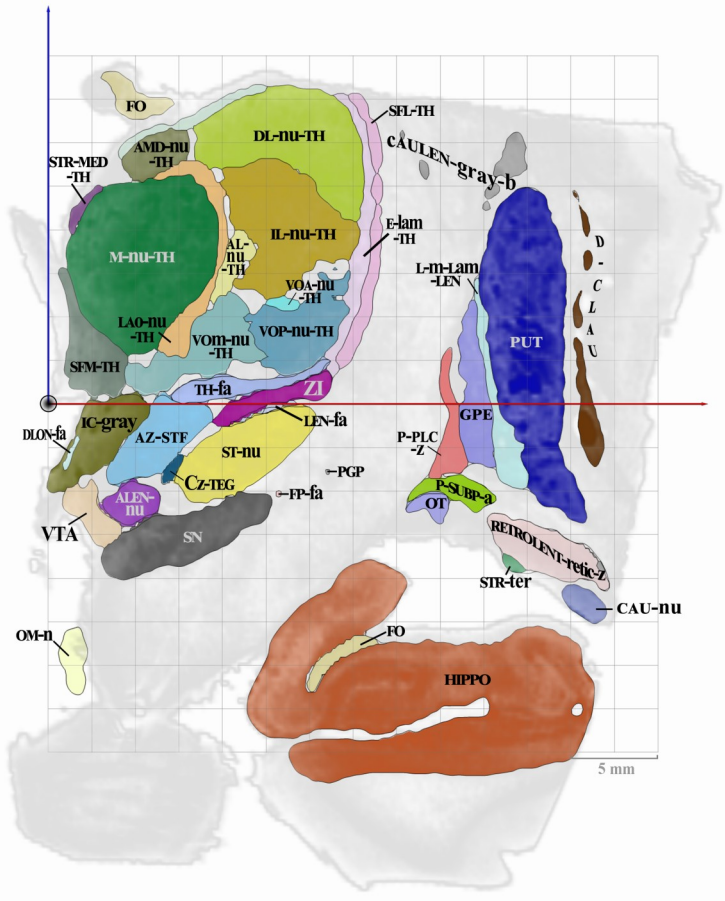
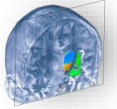
CR5

Coronal MRI slice 11.2 mm rear to AC



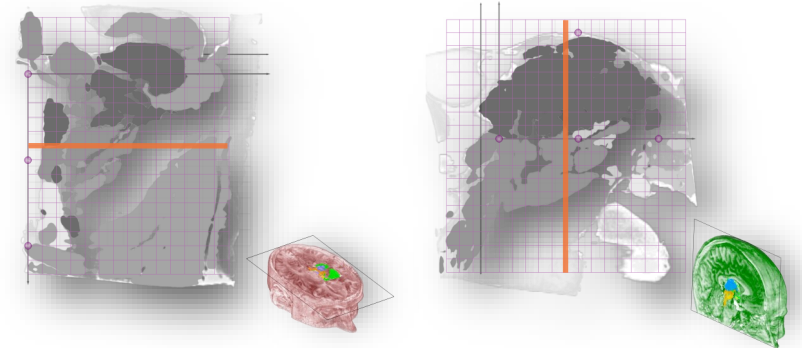
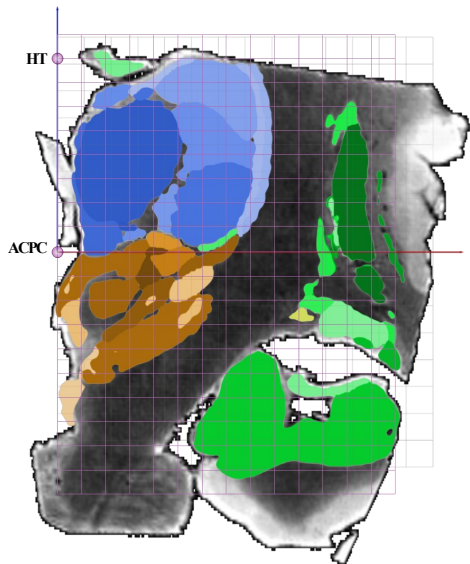
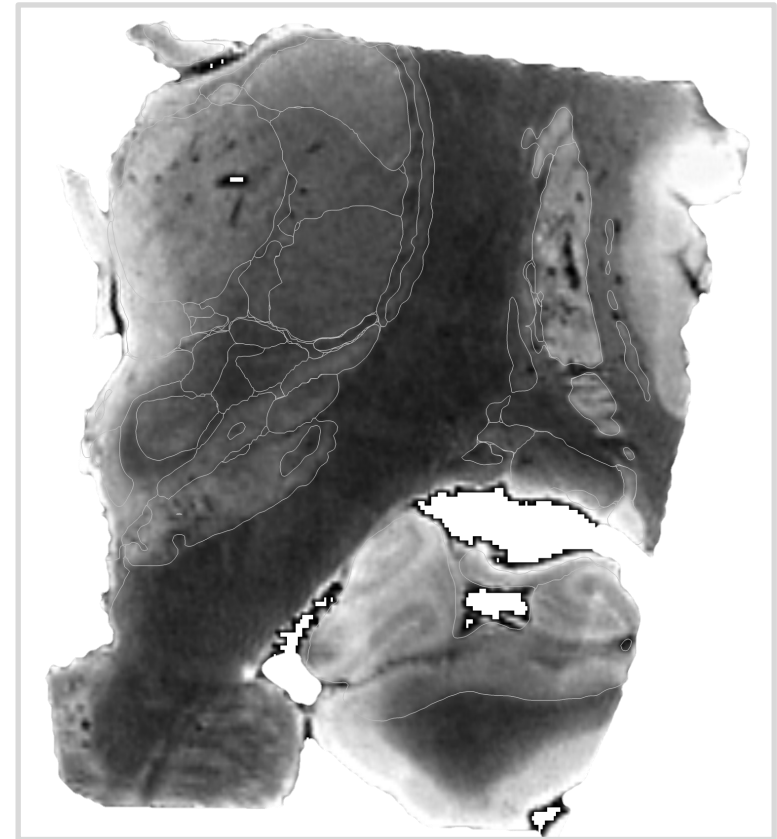
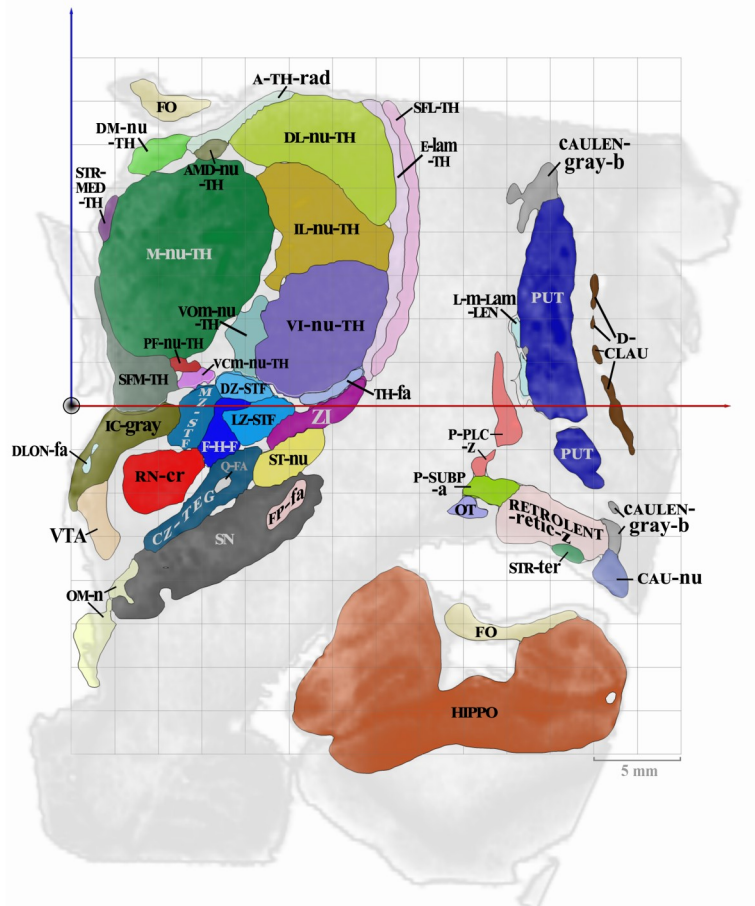
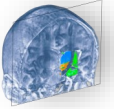
CR6-MI

Coronal MRI slice 13.5 mm rear to AC



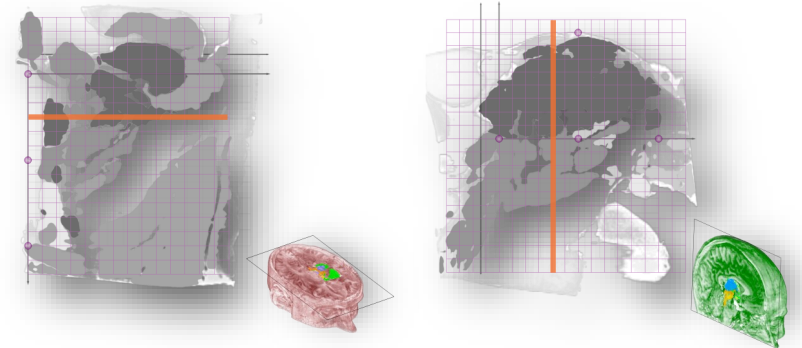
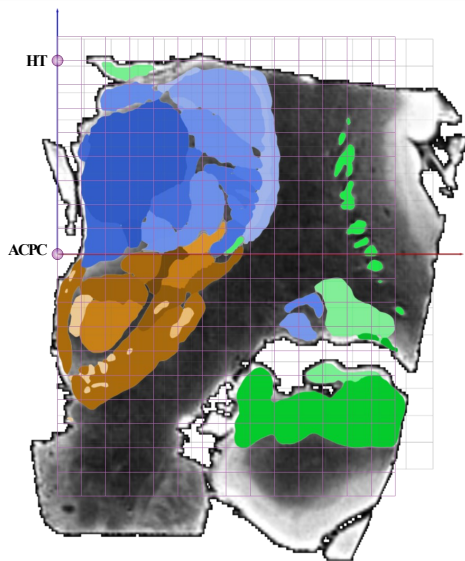
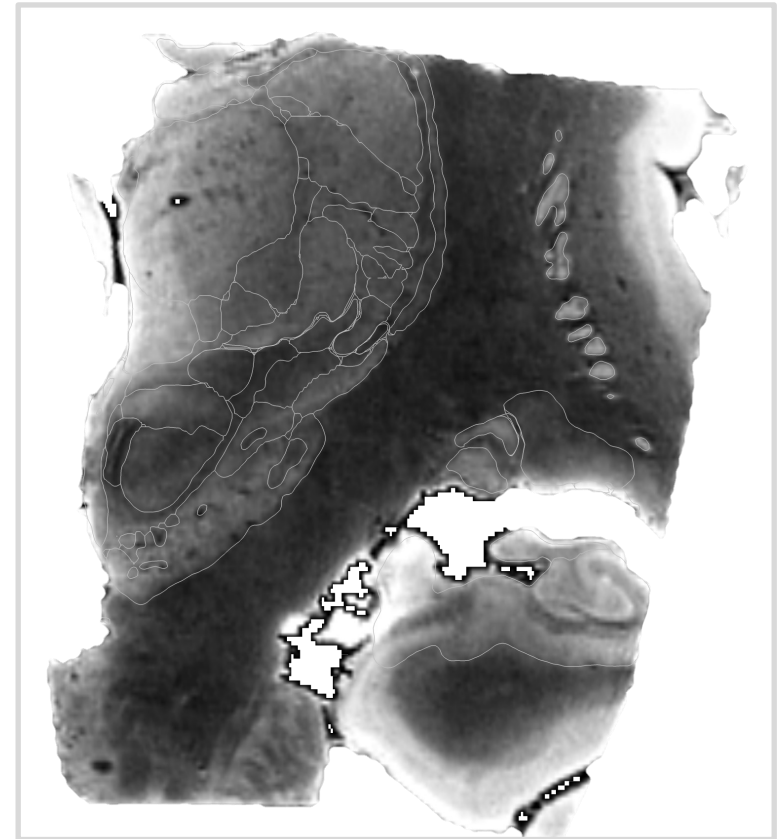
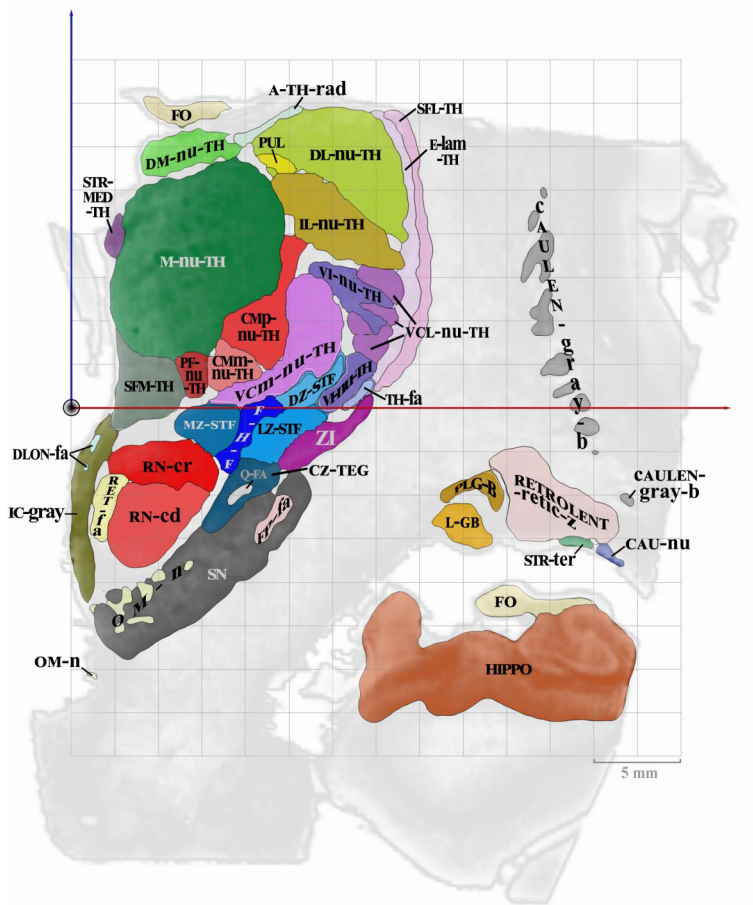
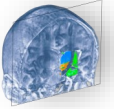
CR7

Coronal MRI slice 15.7 mm rear to AC



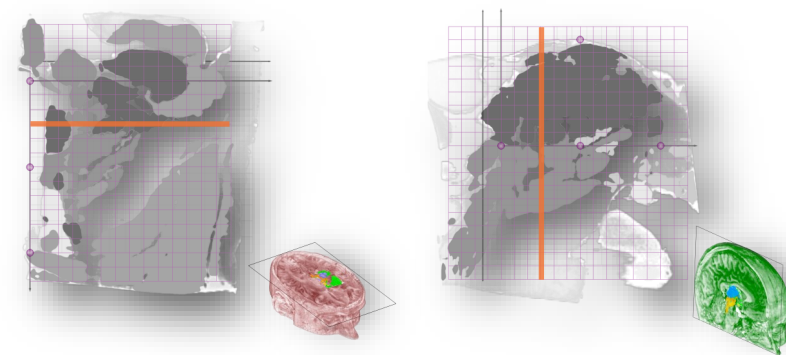
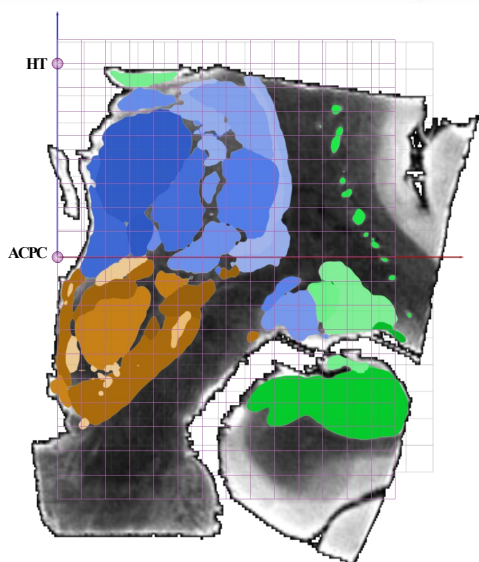
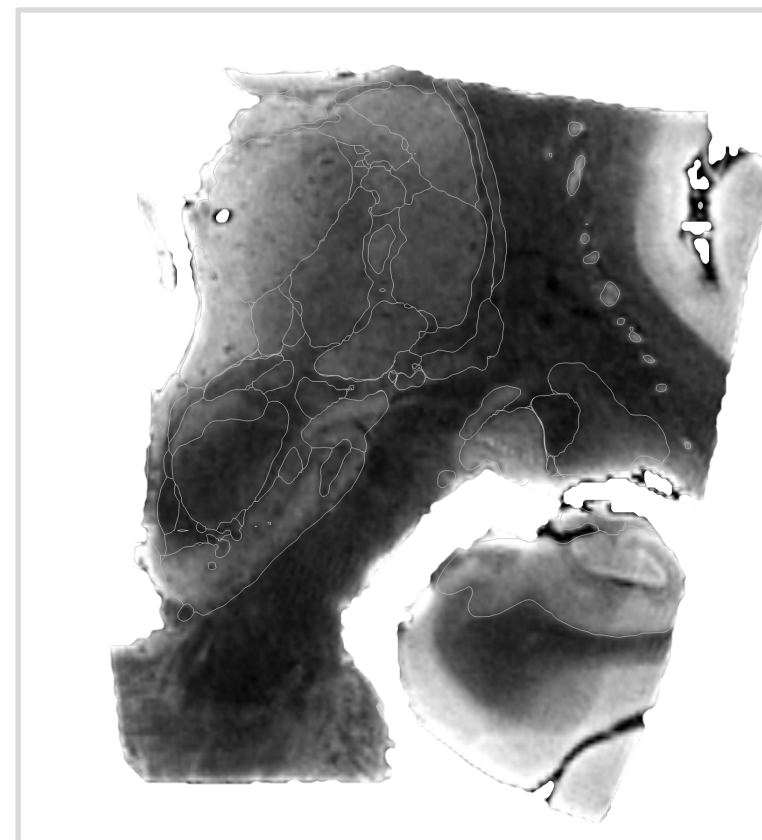
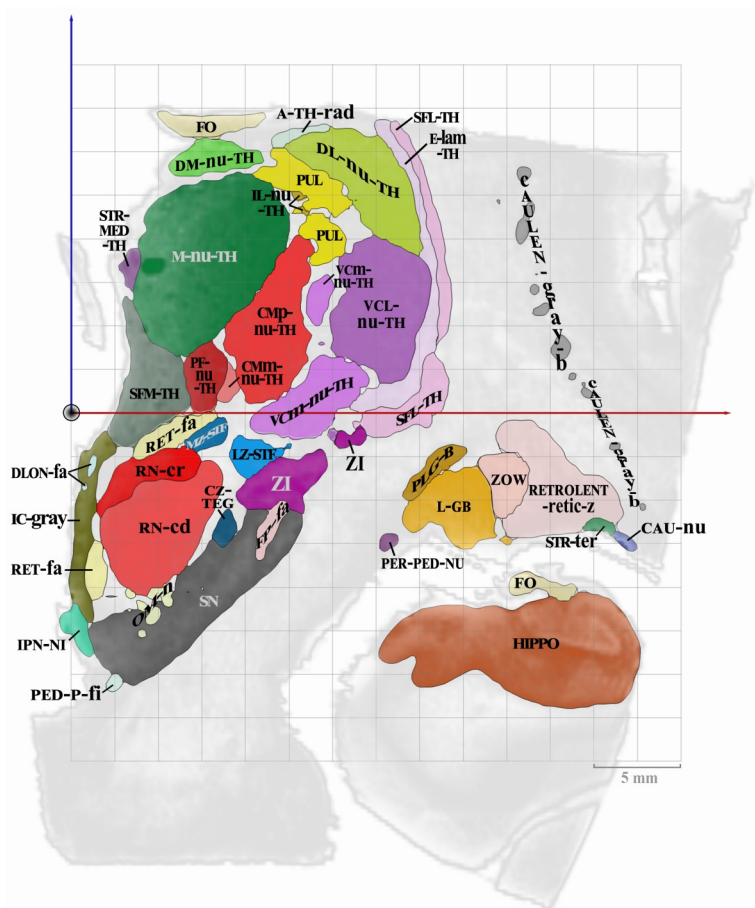
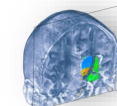
CR8

Coronal MRI slice 18 mm rear to AC



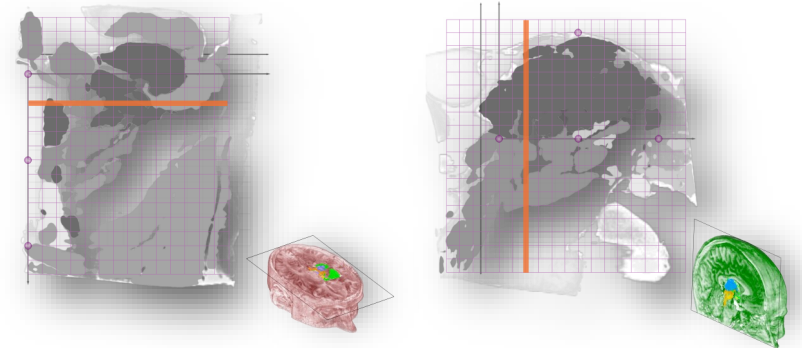
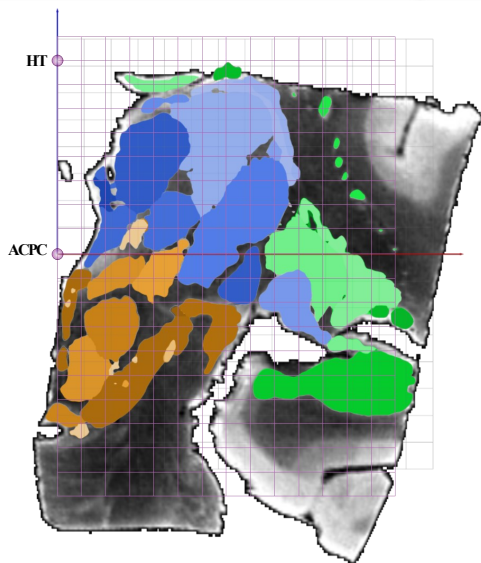
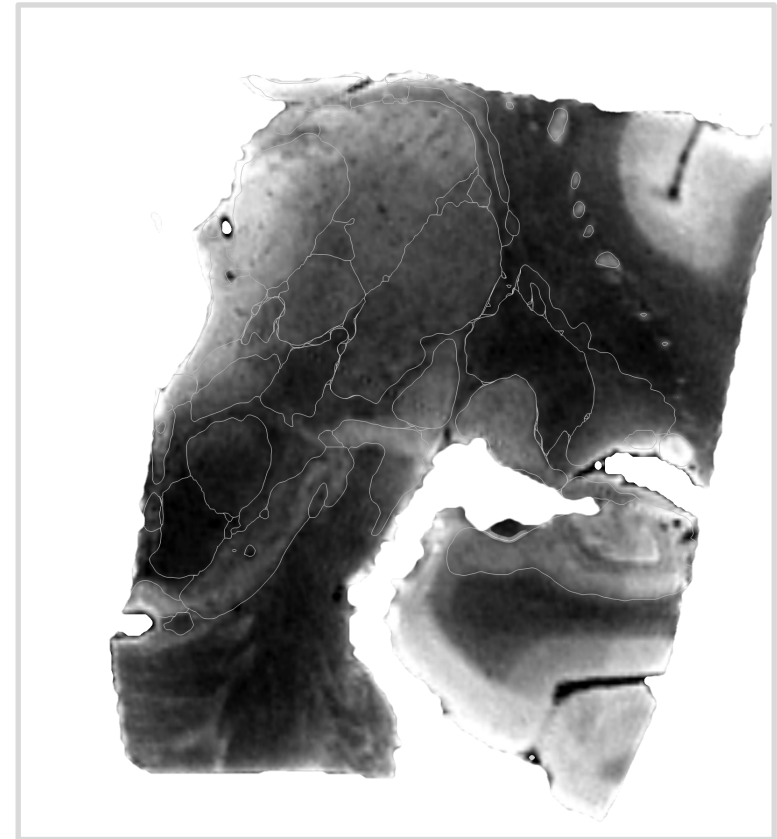
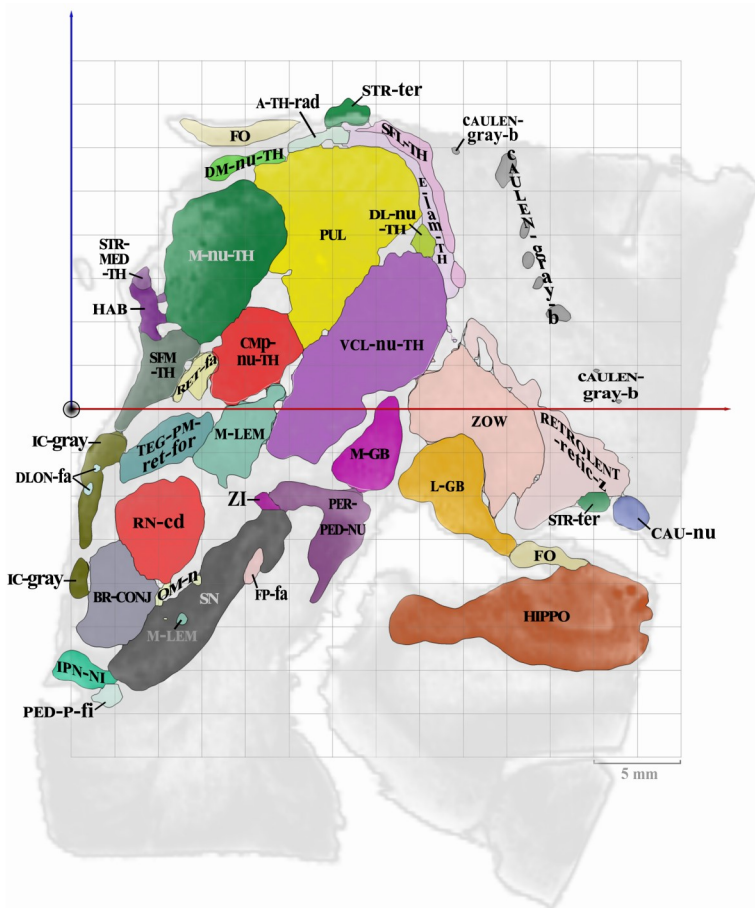
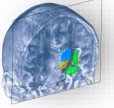
CR9

Coronal MRI slice 20.2 mm rear to AC



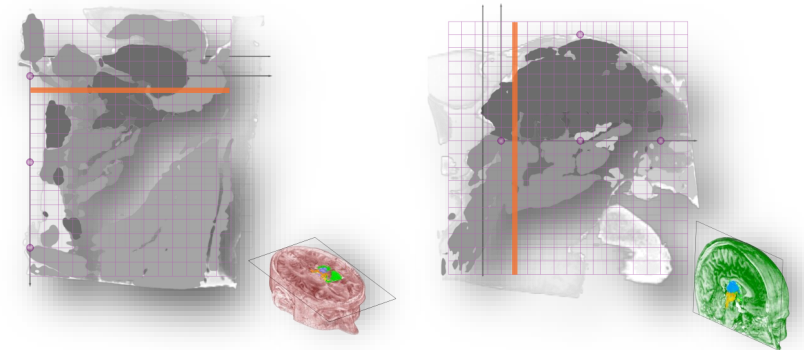
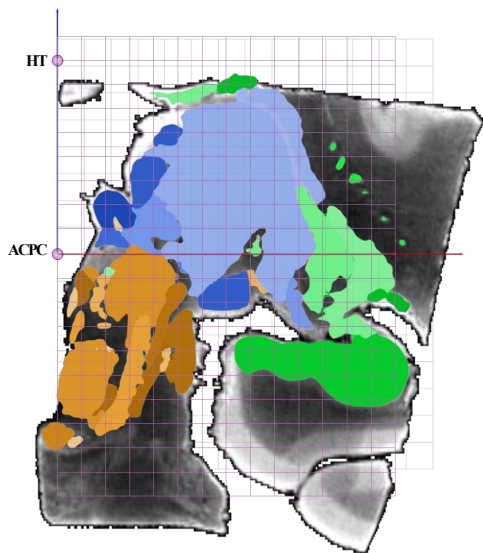
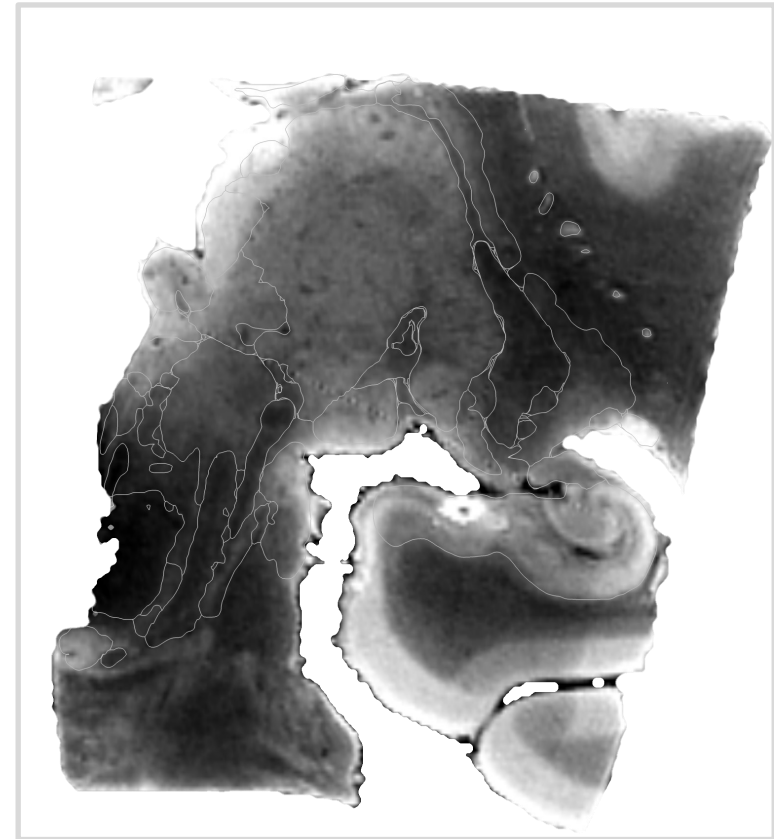
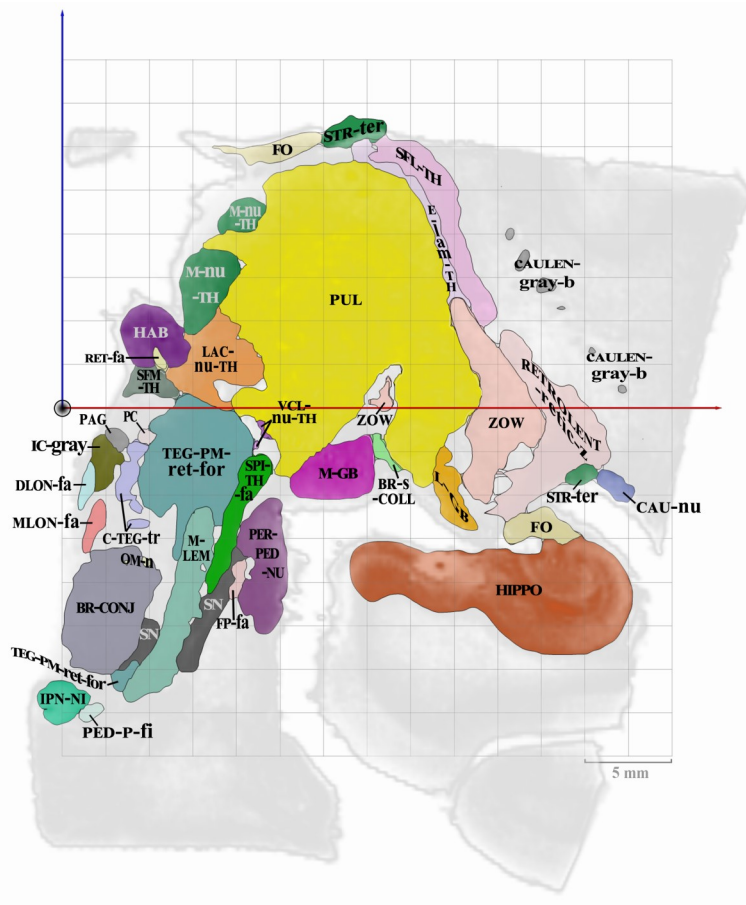
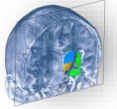
CR10

Coronal MRI slice 22.5 mm rear to AC



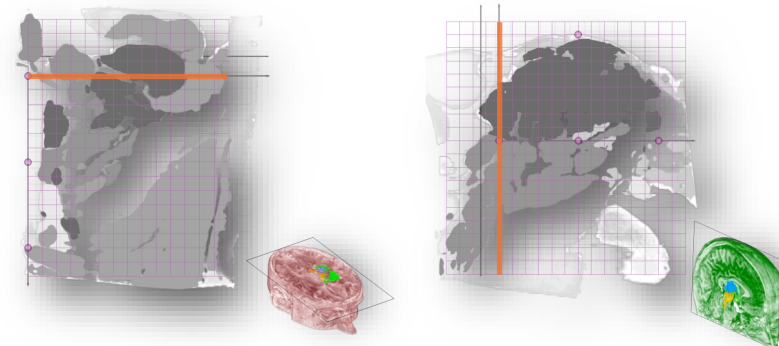
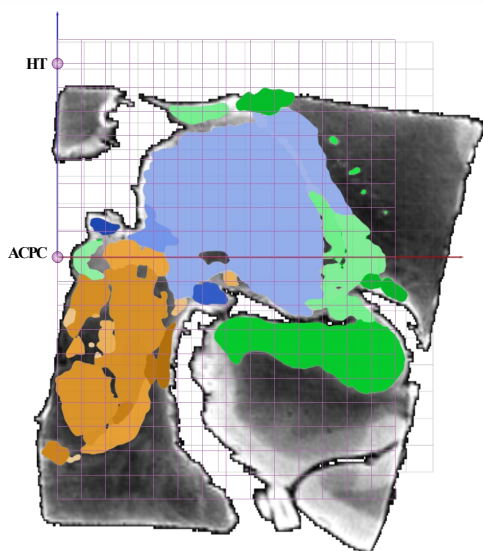
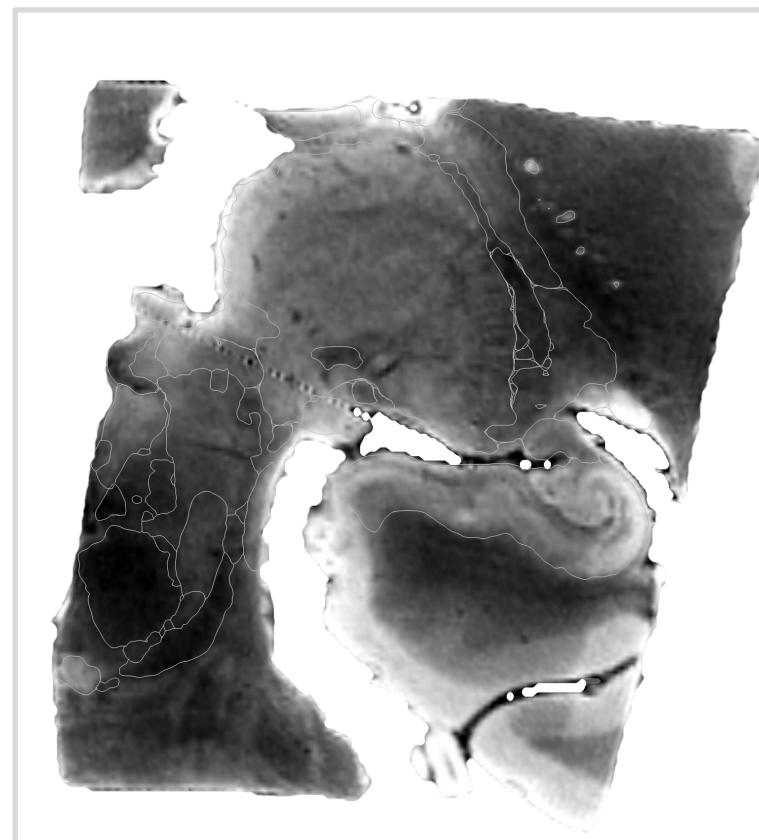
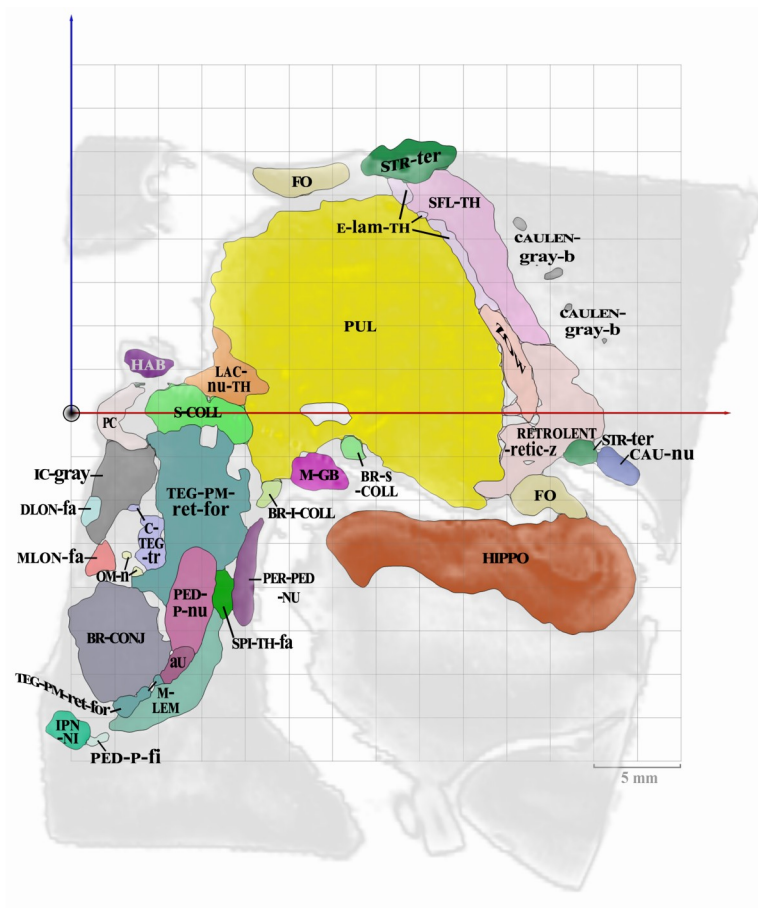
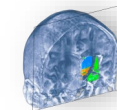
CR11

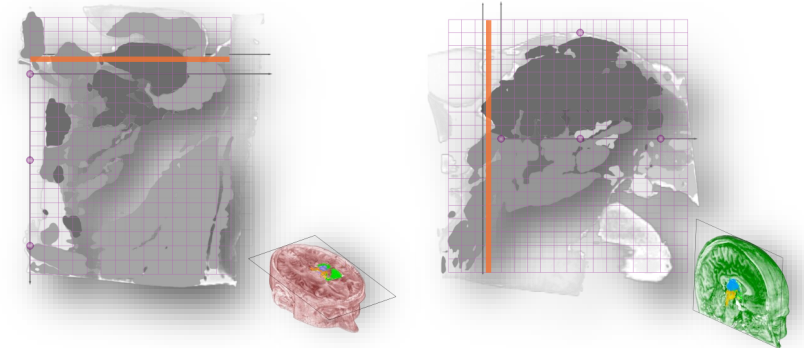
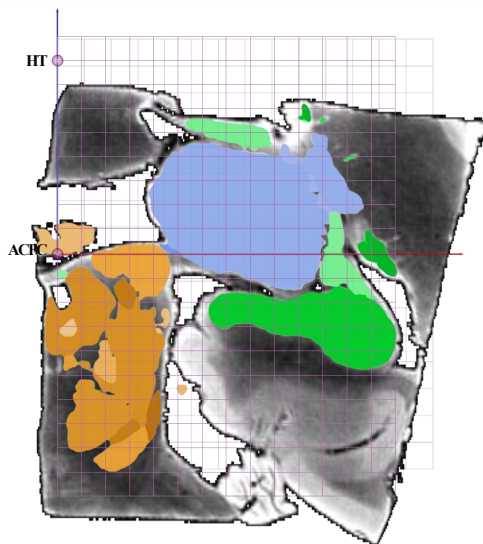
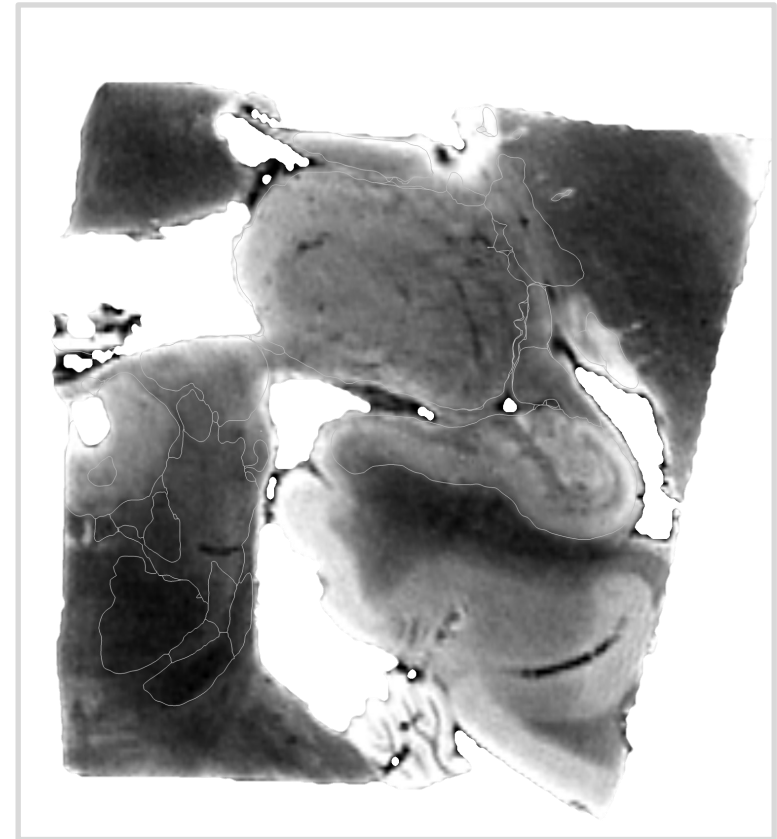
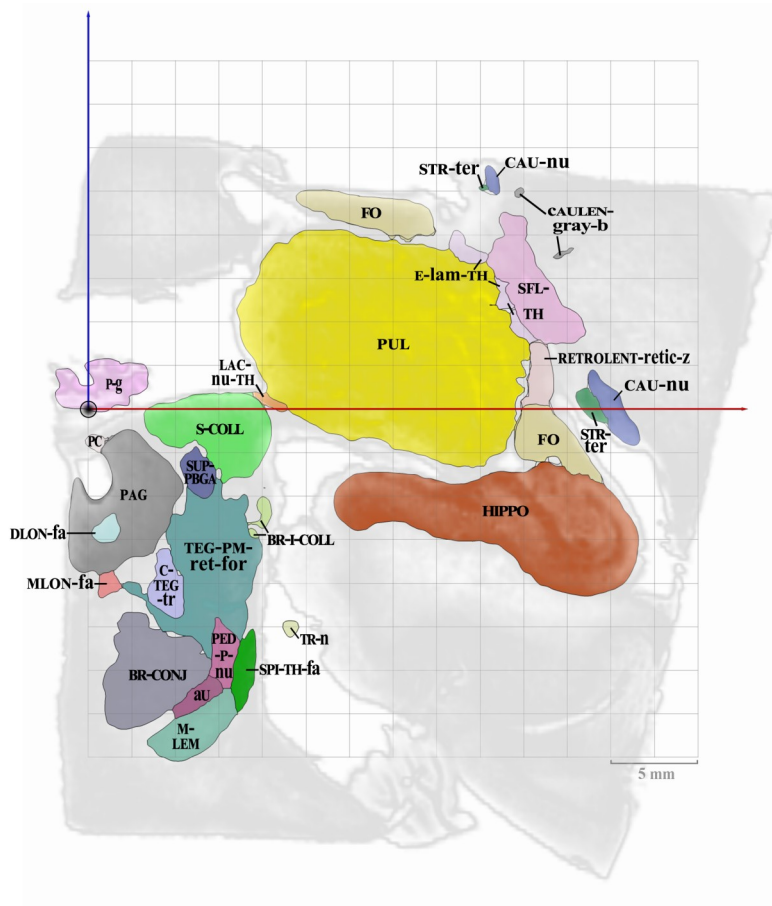
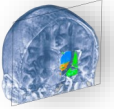
Coronal MRI slice 24.7 mm rear to AC



CR12-PC

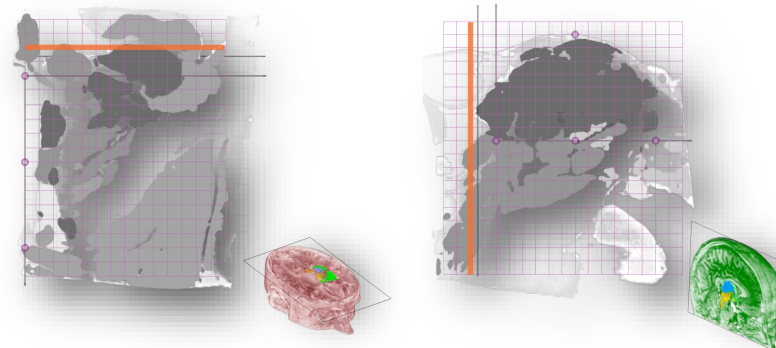
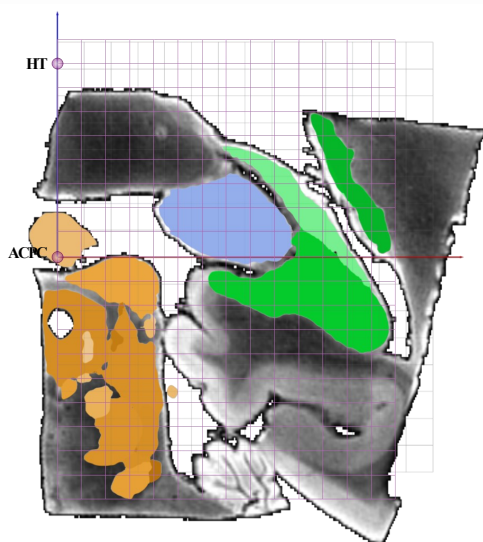
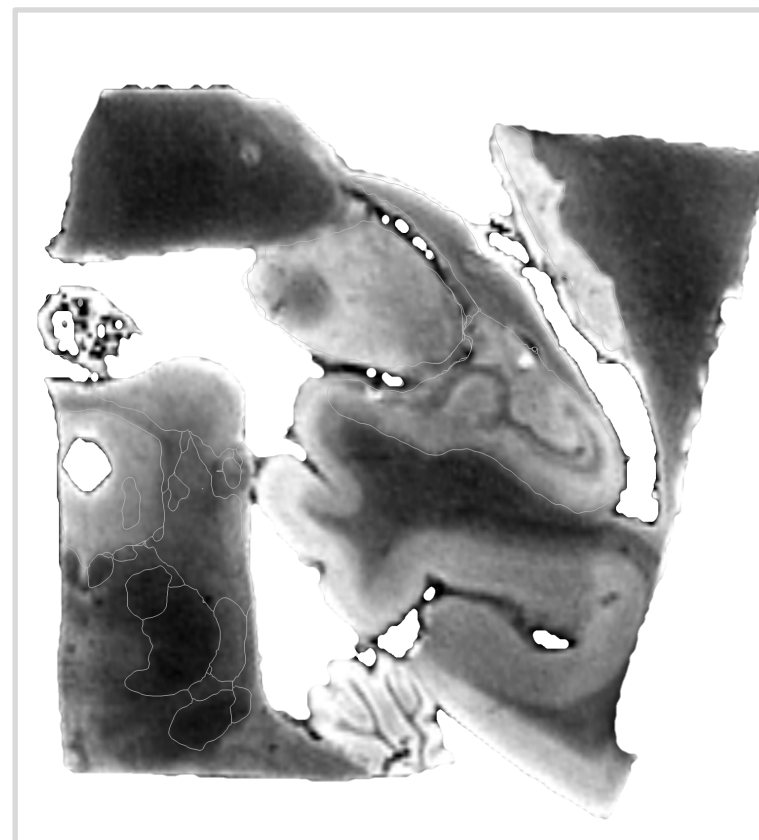
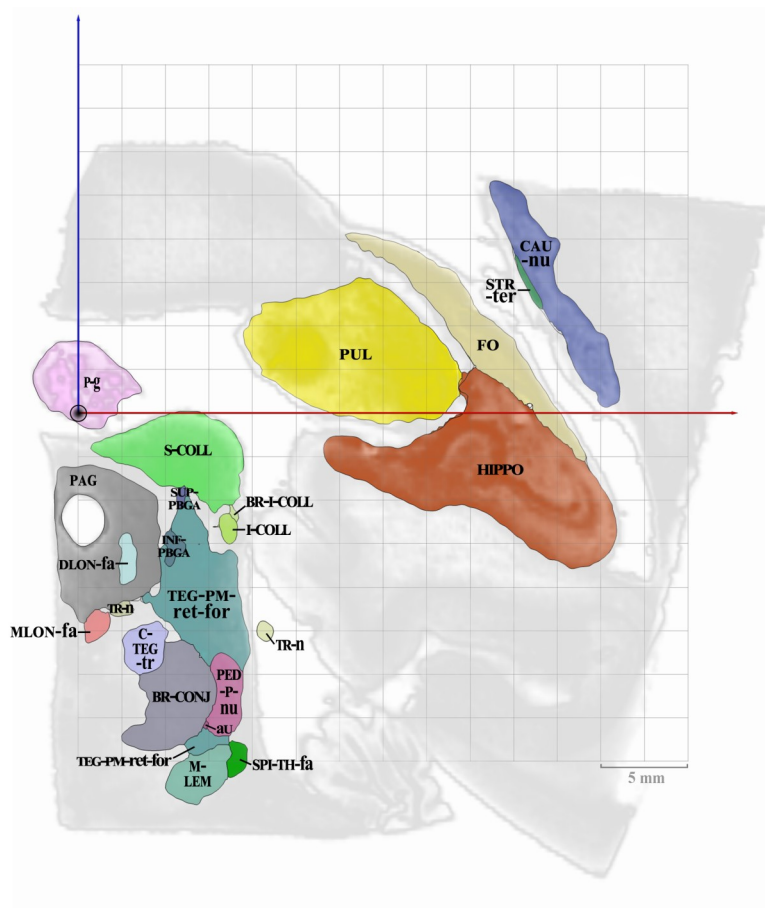
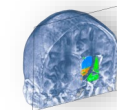
Coronal MRI slice 27 mm rear to AC





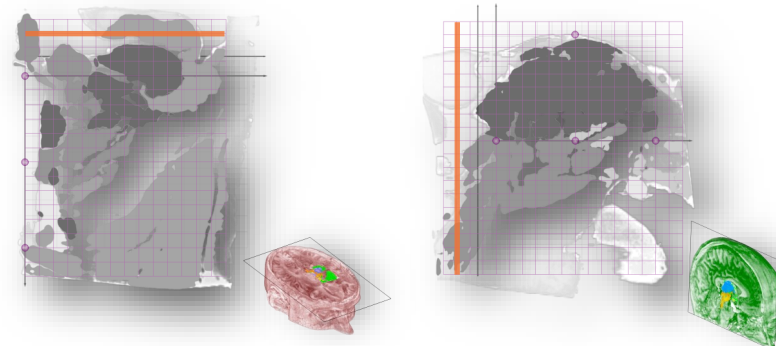
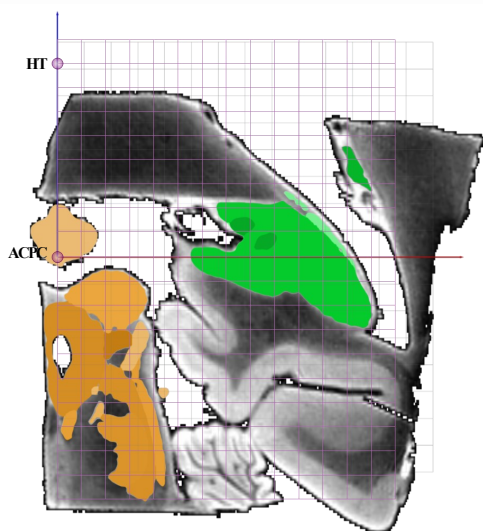
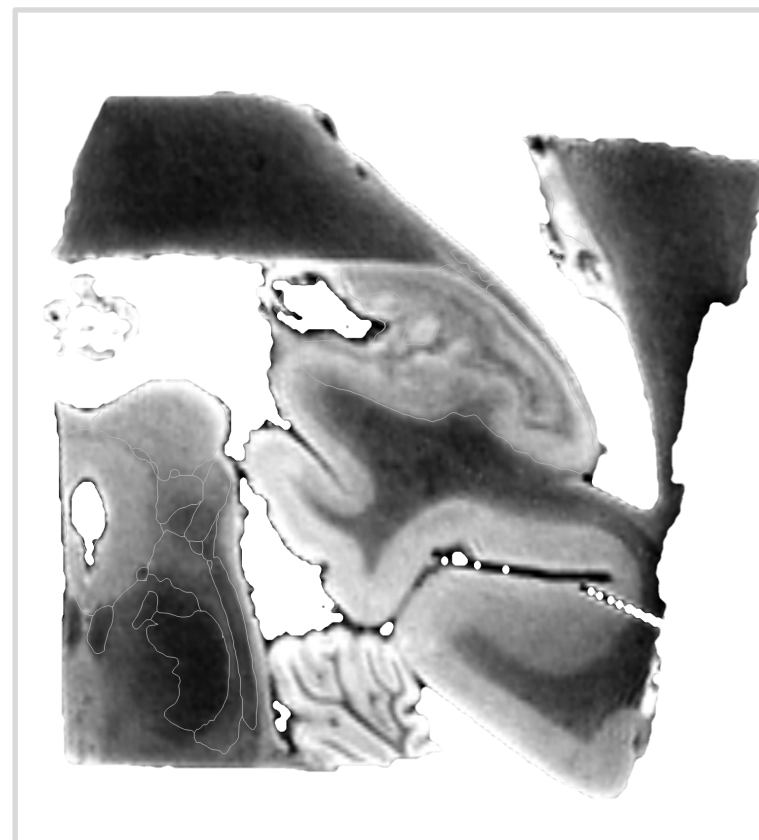
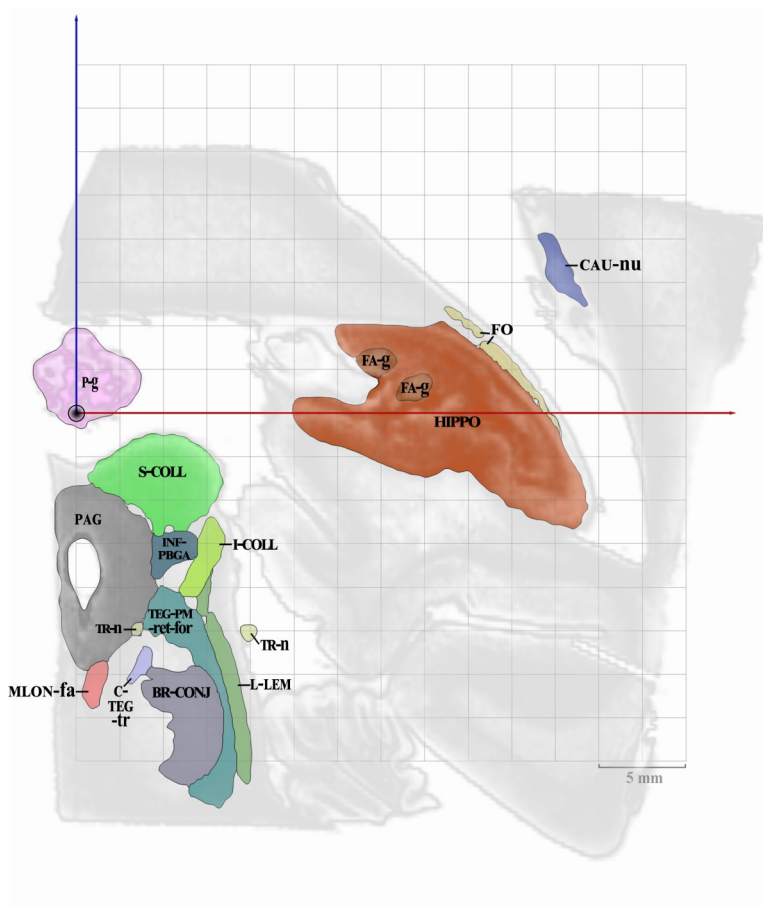
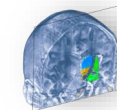
CR14

Coronal MRI slice 31.4 mm rear to AC



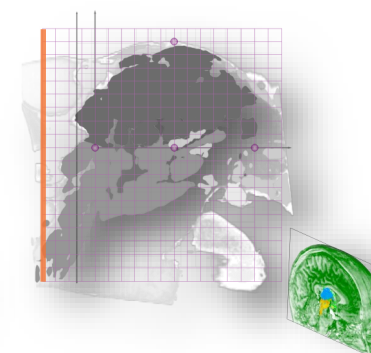
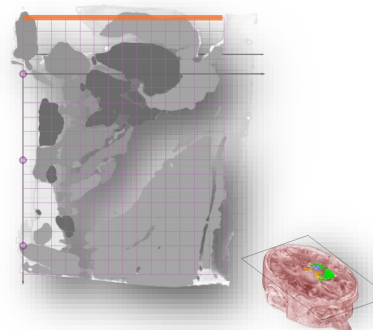
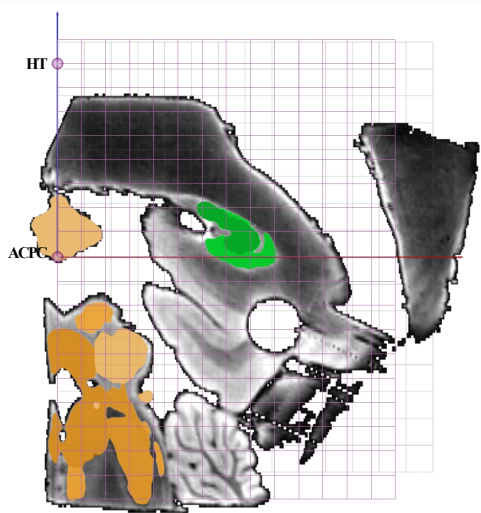
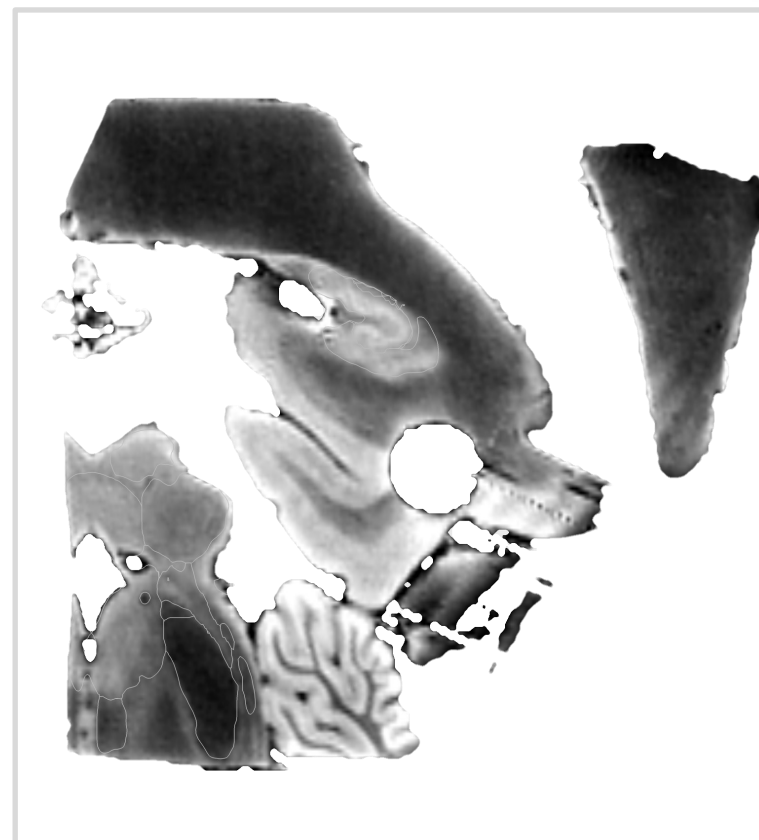
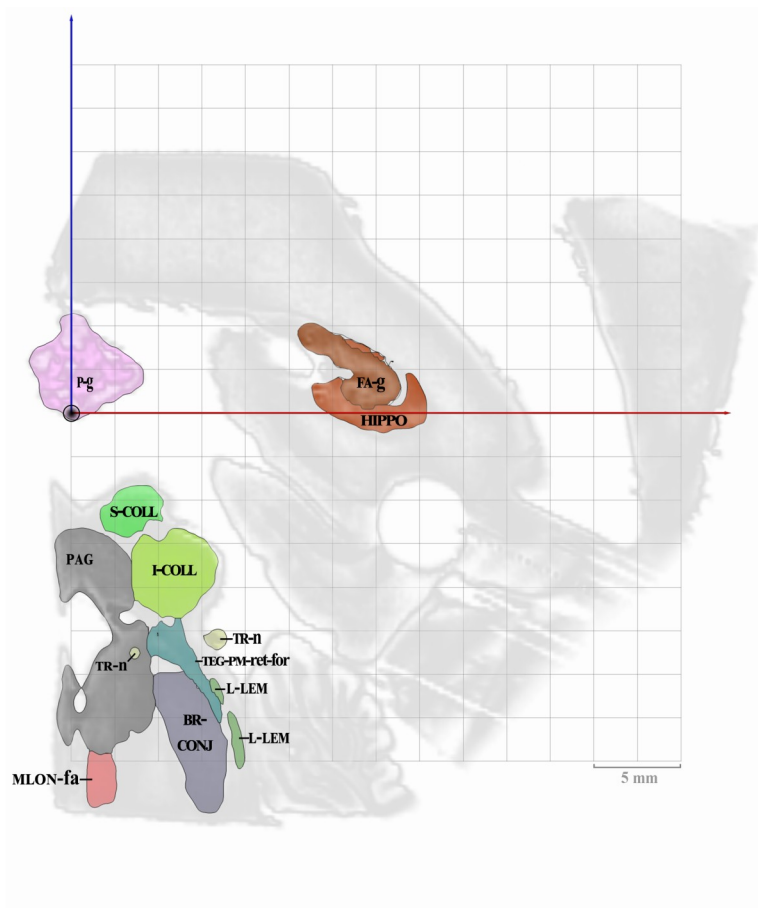
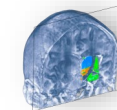
CR15

Coronal MRI slice 33.7 mm rear to AC



CR16

Coronal MRI slice 35.9 mm rear to AC

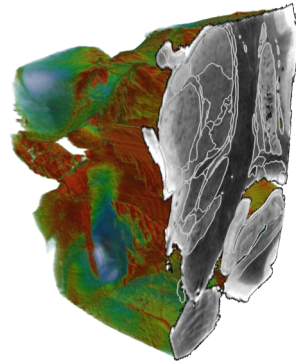


MRI ATLAS OF THE HUMAN DEEP BRAIN

Jean-Jacques Lemaire, MD, PhD, neurosurgeon, University Hospital of Clermont-Ferrand,
Université Clermont Auvergne, CNRS, SIGMA, France



This work is licensed under the Creative Commons Attribution-NonCommercial-NoDerivatives 4.0 International License. To view a copy of this license, visit <http://creativecommons.org/licenses/by-nc-nd/4.0/> or send a letter to Creative Commons, PO Box 1866, Mountain View, CA 94042, USA.



19 CORONAL PLATES

February 2019