



HAL
open science

Small time and space measurements of the mean rainfall rate made by a gage network and by a dual polarization radar

M. Messaoud, Yves Pointin

► **To cite this version:**

M. Messaoud, Yves Pointin. Small time and space measurements of the mean rainfall rate made by a gage network and by a dual polarization radar. *Journal of Applied Meteorology*, 1990, 29 (9), pp.830-841. 10.1175/1520-0450(1990)0292.0.CO;2 . hal-01987730

HAL Id: hal-01987730

<https://uca.hal.science/hal-01987730>

Submitted on 2 Feb 2021

HAL is a multi-disciplinary open access archive for the deposit and dissemination of scientific research documents, whether they are published or not. The documents may come from teaching and research institutions in France or abroad, or from public or private research centers.

L'archive ouverte pluridisciplinaire **HAL**, est destinée au dépôt et à la diffusion de documents scientifiques de niveau recherche, publiés ou non, émanant des établissements d'enseignement et de recherche français ou étrangers, des laboratoires publics ou privés.

Small Time and Space Measurements of the Mean Rainfall Rate Made by a Gage Network and by a Dual-Polarization Radar

MOHAMED MESSAOUD AND YVES B. POINTIN

LaMP/OPGC (UA/CNRS), Université Blaise Pascal, Clermont-Ferrand, France

(Manuscript received 23 May 1989, in final form 7 December 1989)

ABSTRACT

Small time (1 to 15 min) and space (0.5 to 1.5 km) measurements of the mean rainfall rate have been made within 10 km from a dual-polarization radar, during several widespread or convective precipitation events. At first, the time and space characteristic scales of the gage and of the radar data are evaluated in order to find the minimum time interval Δt and spatial resolution Δx for which the mean rainfall rate values have a large enough statistical significance. Then the quantitative comparisons are made between the mean rainfall rate R_G deduced from the gage data and that deduced from the radar measurements, either without (R_Z) or with (R_D) using the differential reflectivity Z_{DR} values.

1. Introduction

Urban hydrology of most big metropolises requires the real-time estimation of the mean precipitation over small drain catchments, of areas of a few tens of square kilometers, with a time resolution Δt better than 5 to 10 minutes. Although a raingage network may be difficult and very expensive to set up and operate in these big cities, it can give the direct rainfall rate measurement with the required resolution, provided that its density is large enough (Huff 1970). Indeed, the gage spacing must be smaller than the spatial variation of the rainfall (Silverman et al. 1981) for the required time interval Δt of the estimation. Therefore, for very short time intervals, the gage spacing must be smaller than the size of convective cells; namely, it should be of the order of one kilometer. In the experiment described in the next section, 14 one-minute resolution raingages have been set up over a 25 km² area, giving a mean gage spacing of 1.5 km. The first goal of this paper is to evaluate the smallest time interval Δt and spatial resolution Δx (Eddy 1976) for which the true mean rainfall rate R_m can be "significantly" estimated from the gage data. This evaluation, and the criteria used, are described in the third section. The maps of the mean rainfall rate field, interpolated from the gage data, are discussed in section 4.

The time and space resolutions required by urban hydrology can also be provided by meteorological radars that lead to an estimation of the rainfall rate from the reflectivity measurements. Numerous works have

been devoted to the radar estimation of the rainfall rate (Wilson and Brandes 1979; Doviak 1983; Barnston and Thomas 1983; Austin 1987; Creutin et al. 1988, among many others) for time intervals generally greater than 1 hour. For short time intervals, however, the reflectivity Z of the cloud is only weakly related to the rainfall rate, because the drop size distribution $N(D)$ shows quite a large time variability (Seliga et al. 1986; Chandrasekar and Bringi 1987; Illingworth et al. 1987). A dual polarization radar (Seliga and Bringi 1976) measures, for the same cloud volume, two independent reflectivities, namely the horizontal reflectivity Z_H , similar to the reflectivity Z measured by any conventional radar, and the differential reflectivity $Z_{DR} = Z_H - Z_V$, which is mainly related to the mean diameter of the drop size distribution. Due to this supplementary information on the drop size distribution $N(D)$, theoretical and experimental works (Seliga and Bringi 1976; Hall et al. 1980; Seliga et al. 1981; Bringi et al. 1982; Goddard et al. 1982; Jameson 1983; Ulbrich and Atlas 1984; Feingold and Levin 1987; Sachidananda and Zrnić 1987) have shown that a better estimate of the rainfall rate can be obtained by using the horizontal Z_H and the differential Z_{DR} reflectivities than by using the reflectivity Z alone. However, most dual polarization measurements made so far have been compared to individual raingage measurements for very short time intervals (a few minutes). These comparisons suffer from the fact that both measurements have very different sampling volumes and may not have the same statistical significance. Therefore, the other goal of this paper is to compare, for the shortest time intervals Δt and highest spatial resolutions Δx available from the gage network, the mean rainfall rate R_G deduced from the gage data to that deduced from the radar measure-

Corresponding author address: Dr. Yves Pointin, LaMP/OPGC, 12, Avenue des Landais, 63000 Clermont-Ferrand, France.

ments, either without (R_Z) or with (R_D) using the differential reflectivity Z_{DR} . The computation of the field values of the mean equivalent rainfall rate derived from the radar data is described in section 5, and the quantitative comparisons are made in section 6.

2. Data description

The present experiment has been conducted in the vicinity of Clermont-Ferrand (France) between May 1985 and August 1986. During this period, 48 precipitation events, including some very intense convective hailstorms (Husson et al. 1989) have been fully recorded.

a. Raingage data

The 14 one-minute tipping bucket raingages have a 1000 cm² (2000 cm² for two gages) sampling cross-sectional area, giving a water height resolution of 0.2 mm (0.1 mm). The tipping number is electronically recorded every minute and the time accuracy is of the order of a few seconds. As shown in Fig. 1, the network covers a 25 km² area, lying between 5 and 10 km from the radar. In the following the rainfall fields are interpolated inside the solid line square in Fig. 1 and the comparisons are made within the dashed line square, in order to avoid extrapolating the gage data. For each selected time interval Δt (5, 15, 30 and 60 min), and for each gage located at the point M_i , the mean rainfall rates $R(M_i, t_k)$ are computed for all time steps $t_k = (k - 1)\Delta t + t_0$; $k = 1, \dots, N$, as an average over the corresponding time interval Δt centered around t_k . An example of the resulting time series is shown in Fig. 2 for the mean rainfall rates measured by three different gages during a convective storm that developed on 3 July 1986. On this figure a constant value, depending upon the gage number, has been added to the rainfall rate values in order to vertically separate the curves.

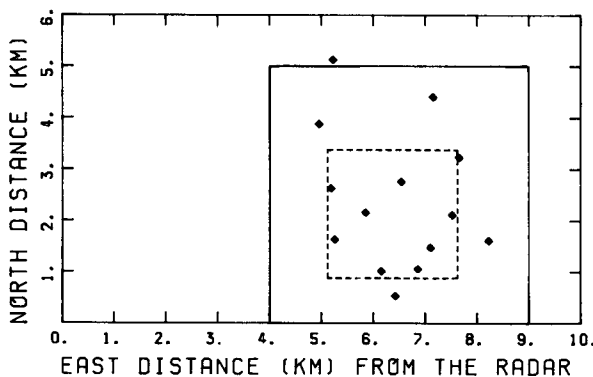


FIG. 1. Location of the 14 one-minute raingages with respect to the radar position. The rainfall fields are later drawn within the solid line square and the quantitative comparisons are made within the dashed line square, in order to avoid extrapolating the gage data.

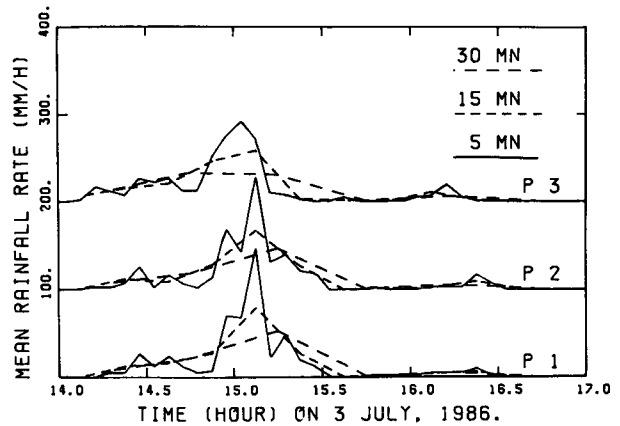


FIG. 2. Mean rainfall rates R_G , averaged over different time intervals ($\Delta t = 5, 15$ and 30 min), measured by three different gages on 3 July 1986, from 1400 to 1700 UTC. A constant value has been added to the rainfall rate values in order to vertically separate the curves corresponding to the different gages.

The peak values of the 5, 15 and 30-minute means vary, depending on the gage, from 44 to 147, from 32 to 79, and from 17 to 53 mm h⁻¹, respectively. On this day, significant precipitations have lasted for more than one hour, giving a total water height between 26 and 45 mm, depending upon the gage position. The displacement velocity of the storm is estimated, from successive radar images, to be 3.5 and 1.5 m s⁻¹ toward the east and the south, respectively. Some hailstones have also been recorded at the ground (Husson et al. 1989) during this day.

b. Dual polarization radar data

The ANATOL radar (Pointin et al. 1988) is a 10-cm dual polarization radar (Doviak and Zrnić 1984) that has a 1.8 degrees half power beam-width antenna and that rotates at about 8° s⁻¹ (i.e., 1.3 rpm). The copolar return powers of the horizontally and vertically polarized pulses are averaged over their corresponding 64 alternative pulses and over four subgates within each gate. Every 0.256 s, the values of the time, azimuth, elevation, and of the horizontal and vertical reflectivities in up to 1024 gates of 120 m width, are recorded on a magnetic tape. The zero value of Z_{DR} has been regularly checked by recorded data in raining conditions with a vertically pointed antenna. The total gain of the Z_H measurements has been obtained several times by integrating the equivalent rainfall rate, deduced from the radar data, and the raingage data recorded during one or two days in heavy widespread rainfalls (up to 250 mm in 48 h).

In this experiment the data have been almost continuously recorded, either during PPI scans made at a constant low elevation (1 to 6 degrees), or during volume scans, made above the basin at elevation varying by 1.8-degree steps at each sweep, between 1 and 30

degrees, and lasting about 6 minutes per volume scan. In the estimation of the radar derived rainfall rate only the data recorded below 1.5 km above the ground have been used, and most of them have been recorded below 1 km. Since the biggest raindrops take less than 3 minutes to fall from the top of the scanned volume to the ground and since the time interval Δt used in the comparison is greater than 15 minutes (section 3), no correction has been made for the horizontal advection. Also, during this fall, important modifications of the drop size distribution could be induced by size sorting, by evaporation, by collisions, and so on (Austin 1987). However, no correction has been made since most of the radar data have been recorded below 1 km above the raingages.

3. Time and space scale of rainfall fields

For each selected time interval Δt (5, 15, 30 and 60 min), the intercorrelation coefficient $\rho_r(M_i, M_j)$ has been computed as a function of the time lag τ , from the two time series of the mean rainfall rate values $R(M_i, t_k)$ and $R(M_j, t_k)$ of the two gages located at points M_i and M_j , respectively. The time lag τ enables us to take into account the horizontal advection of the precipitating cloud from the first gage to the other one. The computation of this intercorrelation coefficient has been made either for each precipitation event, or over a whole month. In order to avoid the artificial increase of this coefficient due to long no-precipitation periods, a joint rain indicator δ_k has been introduced. For each lag time τ and for each gage pair (i, j) , it is defined as:

$$\delta_k = \begin{cases} 0, & \text{if } R(M_i, t_k) = R(M_j, t_k + \tau) = 0 \\ 0, & \text{if } t_k < t_0 \\ & \text{or } (t_k + \tau) > T = t_0 + (N - 1)\Delta t \\ 1, & \text{else.} \end{cases} \quad (1)$$

By using this rain indicator, the intercorrelation coefficient $\rho_r(M_i, M_j)$ is computed only for precipitating periods by:

$$\rho_r(M_i, M_j) = \frac{1}{N_T} \frac{\sum_{k=1}^N [R(M_i, t_k)\delta_k - \mu(M_i)]}{\sigma(M_i)} \times \frac{[R(M_j, t_k + \tau)\delta_k - \mu(M_j)]}{\sigma(M_j)}, \quad (2)$$

where the mean and the variance values used in the previous equation are accordingly given by:

$$\mu(M_i) = \frac{1}{N_T} \sum_{k=1}^N R(M_i, t_k)\delta_k, \quad (3)$$

$$\sigma^2(M_i) = \frac{1}{N_T} \sum_{k=1}^N [R(M_i, t_k)\delta_k - \mu(M_i)]^2, \quad (4)$$

and where N_T is the total number of time steps used in the evaluation of the intercorrelation coefficient:

$$N_T = \sum_{k=1}^N \delta_k. \quad (5)$$

An example of the intercorrelation coefficients, computed for the different time intervals Δt as a function of the time lag τ , is shown in Fig. 3 for two gages; one of these gages is located at a distance of 2.88 km in an east-northeast direction from the other one. The rainfall data used for this figure are relative to the month of June 1986, during which several widespread and a few convective events have been advected over the area, generally toward the east. Figure 3 shows that, for a given time interval Δt , the intercorrelation coefficient $\rho_r(M_i, M_j)$ becomes less than 0.2 for time lags τ greater than 60 minutes, and it takes its maximum value for a null time lag, except for the 5-minute time interval. Furthermore, for a given time lag τ , it increases with the time interval Δt . These properties are verified for all gage pairs in the network, and result from the fact that a time of 15 minutes appears to be much less than the time needed for a precipitating cloud to cross the 5 km wide area. Therefore, the smallest time interval Δt available for this network (Eddy 1976) can be searched for only through a study of what we call the neg-correlation coefficient $\omega(M_i, M_j)$, defined from the zero-lag intercorrelation coefficient $\rho_0(M_i, M_j)$ by

$$\omega(M_i, M_j) = 1 - \rho_0(M_i, M_j). \quad (6)$$

The interest in this neg-correlation stems from the fact that, for ergodic, homogeneous, and stationary fields $Z(M)$, this neg-correlation is equal to the ratio, by the field variance, of the semivariogram $\gamma(M_i, M_j)$

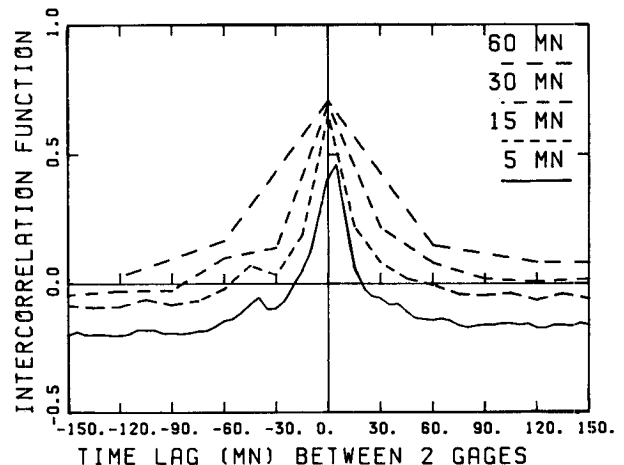


FIG. 3. Intercorrelation function $\rho_r(M_i, M_j)$ versus the time lag τ for the mean rainfall rate R_G , averaged over different time intervals ($\Delta t = 5, 15, 30$ and 60 min), for two gages located at the points M_i and M_j , which are separated by a distance of 2.88 km, in an east-northeast direction.

(Matheron 1971; Creutin and Obled 1982), also called the structure function, and defined by the mathematical expectation of the squared difference between the values at the two points:

$$\gamma(M_i, M_j) = \frac{1}{2} E\{[Z(M_i) - Z(M_j)]^2\}. \quad (7)$$

Despite the fact that, particularly for the short time intervals, and for the small number of raingages used in this study, the observed rainfall field can hardly be considered as ergodic, homogeneous or stationary, we shall use the neg-correlation function in place of the semivariogram in the kriging interpolation technique (Matheron 1971; Creutin and Obled 1982) described in the next section.

The neg-correlation values for every gage pairs in the network are plotted versus the distance between the corresponding gages in Figs. 4 and 5, for the rainfall rate data relative to the months of June and April 1986, respectively. In these figures the different symbols indicate the time interval Δt used in the computation of the correlogram values. Despite an appreciable scattering of the points, which decreases with the time interval Δt and decreases for a less convective situation (April in Fig. 5 compared to June in Fig. 4), the data points are clustered along the curve of the neg-correlation function $\omega_s(h, \Delta t)$, defined, for each time in-

terval (Eddy 1976), only as a function of the distance between the two gages. Indeed, for this small network, no clear dependence upon the relative gage orientation has been found, even for a 5-minute time interval for which the influence of the advection effects should have been the largest. For each time interval the coefficients a , b and h_p of a spherical function have been nonlinearly adjusted (Lybanon 1985):

$$\omega_s(h, \Delta t) = \begin{cases} a + (b - a) \left[\frac{3}{2}(h/h_p) - \frac{1}{2}(h/h_p)^3 \right], & \text{if } h < h_p \\ b, & \text{otherwise,} \end{cases} \quad (8)$$

where h_p is the range value beyond which the correlation takes the constant value b , and a represents a discontinuity for short distances which reflects a white noise effect. Indeed, the comparison of collocated gages shows very large differences for short time intervals (Woodley et al. 1975), mainly due to very small scale inhomogeneities (turbulence). This white noise effect is generally larger for smaller time intervals and for widespread conditions than for convective ones. This last property results from the fact that, for widespread precipitations, the average tipping number is smaller

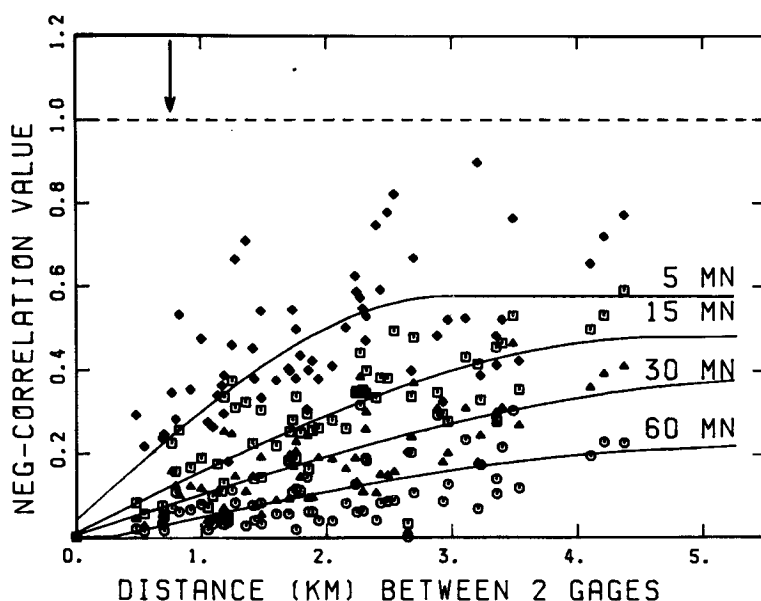


FIG. 4. Neg-correlation $\omega(M_i, M_j) = 1 - \rho_0(M_i, M_j)$ coefficients between the mean rainfall rate R_G time series recorded during June 1986 by all gage pairs (M_i, M_j) of the network, plotted versus the distance between the two gages of the pair. The different symbols refer to different time intervals Δt ($\diamond = 5$ min, $\square = 15$ min, $\triangle = 30$ min, $\circ = 60$ min) over which the mean rainfall rates are averaged. The solid lines represent the neg-correlation functions $\omega_s(h, \Delta t)$ adjusted from Eq. (8) and drawn versus the gage distance h , for the different time intervals Δt , and the dashed line indicates the null correlation. The vertical arrow at the top of the figure points to half the mean distance between the gages of the network.

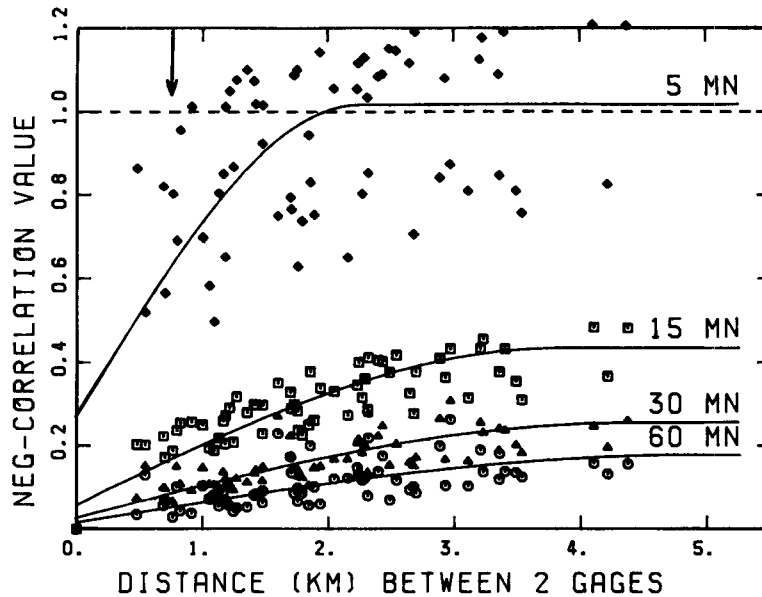


FIG. 5. The same as Fig. 4 for the gage data recorded during April 1986, corresponding to more widespread situations.

and the sampling errors are relatively larger (Woodley et al. 1975).

The large scattering of the points around the neg-correlation function may induce large errors in the spatial interpolation of the gage data, since each gage data is then representative of an area that is not well defined. This is especially true for the 5-minute data, which also show very small correlations (less than 0.70, corresponding to $\omega > 0.30$) for distances (0.75 km) of the order of half of the mean distance (1.5 km) between gages in this network. This implies that, for this time interval, the data of any raingage cannot be statistically extended to the area that each gage is supposed to cover. However, for time intervals greater than 15 minutes, the correlation values are above 0.8 (corresponding to $\omega < 0.20$) for distances shorter than half the network mean distance, suggesting that spatial interpolation may be statistically valid for these largest time intervals. As shown in Figs. 4 and 5, for hourly data, the correlation remains high for larger distances than for the 15-minute data, suggesting that the mean distance between gages could be of the order of 10 km, at least for these precipitation conditions. This implies that the interpolation of hourly gage data may be statistically significant only if the gage density is above 1 gage per 78 square kilometers.

4. Spatial interpolation of the raingage data

For each time interval the gage data are spatially interpolated by using the kriging interpolation technique (Matheron 1971; Creutin and Obled 1982). The interpolated value $R_G(M, t_k)$ at any point M is a linear

combination of the N measured values $R(M_i, t_k)$ at all gage points M_i :

$$R_G(M, t_k) = \sum_{i=1}^N \lambda_i R(M_i, t_k). \quad (9)$$

The weighting coefficients λ_i are the elements of the N vector Λ , which is calculated from the matrix system:

$$\begin{pmatrix} \Gamma & E \\ E^T & 0 \end{pmatrix} \begin{pmatrix} \Lambda \\ \mu \end{pmatrix} = \begin{pmatrix} \Gamma_0 \\ 1 \end{pmatrix}, \quad (10)$$

where $E^T = (1, \dots, 1)$ is the transposed of the E vector (N unitary vector) and μ is a scalar Lagrange multiplier that is introduced in order to ensure that the interpolated value is statistically unbiased. The elements of the N vector Γ_0 (of the $N \times N$ matrix Γ , respectively) are equal to the neg-correlation between the interpolating point M and the gage point M_i ; i.e., $\omega_s(\|\overrightarrow{MM_i}\|, \Delta t)$ (to the neg-correlation between the gage stations M_i and M_j ; i.e., $\omega_s(\|\overrightarrow{M_iM_j}\|, \Delta t)$, respectively). The interpolated value $R_G(M, t_k)$ is computed at every center points of a regular grid which is included in the full line square drawn in Fig. 1, and with grid sizes $\Delta x = \Delta y$.

An example of the resulting field of the mean rainfall rate R_G is shown in Fig. 6 for the 15-minute time interval between 1500 and 1515 UTC on 3 July 1986 and for grid sizes $\Delta x = \Delta y = 0.25$ km. The maximum rainfall rate of 80 mm h^{-1} is reached at about 7.1 km east and 1.5 km north of the radar, where the raingage number 6 is located, and the minimum value of 7.3 mm h^{-1} is reached on the north of the area. This in-

terpolated 15-minute mean rainfall field has a characteristic length scale greater than half the mean distance of the gage network. This results partly from the characteristic length of the true mean rainfall field and partly because of the smoothing effect of the neg-correlation function, particularly due to the discontinuity value a of the white noise effect. Indeed, this discontinuity value a represents a measure of the uncertainty of the point value. In order to decrease this uncertainty the kriging technique replaces this point value by a weighted mean between the value of the neighboring gages, and the value of the considered gage. Therefore, the larger this discontinuity value a , the smoother the mean field. The resulting characteristic length of the interpolated field is the determining factor for the choice of the interpolating grid sizes Δx and Δy . For the time interval Δt of 15 minutes, a choice of 0.5 km instead of 0.25 km gives almost the same interpolated field, while for a time interval of 1 hour, the grid size can be as large as 1 km without losing any details.

5. Spatial average of the radar data

Numerous authors have proposed $R-Z_H$ relationships of the form:

$$Z_H = aR_Z^b, \tag{11}$$

where R_Z (mm h^{-1}) is the equivalent rainfall rate derived from the radar measured reflectivity factor Z_H ($\text{mm}^6 \text{m}^{-3}$). Different relationships should be used in widespread and in convective conditions (see Doviak 1983, or Austin 1987, among others, for discussions). In the following treatments, the chosen coefficients are, with the used units, $a = 200$, $b = 1.6$ for widespread conditions, and $a = 486$, $b = 1.37$ for convective conditions. Similarly, several authors have proposed $R-(Z_H, Z_{DR})$ relationships, either derived from theoretical or from disdrometer measured drop spectra (Seliga et al. 1981; Brangi et al. 1982; Ulbrich and Atlas 1984; Feingold and Levin 1987; Sachidananda and Zrnić 1987), assuming some form of the relationship between the raindrop axial ratio and the drop diameter (Pruppacher and Pitter 1971). In order to avoid a singular behavior for small Z_{DR} values, we use the following relationship, very similar to that used by Seliga et al. (1981), for the equivalent rainfall rate R_D derived from the radar measured horizontal Z_H and differential Z_{DR} reflectivities:

$$R_D = \frac{aZ_H^b}{c + Z_{DR}^d}, \tag{12}$$

where the coefficients are $a = 0.0033$, $b = 0.98$, $c = 0.55$ and $d = 2.33$, when R_D , Z_H and Z_{DR} are expressed in mm h^{-1} , $\text{mm}^6 \text{m}^{-3}$ and dB, respectively. These coefficients have been nonlinearly adjusted (Lybanon 1985) by using Pruppacher and Pitter (1971)

raindrop axial ratio relationship and 1419 drop spectra measured by two disdrometers every 5 minutes, during the most intense precipitation events that have appeared in all the ANATOL experiments of the last 4 years. This relationship adjusts very well (maximum and mean errors of 4.5 and 0.3 mm h^{-1} , respectively) the rainfall rate values directly computed from each spectra, for values of up to 50 mm h^{-1} . However, inside the clouds, the raindrop oscillation may change the axial ratio relationship (see Chandrasekar et al. 1988 for a complete discussion) and this would modify the values of the coefficients in Eq. (12) to $a = 0.0025$, $b = 0.97$, $c = 0.59$ and $d = 2.07$ for the Chandrasekar et al. (1988) relationship. Due to the small differences between these two sets of coefficients, the former set has been used.

In order to decrease the noise level, the measured values of the horizontal Z_H and differential Z_{DR} reflectivities are, for each recorded sequence, specifically filtered as functions of the radial distance. This special filter is based on the radial variations, obtained with a 0.12 or 0.24 km resolution, of the differential reflectivity Z_{DR} . These variations are low for cloud dominant measurements and high for ground clutter ones. The use of a threshold value for these variations is a very efficient way to detect the ground echo data that are not dominated by cloud values ($0 \leq Z_{DR} \leq 5$ dB); the detected ground reflectivities Z_H and Z_{DR} are then set equal to zero. The filtered radar data are converted, by using either Eq. (11) or Eq. (12), in equivalent rainfall rate R_Z or R_D , which are accumulated over all measurements made during the corresponding time interval Δt , and above each grid mesh of sizes $\Delta x = \Delta y$. It has been found that, for about $(0.3 \text{ km})^3$ radar sampling volume, the time series of the equivalent rainfall rate above a fixed point have a time scale of about 10 minutes. This means that an instantaneous radar measurement, made at short distance, is statistically representative of a one-minute average (correlation above 0.9), and that a perfect radar time coverage (RTC) of 100% of the basin can only be obtained if the antenna rotates at more than 1 rpm, as the ANATOL antenna does. From the recorded data, this RTC is estimated by the relative duration of the union of every one-minute interval centered at each instant that the radar beam passes over a fixed given point. Due to the scanning procedures used in the data collection, and to some necessary interruptions, the radar time coverage for the 15-minute time intervals varies between 35% and 75%. This RTC could be increased by taking into account the horizontal displacement of the clouds (Austin 1987) and interpolating between the radar images, but this has not yet been tested on the present dataset.

Examples of the resulting field of the mean equivalent rainfall rate, deduced from the radar data by using Eqs. (11) and (12), are shown in Figs. 7 and 8 respec-

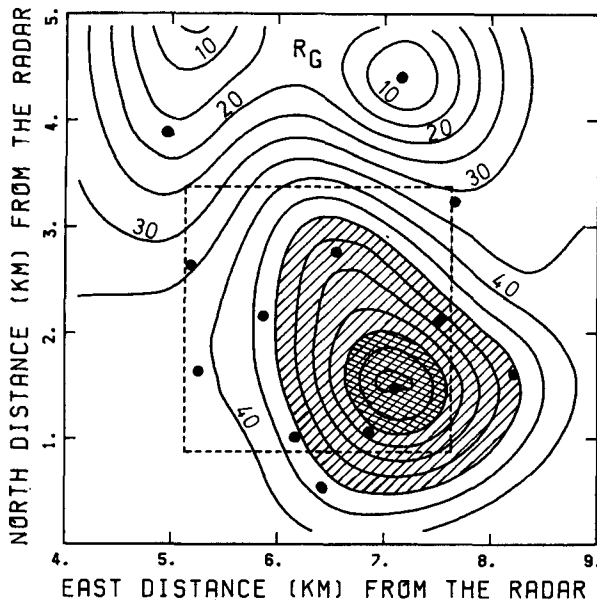


FIG. 6. Isolines of the mean rainfall rate R_G interpolated from the 15-minute averaged gage data. The isolines are drawn every 5 mm h^{-1} and the area in which R_G is greater than 50 mm h^{-1} is hatched. The small circles indicate the gage position and the dashed line square encloses the area in which the quantitative comparisons are made.

tively, for the same 15-minute time interval between 1500 and 1515 UTC on 3 July 1986, and for grid sizes $\Delta x = \Delta y = 0.25$ km, as in Fig. 6. In Fig. 7 the maximum equivalent rainfall rate R_Z of 74 mm h^{-1} is reached at about 7.9 km east and 1.2 km north of the radar (out-

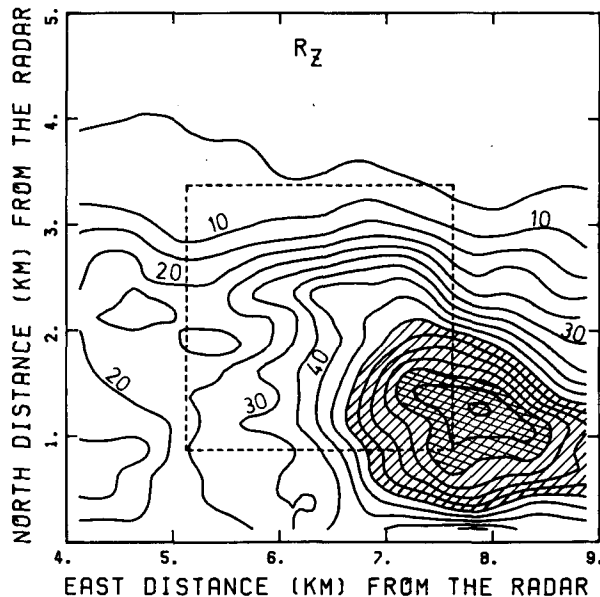


FIG. 7. The same as Fig. 6 for the mean rainfall rate R_Z deduced through a $R-Z$ law from the radar data, i.e., brought forward without using the Z_{DR} values.

side of the gage polyhedral), as compared to the corresponding 7.1 and 1.5 km for the location of the R_G maximum in Fig. 6. Similarly, the area in which the mean rainfall rate is above 50 mm h^{-1} is much smaller in Fig. 7 than in Fig. 6, and the minimum values are also smaller. These differences are respectively due to the fact that the gage network has probably not recorded the true maximum rainfall rate, and to the fact that the $R-Z_H$ relationship can lead to erroneous estimations. These estimation errors are quantitatively analyzed in the next section. Further qualitative comparisons show that the R_Z field in Fig. 7 has a smaller characteristic length scale than the R_G field in Fig. 6. It has been checked (Messaoud 1989) that the use of a coarser grid ($\Delta x = \Delta y = 0.5$ km) gives a very similar mean rainfall rate R_Z field (not shown) to that of Fig. 7. This suggests that the spatial average over the area of sizes $\Delta x = \Delta y = 0.25$ km has induced no significant smoothing effects on the mean rainfall rate R_Z field in Fig. 7. This implies that its length scale should be close to that of the true 15-minute mean rainfall rate R_m field. On the other hand, the larger length scale of the R_G field in Fig. 6 means that, even though the gage data provide a statistically significant estimate of the mean field, as shown in section 4, the gage density is not high enough to give the required spatial resolution of the true 15-minute mean R_m field.

When the values of the differential reflectivity Z_{DR} are used, as in Fig. 8, the maximum equivalent rainfall rate R_D reaches 84 mm h^{-1} at about 7.5 km east and 1.2 km north of the radar and the area in which the

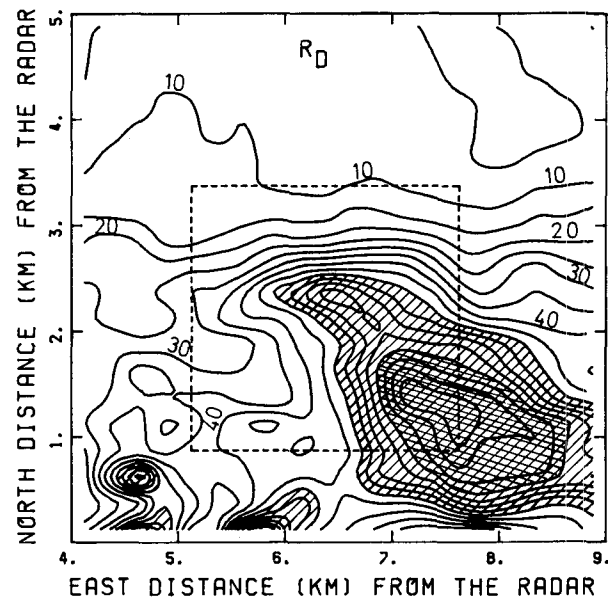


FIG. 8. The same as Fig. 6 for the mean rainfall rate R_D deduced through a $R-Z_H$, Z_{DR} law from the dual polarization radar data, including the differential reflectivity Z_{DR} values.

mean rainfall rate is above 50 mm h^{-1} is larger than the area of the R_Z field, without covering the corresponding area of the measured R_G field. This results from the fact that, for a given horizontal reflectivity Z_H value, a lower value than usual, of the differential reflectivity Z_{DR} , induces a larger value of R_D than of R_Z . This fact explains also why a small convective cell, in which the differential reflectivity Z_{DR} is very low, shows up by a large value of R_D on the left bottom corner in Fig. 8, outside of the raingage polyhedral. Because of the large spatial variability of the differential reflectivity Z_{DR} , induced by all the microphysical processes, the R_D field in Fig. 8 has a slightly smaller characteristic length scale than the R_Z field in Fig. 7, and a much smaller one than the R_G field in Fig. 6.

These qualitative comparisons show that the precipitation pattern is reasonably well reproduced by the three mean rainfall rate estimates R_G , R_Z and R_D , even though the gage network may not have recorded the true maximum rainfall rate, located away from a raingage position, as suggested by the analysis of the radar data. Furthermore, in this experiment, the radar data, because of its good spatial resolution, can provide estimated rainfall rate R_Z or R_D fields with a smaller characteristic length scale than that of the R_G field deduced from the gage data, despite the small mean distance (1.5 km) of the gage network.

6. Quantitative comparisons

For a given time interval Δt , more precise quantitative comparisons are made by plotting either the R_Z values of the mean rainfall rate estimated from the radar data by using Eq. (11); i.e., without using the Z_{DR} values, or the R_D values estimated from the radar data by using Eq. (12), including the Z_{DR} values, versus the corresponding R_G values of the mean rainfall rate estimated from the gage data. These comparisons are obtained, for each time step t_k of the precipitation events, between the corresponding mean values over each grid cell of area $\Delta x \cdot \Delta y$ located within the dashed line square in Fig. 1. This restriction avoids extrapolating the gage data outside of the raingage polyhedral. These comparisons for the R_Z and R_D values are illustrated by Figs. 9 and 10, respectively, for the same 15-minute time interval between 1500 and 1515 UTC 3 July 1986 as used in Figs. 6, 7 and 8. In Figs. 9 and 10, the circles correspond to the data of each grid cell containing a raingage, for which the interpolation and the smoothing of the gage data are minimum, and the dashed line indicates the least-squares linear relationship between the gage and the radar values for all grid cells.

In this example, as shown in Fig. 9, most of the R_Z values are below the R_G values, except for rainfall rates of the order of 70 mm h^{-1} . The correlation coefficient ρ , given among other parameters in Table 1 for the

different time steps of different days, is 0.89 in this example, and the root mean square error σ (with respect to the least-squares relationship) is 8.6 mm h^{-1} . This error could only be obtained if an appropriate $R-Z_H$ relationship, similar to Eq. (11), is used, but the coefficients of this relationship would be different for each time step, as shown in Table 1. When using a fixed $R-Z_H$ relationship, although different for widespread and for convective conditions, the estimation error is of the order of the root mean square difference E_{GZ} between the gage value R_G and the radar derived value R_Z . This mean difference E_{GZ} is always greater than the root mean square error σ , and is above 22 mm h^{-1} in this case. The circles in Fig. 9, corresponding to grid cells containing a raingage, have a similar scattering than the other points that result from interpolated values. This suggests that the mean difference E_{GZ} is mainly due to variations in the drop size distribution $N(D)$, and not to the interpolation process.

The comparison of the raingage R_G and the radar R_Z values from the other time steps, shown in Table 1, indicates that for a time interval Δt of 15 min, the correlation coefficient is above 0.7 when the maximum rainfall rate is large (above 5 mm h^{-1}) and when the radar time coverage is above 60%. For small maximum rainfall rates the measurement errors due to the raingage tipping discretization (0.8 mm h^{-1} for a 15-minute time interval) dominate the root mean square error σ . On the other hand, a small radar time coverage, particularly if the radar data are not evenly distributed over the time interval Δt , may prevent the radar from recording some intense transient precipitation events that last only a few minutes, as happened on 3 July 1986. For the analyzed dataset, the mean difference E_{GZ} is always above 24% of the maximum mean rainfall rate during the corresponding time step, and may reach 30% when the radar coverage is not large enough. As shown in Fig. 9, the pointwise errors are mainly below 100%, but they may be as large as 500% in some cases.

The comparison of the raingage R_G values and the R_D values, deduced from the radar data by using Eq. (12); i.e., including the differential reflectivity Z_{DR} values, is illustrated in Fig. 10, for the same 15-minute time interval as in Figs. 6 to 9. In this figure the points are closer to the main diagonal, with a larger number above this line than in Fig. 9. This fact is confirmed by the comparison of Tables 1 and 2, which shows that for all time steps t_k for which the radar time coverage (RTC) is above 50%, the mean difference E_{GD} between the gage value R_G and the radar derived value R_D , using Z_{DR} , is smaller than E_{GZ} , which is the mean difference given by a conventional radar. For example, the data illustrated in Figs. 6 to 10 lead to mean difference values of $E_{GD} = 17.0$ and $E_{GZ} = 22.7 \text{ mm h}^{-1}$, respectively. Therefore, the use of the differential reflectivity Z_{DR} values has provided, in this case, a 25% decrease in the mean difference between the raingage and the radar

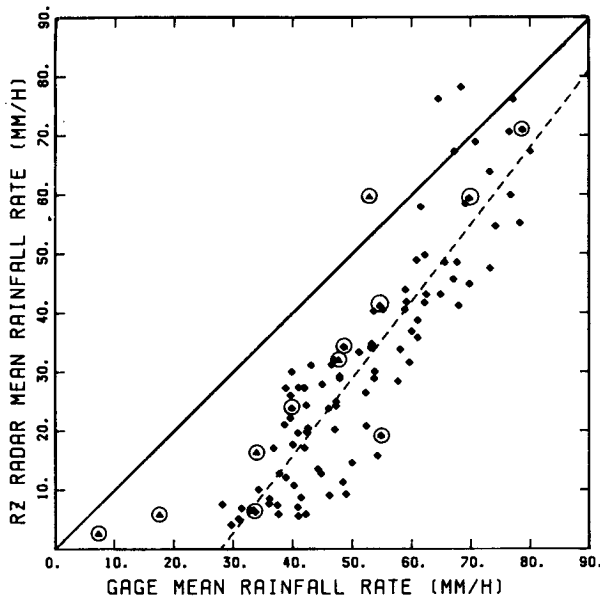


FIG. 9. Comparison between the mean values, over the 15-minute time interval lasting from 1500 to 1515 UTC 3 July 1986, for the different grid meshes of sizes $\Delta x = \Delta y = 0.25$ km, of the mean rainfall rate R_Z , deduced from the radar data, plotted versus the corresponding mean rainfall rate R_G , deduced from the gage data. The circles indicate the values belonging to grid meshes that contain one raingage.

rainfall rate estimates, for a time interval $\Delta t = 15$ minutes. However, the correlation coefficient ρ is sometimes slightly decreased, and the root mean square error σ is generally increased when using the Z_{DR} values. This larger scattering results from the smaller characteristic length scale of the R_D field, as discussed at the end of section 5, than that of the gage interpolated R_G field. When all the rainfall fields are computed on a larger grid $\Delta x = \Delta y = 1.0$ km (Messoud 1989), implying a similar spatial smoothing, the correlation coefficients ρ (not shown) are generally larger and the root mean square errors σ are smaller when using the differential reflectivity Z_{DR} values than for a conventional radar.

As shown in Table 1, for the longer time intervals Δt of 30 and 60 min, and for the time steps t_k for which the $R_{G \max}$ is large enough and for which the radar time coverage is large and evenly distributed, the correlation coefficient ρ between the R_G and the R_Z values increases to above 0.96 and the root mean square error E_{GZ} decreases from 22.7 to 12.8 and 6.5 mm h⁻¹, respectively. As shown by the comparison of Tables 1 and 2, when the time interval Δt increases to 30 minutes or to 1 hour, the improvement due to the use of the differential reflectivity Z_{DR} becomes relatively less important, because the small scale microphysical inhomogeneities are smoothed out by the time averaging process.

TABLE 1. Results of the comparison between the mean rainfall rate values deduced from the gage data R_G and that deduced from the radar data R_Z ; i.e., without using the differential reflectivity Z_{DR} . For the different time intervals Δt and for the different time steps t_k (W is widespread, C is convective precipitations), values of the maximum mean rainfall rate $R_{G \max}$, of the least-squares coefficients $R_Z = aR_G + b$, of the correlation coefficient ρ , of the root mean square error σ , of the mean difference $E_{GZ} = \text{rms}(R_G - R_Z)$, and of the estimated radar time coverage RTC.

M/D/Y:Time steps	$R_{G \max}$ (mm h ⁻¹)	a	b (mm h ⁻¹)	ρ	σ (mm h ⁻¹)	E_{GZ} (mm h ⁻¹)	RTC (%)
Interval $\Delta t = 15$ min							
15 June 1986:1830-1845 <i>W</i>	39.1	0.50	2.46	0.83	2.4	8.4	48
15 June 1986:1845-1900 <i>W</i>	9.3	-0.20	1.80	-0.57	0.2	4.1	10
3 July 1986:1400-1415 <i>C</i>	8.5	0.36	5.25	0.28	2.6	3.4	16
3 July 1986:1415-1430 <i>C</i>	15.9	0.50	2.86	0.29	2.9	5.1	55
3 July 1986:1430-1445 <i>C</i>	20.4	0.33	2.62	0.71	1.5	8.0	66
3 July 1986:1445-1500 <i>C</i>	59.5	0.03	33.65	0.04	9.2	14.0	33
3 July 1986:1500-1515 <i>C</i>	80.0	1.31	-36.40	0.89	8.6	22.7	70
3 July 1986:1515-1530 <i>C</i>	28.2	0.61	-1.39	0.94	1.7	6.9	40
3 July 1986:1530-1545 <i>C</i>	2.9	0.26	-1.97	0.52	0.3	1.2	62
3 July 1986:1545-1600 <i>C</i>	1.8	0.35	0.29	0.42	0.3	0.4	74
Interval $\Delta t = 30$ min							
15 June 1986:1830-1900 <i>W</i>	23.2	0.67	1.05	0.82	1.8	13.8	29
3 July 1986:1400-1430 <i>C</i>	11.5	0.15	0.38	0.26	0.9	8.2	31
3 July 1986:1430-1500 <i>C</i>	36.9	0.13	8.76	0.32	2.2	15.0	54
3 July 1986:1500-1530 <i>C</i>	51.1	1.28	-20.78	0.96	3.5	12.8	55
3 July 1986:1530-1600 <i>C</i>	1.4	0.48	-0.03	0.58	0.2	0.6	68
Interval $\Delta t = 60$ min							
3 July 1986:1400-1500 <i>C</i>	24.0	0.15	-0.17	0.44	1.0	15.9	42
3 July 1986:1500-1600 <i>C</i>	26.0	1.30	-10.97	0.96	1.7	6.5	62

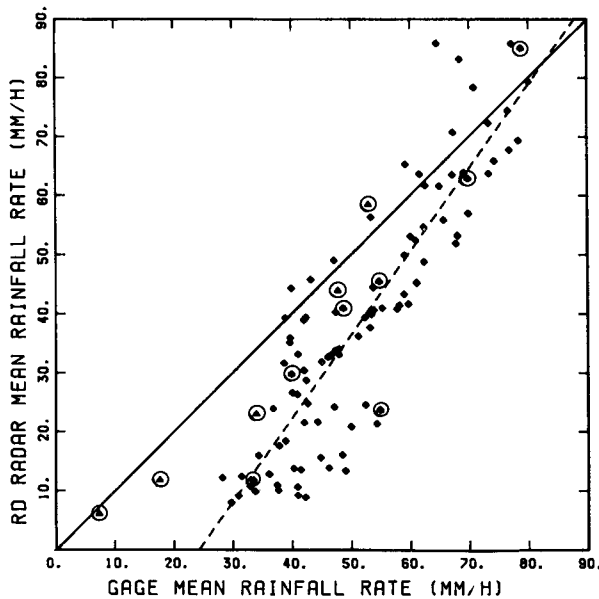


FIG. 10. As in Fig. 9 but for the comparison between the mean rainfall rate R_D , deduced from the dual polarization radar data, and the corresponding mean rainfall rate R_G , deduced from the gage data.

7. Summary and conclusions

Measurements of the rainfall rate have been made by a network of 14 one-minute raingages, located at

less than 10 km from a dual polarization radar, during several widespread or convective precipitation events. The mean distance of the gages within the network is 1.5 km, and the minimum and maximum distances between two gages are 0.48 and 4.97 km respectively.

Analyses have been made of the intercorrelation function of the time series of the mean rainfall rates measured by any two gages during consecutive time steps t_k of size Δt . These analyses show that the intercorrelation function takes its maximum value for a zero time lag between the time series, for all time intervals Δt greater than 5 minutes. Furthermore, the general tendency of the intercorrelation maximum to decrease with the distance between the two raingages (Eddy 1976; Creutin and Obled 1982; Creutin et al. 1988) is better observed as the time interval Δt increases. The resulting spatial scale of the gage rainfall field increases as the time interval and, for this network, a high enough correlation [$\rho_0(M_i, M_j)$ greater than 0.8] can only be obtained for a distance of the order of half the network mean distance, if the time interval Δt is greater than 15 minutes. This implies that for time intervals smaller than 15 minutes, the mean rainfall rate measurements made by any raingage is not statistically representative of a mean value over the area that the gage is supposed to cover (Eddy 1976). Furthermore, this measured value is sullied by a white noise effect that is more important than the gage measurement error, and that is due to the small inhomogeneity

TABLE 2. Idem Table 1 for the mean rainfall rate R_D ; i.e., by using the differential reflectivity Z_{DR} . Values of the least-squares coefficients $R_D = aR_G + b$, of the corresponding correlation coefficient ρ , of the root mean square error σ , and of the mean difference $E_{GD} = \text{rms}(R_G - R_D)$.

M/D/Y:Time steps	$R_{G \max}$ (mm h ⁻¹)	a	b (mm h ⁻¹)	ρ	σ (mm h ⁻¹)	E_{GD} (mm h ⁻¹)	RTC (%)
Interval $\Delta t = 15$ min							
15 June 1986:1830-1845 W	39.1	0.78	5.46	0.88	3.0	3.5	48
15 June 1986:1845-1900 W	9.3	-0.22	1.86	-0.41	0.3	4.2	10
3 July 1986: 1400-1415 C	8.5	-0.01	11.64	0.00	6.9	9.4	16
3 July 1986:1415-1430 C	15.9	0.53	5.23	0.25	3.5	3.9	55
3 July 1986:1430-1445 C	20.4	0.34	3.82	0.71	1.6	6.7	66
3 July 1986:1445-1500 C	59.5	0.22	33.90	0.32	6.5	10.6	33
3 July 1986:1500-1515 C	80.0	1.41	-34.11	0.88	9.9	17.0	70
3 July 1986:1515-1530 C	28.2	0.48	-0.39	0.93	1.5	7.3	40
3 July 1986:1530-1545 C	2.9	0.33	0.20	0.61	0.3	0.9	62
3 July 1986:1545-1600 C	1.8	0.37	0.46	0.44	0.3	0.4	74
Interval $\Delta t = 30$ min							
15 June 1986:1830-1900 W	23.2	0.93	2.95	0.88	1.9	7.8	29
15 June 1986:1400-1430 W	11.5	-0.05	3.03	-0.05	1.6	7.6	31
3 July 1986:1430-1500 C	36.9	0.20	15.26	0.33	3.1	7.9	54
3 July 1986:1500-1530 C	51.1	1.31	-16.91	0.94	4.3	8.9	55
3 July 1986:1530-1600 C	1.4	0.81	0.31	0.58	0.4	0.4	68
Interval $\Delta t = 60$ min							
3 July 1986:1400-1500 C	24.0	0.10	1.46	0.20	1.6	15.2	42
3 July 1986:1500-1600 C	26.0	1.70	-12.38	0.92	3.1	4.5	62

genities of the true precipitation field. The effect of this white noise leads, by the kriging method, to a smoothing of the interpolated field that, however, decreases as the time interval Δt increases.

As a consequence of these analyses, the mean rainfall field has been computed from the gage data by using the kriging interpolation techniques for different time steps of size Δt greater or equal to 15 minutes. For the same time steps, the mean rainfall field has also been estimated from the radar data, either without, or with using the differential reflectivity Z_{DR} values. The qualitative comparisons between the estimated fields show that the precipitation pattern is reasonably well reproduced by the three estimates, and that the characteristic length scale of the mean rainfall rate field estimated from the radar data without using Z_{DR} is smaller than that estimated from the raingage data. However, due to the small scale microphysical inhomogeneities measured by a dual polarization radar, the smallest length scale of the estimated precipitation field is obtained by using the differential reflectivity Z_{DR} values.

More precise comparisons between the mean rainfall fields show that the correlation between the R_G values, deduced from the gage data, and the R_Z values, deduced from the radar data without using the Z_{DR} values, is above 0.7 when the mean rainfall rate values are large, and when the radar time coverage is above 50%. The mean difference between the corresponding R_G and R_Z values is of the order of 25% of the maximum rainfall rate values. When using the Z_{DR} values, the corresponding mean difference decreases to 20%, implying that the use of the Z_{DR} values does improve, in this case, the estimation of the mean rainfall field for small time intervals.

For larger time intervals (1 hour or more), this improvement appears to be relatively less important because the small scale inhomogeneities are smoothed out by the averaging process. On the contrary, for smaller time intervals ($\Delta t < 15$ min), the differential reflectivity Z_{DR} gives valuable information on small scale microphysical heterogeneities, but it has not been possible to really evaluate the improvement that the Z_{DR} values can bring to the quantitative estimation of the short-time mean rainfall rate. This impossibility results from the poor estimation of the true mean rainfall rate values that can be obtained, for these short time intervals, from the data of the raingage network that, despite a gage mean distance of 1.5 km, appears not quite dense enough for this purpose. Experiments are now planned in order to obtain accurate rainfall rate measurements at the ground that could be statistically representative for these short time intervals.

Acknowledgments. The experiments have been carried out under the French Ministère de la Recherche et de la Technologie (M.R.T.) Contract 84F 0497, and with the partial support of the "Atmosphère Météo-

rologique" program committee of the Centre National de la Recherche Scientifique (C.N.R.S.), and of the Groupement National d'Études des Fléaux Atmosphériques (G.N.E.F.A.). The authors are indebted to all campaign participants, to J. Fournet-Fayard, R. Pejoux, and F. Besserve for their help in the data treatments, and to O. Guillot and J. Squarise for editing this manuscript. Stimulating discussions with Drs. D. Creutin, H. Andrieu and D. Ramond, and with Prof. C. Obled are gratefully acknowledged. We thank the reviewers for their comments, which helped improve the manuscript.

REFERENCES

- Austin, P. M., 1987: Relation between measured radar reflectivity and surface rainfall. *Mon. Wea. Rev.*, **115**, 1053–1070.
- Barnston, A. G., and J. L. Thomas, 1983: Rainfall measurement accuracy in FACE: A comparison of gage and radar rainfalls. *J. Climate Appl. Meteor.*, **22**, 2038–2052.
- Bringi, V. N., T. A. Seliga and E. A. Mueller, 1982: First comparisons of rainfall rates derived from radar differential reflectivity and disdrometer measurements. *I.E.E.E. Trans. Geosci. Remote Sens.*, **20**, 201–204.
- Chandrasekar, V., and V. N. Bringi, 1987: Simulation of radar reflectivity and surface measurements of rainfall. *J. Atmos. Oceanic Technol.*, **4**, 464–478.
- , W. A. Cooper and V. N. Bringi, 1988: Axis ratios and oscillations of raindrops. *J. Atmos. Sci.*, **45**, 1323–1333.
- Creutin, J. D., and C. Obled, 1982: Objective analysis and mapping techniques for rainfall fields: An objective comparison. *Water Resour. Res.*, **18**, 413–431.
- , G. Delrieu and T. Lebel, 1988: Rain measurement by raingage-radar combination: A geostatistical approach. *J. Atmos. Oceanic Technol.*, **5**, 102–115.
- Doviak, R. J., 1983: A survey of radar rain measurement techniques. *J. Climate Appl. Meteor.*, **22**, 832–849.
- , and D. S. Zrnić, 1984: *Doppler Radar and Weather Observations*. Academic Press, 458 pp.
- Eddy, A., 1976: Optimal raingage densities and accumulation times: A decision-making procedure. *J. Appl. Meteor.*, **15**, 962–971.
- Feingold, G., and Z. Levin, 1987: Application of the lognormal raindrop distribution to differential reflectivity radar measurement (Z_{DR}). *J. Atmos. Oceanic Technol.*, **4**, 377–382.
- Goddard, J. W. F., S. M. Cherry and V. N. Bringi, 1982: Comparison of dual polarization radar measurements of rain with ground-based disdrometer measurements. *J. Appl. Meteor.*, **21**, 252–256.
- Hall, M. P. M., S. M. Cherry, J. W. F. Goddard and G. R. Kennedy, 1980: Rain-drop sizes and rainfall rate measured by dual polarization radar. *Nature*, **285**, 195–198.
- Huff, F. A., 1970: Sampling errors in measurement of mean precipitation. *J. Appl. Meteor.*, **9**, 35–44.
- Husson, D., Y. Pointin and D. Ramond, 1989: Discrimination between hail and rain precipitation types from dual polarization radar, raingage and hailpad data. *J. Theor. Appl. Climate*, **40**, 201–207.
- Illingworth, A. J., J. W. F. Goddard and S. M. Cherry, 1987: Polarization radar studies of precipitation development in convective storms. *Quart. J. Roy. Meteor. Soc.*, **113**, 469–489.
- Jameson, A. R., 1983: Microphysical interpretation of multi-parameter radar measurements in rain. Part I: Interpretation of polarization measurements and estimation of raindrop shapes. *J. Atmos. Sci.*, **40**, 1792–1802.
- Lybanon, M., 1985: A simple generalized least-squares algorithm. *Comput. Geosci.*, **11**, 501–508.

- Matheron, G., 1971: *The Theory of Regionalized Variables and its Applications*. Ecole des Mines, Cahier 5, 211 pp.
- Messaoud, M., 1989: Hydrologie aux fines échelles de temps et d'espace à partir des données de pluviomètres et d'un radar météorologique. Thèse de l'Université de Clermont-Ferrand.
- Pointin, Y., D. Ramond and J. Fournet-Fayard, 1988: Radar differential reflectivity Z_{DR} : A real-case evaluation of errors induced by antenna characteristics. *J. Atmos. Oceanic Technol.*, **5**, 416–423.
- Pruppacher, H. R., and R. L. Pitter, 1971: A semi-empirical determination of the shape of cloud and rain drops. *J. Atmos. Sci.*, **28**, 86–94.
- Sachidananda, M., and D. S. Zrnić, 1987: Rain rate estimates from differential polarization measurements. *J. Atmos. Oceanic Technol.*, **4**, 588–598.
- Seliga, T. A., and V. N. Bringi, 1976: Potential use of radar differential reflectivity measurements at orthogonal polarizations for measuring precipitation. *J. Appl. Meteor.*, **15**, 69–76.
- , V. N. Bringi and H. H. Al-Khatib, 1981: A preliminary study of comparative measurements of rainfall rate using the differential reflectivity technique and a raingage network. *J. Appl. Meteor.*, **20**, 1362–1368.
- , K. Aydin and H. Direskeneli, 1986: Disdrometer measurements during an intense rainfall event in Central Illinois: Implications for differential reflectivity radar observations. *J. Climate Appl. Meteor.*, **25**, 835–846.
- Silverman, B. A., L. K. Rogers and D. Dahl, 1981: On the sampling variance of raingage networks. *J. Appl. Meteor.*, **20**, 1468–1478.
- Ulbrich, C. W., and D. Atlas, 1984: Assessment of the contribution of differential polarization to improved rainfall measurements. *Radio. Sci.*, **19**, 49–57.
- Wilson, J. W., and E. A. Brandes, 1979: Radar measurement of rainfall—A summary. *Bull. Amer. Meteor. Soc.*, **60**, 1048–1058.
- Woodley, W. L., A. R. Olsen, A. Herndon and V. Wiggert, 1975: Comparison of gage and radar methods of convective rain measurement. *J. Appl. Meteor.*, **14**, 909–928.