



Unravelling the emplacement dynamics of silicic lava flows: the case of the Grande Cascade trachyte flow (Monts Dore, France)

Jean-Marie Prival, Andrew J.L. J.L. Harris, Claudio Robustelli Test, Elena Zanella, Jonas Biren, Magdalena Oryaëlle Chevrel

► To cite this version:

Jean-Marie Prival, Andrew J.L. J.L. Harris, Claudio Robustelli Test, Elena Zanella, Jonas Biren, et al.. Unravelling the emplacement dynamics of silicic lava flows: the case of the Grande Cascade trachyte flow (Monts Dore, France). Cities on Volcanoes 10, Sep 2018, Naples, Italy. hal-01871387

HAL Id: hal-01871387

<https://hal.science/hal-01871387>

Submitted on 10 Sep 2018

HAL is a multi-disciplinary open access archive for the deposit and dissemination of scientific research documents, whether they are published or not. The documents may come from teaching and research institutions in France or abroad, or from public or private research centers.

L'archive ouverte pluridisciplinaire **HAL**, est destinée au dépôt et à la diffusion de documents scientifiques de niveau recherche, publiés ou non, émanant des établissements d'enseignement et de recherche français ou étrangers, des laboratoires publics ou privés.

Unravelling the emplacement dynamics of silicic lava flows: the case of the Grande Cascade trachyte flow (Monts Dore, France)



Jean-Marie Prival¹ (j-marie.prival@uca.fr), Andrew Harris¹, Claudio Robustelli Test², Elena Zanella², Jonas Biren¹, Oryaëlle Chevrel¹
¹ Laboratoire Magmas et Volcans, Université Clermont Auvergne, CNRS, IRD, OPGC, F-63000 Clermont-Ferrand, France
² Dipartimento di Scienze della Terra, Università degli Studi di Torino, Torino, Italy



Introduction

Problematic and objective

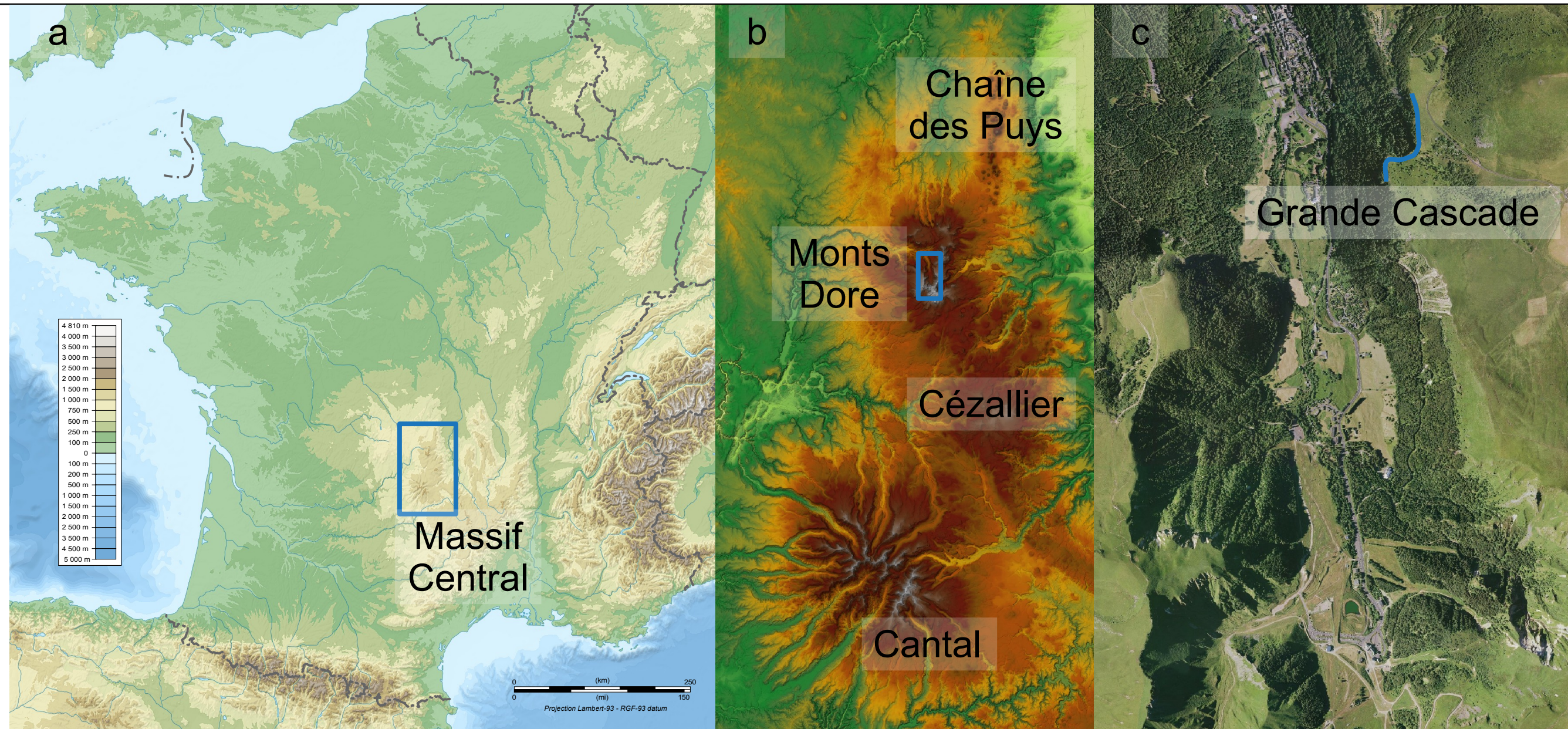
Silicic lava flows are a rarely observed style of volcanism for which emplacement models remain poorly constrained. Yet they represent a hazard where oversteeping flow fronts can collapse and generate block-and-ash flows as at Santiaguito (Guatemala) in 1986, Unzen (Japan) in 1991, and Sinabung (Indonesia) in 2014. **Our objective is to build new emplacement models for silicic lava flows.**

Context

The Grande Cascade lava flow is located in the Monts Dore massif, the youngest stratovolcano of the French Massif Central, active from 3.09 to 0.23 Ma. The flow has been dated at 0.38 ± 0.02 Ma [1]. It is 20 to 40 m thick and made of trachyte with up to ~40 % sanidine phenocrysts. **The flow can be divided vertically into four facies: (1) a basal breccia; (2) a shear zone; (3) a massive plug; and (4) a foliated surface.**



The Grande Cascade around 1930.



a: topography of France (NASA/NCEI). b: the four volcanic massifs of northwest Massif Central (CRAIG). c: orthophotograph showing the location of the Grande Cascade in the Dore valley (IGN).

Methods

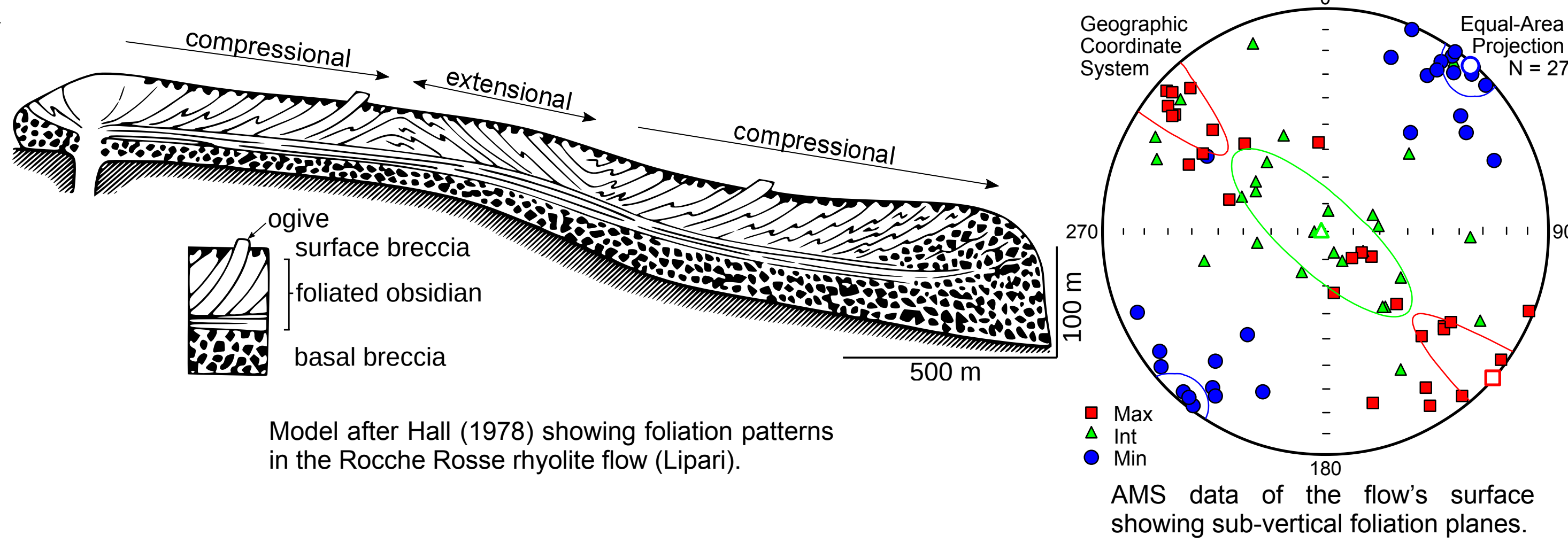
- Structural analysis: mapping and measuring structures.
- Textural analysis: density, vesicularity, crystal orientation...
- Anisotropy of Magnetic Susceptibility (AMS) to know flow directions at a local scale.

The surface



Parallel, subvertical foliation planes on the flow's surface.

The surface of the flow is covered by vegetation, but a few outcrops allow to see parallel foliation planes, with an average inclination of the magnetic foliation of 88.5° . **These vertical structures could be the result of a ramping process due to a compressive regime behind the flow front**, as observed at the nearby puy de Cliergue trachyte flow [2], or at the Rocche Rosse rhyolite flow [3].

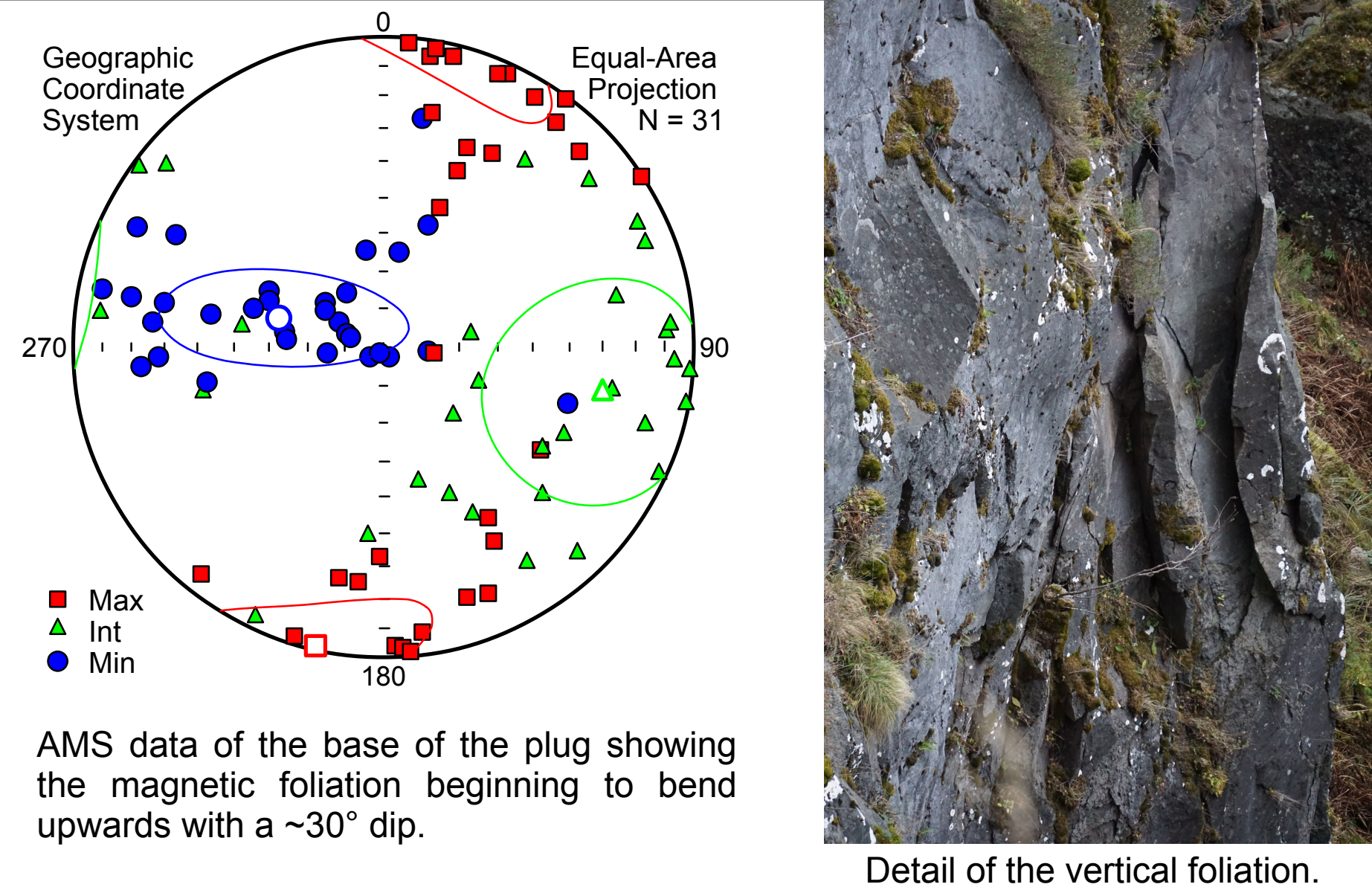


The plug



Plug outcrop showing a vertical foliation.

The plug is the dominant facies, making ~85 % of the flow's thickness. There is chemical variation from the bottom (62.5 wt% silica) to the top (66.5 %) of the unit. This might be the result of a mixing process between two magmas, as shown by basic enclaves, banded structures and emulsified textures [4]. Lava deformation has created a foliation within the plug, with 5-20 cm thick slabs detaching from the cliff due to weathering.

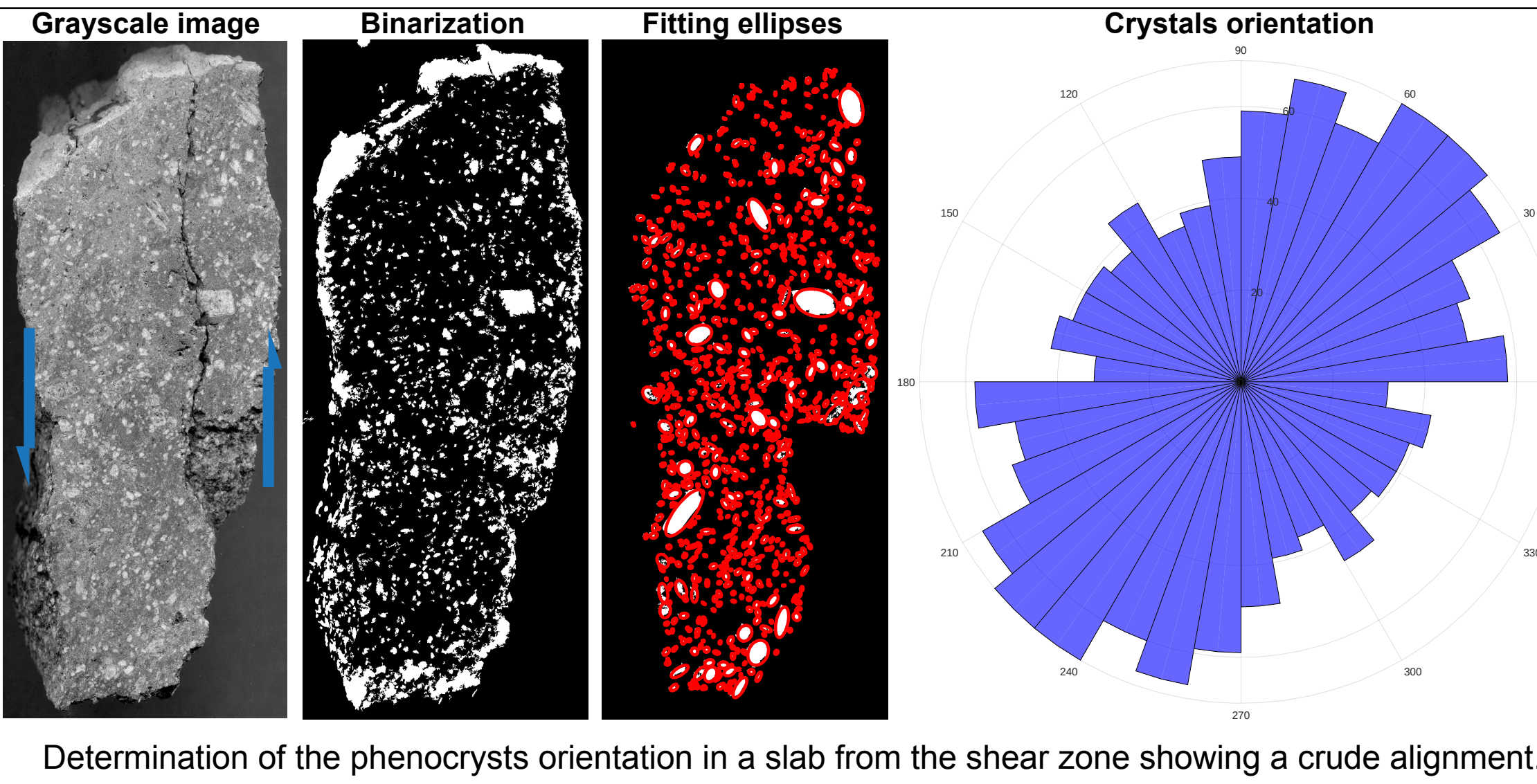


The shear zone

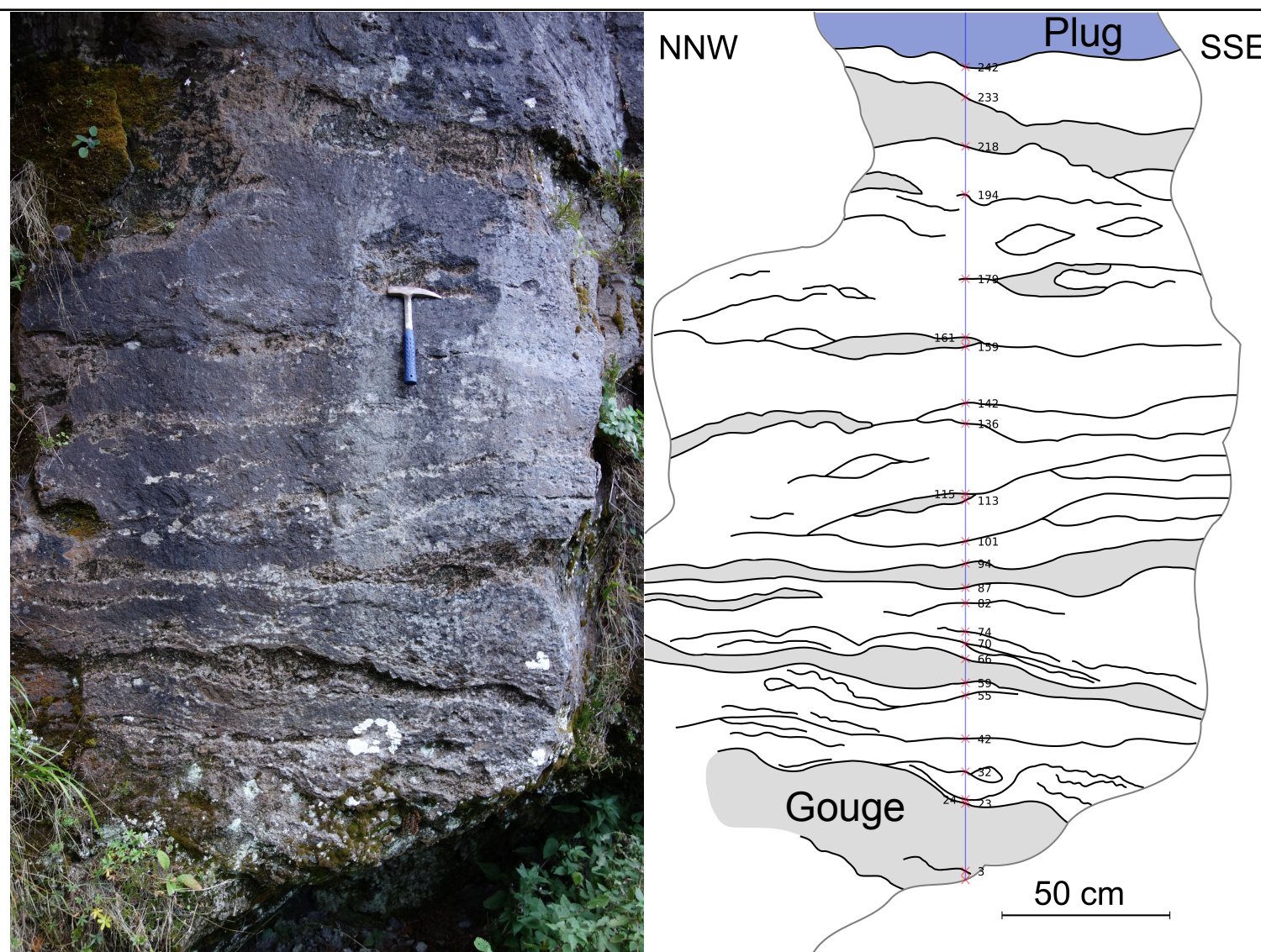


Typical outcrop of the shear zone, showing ~2.5 m of subparallel shear planes under the undeformed plug.

The shear zone is 2–3 m thick on average, but it almost disappear locally, where the plug is thinner, thus the vertical stress less intense. The frequency of shear planes tends to decrease from the base to the top of the zone.



Determination of the phenocrysts orientation in a slab from the shear zone showing a crude alignment.



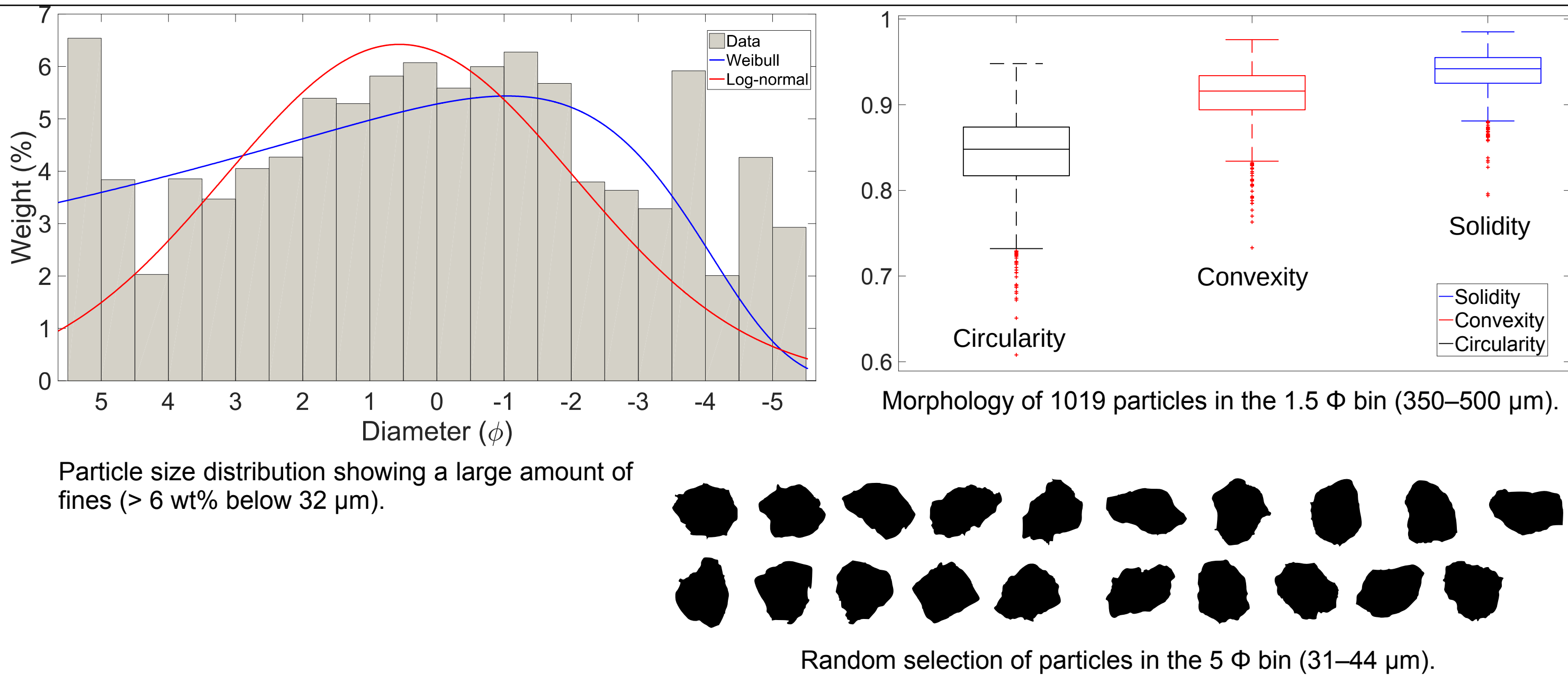
Measurements of shear planes frequency showing a decrease going upward: one plane every ~7 cm in the lower half, one every ~14 cm in the upper half.

The breccia



Outcrop of breccia lying directly under the massive plug. The blocks are surrounded by a dominant, powdery, grey matrix.

Pockets of breccia intermittently crop out at the base of the flow. The contact with the ground is never visible, covered by rubble, but some outcrops expose up to ~3 m of thickness. The breccia is composed by centimetric to decimetric blocks surrounded by a dominant, powdery, grey matrix. Its particle size distribution, particle morphology and componentry all converge towards the hypothesis that the breccia was formed by grinding of the lava under its own weight.



Conclusion

We analyzed the four facies of a thick trachyte flow to infer its emplacement dynamics. We found that its emplacement was driven by deformation, with a solid plug “sliding” over a shear zone and basal breccia, which accommodated most of the stress. The speed and timescale of emplacement, a crucial parameter for hazard assessment, remains unknown. **This study stresses the need to build new emplacement models for silicic lava flows.**

References

- [1] Cantagrel and Baubron (1983) Chronologie K-Ar des éruptions dans le massif volcanique des Monts Dore : implications volcanologiques. Géologie de la France (2), 1, 1-2.
- [2] Latutrie et al. (2017) Eruption and emplacement dynamics of a thick trachytic lava flow of the Sancy volcano (France). Bulletin of Volcanology 79: 4.
- [3] Hall (1978) The stratigraphy of Northern Lipari and the structure of the Rocche Rosse rhyolite lava flow and its implications. Unpubl. B.Sc. thesis, University of Leeds.
- [4] Gourgau and Maury (1984) Magma mixing in alkaline series: an example from Sancy volcano (Mont-Dore, Massif Central, France). Bulletin of Volcanology 47: 4.