



**HAL**  
open science

# Risk and Comfort Management for Multi-Vehicle Navigation using a Flexible and Robust Cascade Control Architecture

Charles Philippe, Lounis Adouane, Benoit Thuilot, Antonios Tsourdos,  
Hyo-Sang Shin

► **To cite this version:**

Charles Philippe, Lounis Adouane, Benoit Thuilot, Antonios Tsourdos, Hyo-Sang Shin. Risk and Comfort Management for Multi-Vehicle Navigation using a Flexible and Robust Cascade Control Architecture. IEEE European Conference on Mobile Robots (ECMR), Sep 2017, Paris, France. pp.252 – 258, 10.1109/ECMR.2017.8098703 . hal-01658564

**HAL Id: hal-01658564**

**<https://uca.hal.science/hal-01658564v1>**

Submitted on 23 Feb 2018

**HAL** is a multi-disciplinary open access archive for the deposit and dissemination of scientific research documents, whether they are published or not. The documents may come from teaching and research institutions in France or abroad, or from public or private research centers.

L'archive ouverte pluridisciplinaire **HAL**, est destinée au dépôt et à la diffusion de documents scientifiques de niveau recherche, publiés ou non, émanant des établissements d'enseignement et de recherche français ou étrangers, des laboratoires publics ou privés.

# Risk and Comfort Management for Multi-Vehicle Navigation using a Flexible and Robust Cascade Control Architecture

Charles Philippe<sup>1,2</sup>, Lounis Adouane<sup>1</sup>, Benoît Thuilot<sup>1</sup>, Antonios Tsourdos<sup>2</sup> and Hyo-Sang Shin<sup>2</sup>

**Abstract**—This paper presents a new cascade control architecture formulation for addressing the problem of autonomous vehicle trajectory tracking under risk and comfort constraints. The integration of these constraints has been split between an inner and an outer loop. The former is made of a robust controller dedicated to stabilizing the car dynamics while the latter uses a nonlinear Model Predictive Control (MPC) scheme to control the car trajectory. The proposed structure aims to take into account several important aspects, such as robustness considerations and disturbance rejection (inner loop) as well as control signal and state constraints, tracking error monitoring and tracking error prediction (outer loop). The proposed design has been validated in simulation while comparing mainly with common kinematic trajectory controllers.

## I. INTRODUCTION

Autonomous vehicles are getting more and more important in the academic field as well as in the industry. Constructors such as BMW, Volvo, Tesla and other companies such as Uber are trying to reach the next step of autonomy for consumer cars. Recent incidents or accidents [15] have highlighted the need for safe and robust architectures.

The objectives of this paper are to describe the development of a control architecture for autonomous vehicle under the constraints specific to urban passenger transportation. The two major categories of constraints are the safety and the comfort of the passengers. Indicators of tracking performance and health monitoring will be developed to allow for the future development of a supervision layer in the architecture.

In the end, the proposed architecture aims to be a generic and easily transposable solution for single and multi-vehicle navigation. These aims will be reached with a combination of an MPC controller for the tracking and a robust  $H_\infty$  controller for yaw stabilization.

The numerical applications are done for the VIPALAB vehicles, which are autonomous electric vehicles for urban transportation (cf. Fig. 1).

The remainder of this paper will be organized as follows. Section II will give an overview on the works on autonomous vehicle control and will describe the pertinence and novelty of the proposed architecture. Section III will explain the design of the two blocks of the cascade control architecture. Section IV will show comparative simulations in a range situations for different controllers and architectures.



Fig. 1. VIPALAB autonomous transport vehicles in a coordinated maneuver

## II. TOWARDS A FLEXIBLE AND ROBUST CONTROL ARCHITECTURE

### A. Related works

The existing works on autonomous vehicle lateral control can be separated in two main categories. There are trajectory/target tracking algorithms on one side and yaw stabilization algorithms on the other side. Some approaches will be described as *integrated* and aim to fulfill those two tasks at the same time. For the tracking task, kinematic controllers are used in [14] and [3]. Depending on the implementation they can cover a range of speeds and situations but the lack of consideration of dynamic effects can be problematic for highly dynamic situations. Yaw stabilization (or active steering) schemes include [6] and [5] which use respectively the linear robust control framework and the MPC framework. Both approaches show very good performances, at the expense of a robustness proof in [5] with the MPC design. As for integrated approaches, a first example based on a nonlinear kinematic controller is presented in [8]. Empirical terms have been added to a trajectory controller for dynamic effects compensation. In [7] is presented another integrated approach based on linear adaptive control. In [2] is presented an approach based on MPC. The choice of the technique mainly depends on the design objectives. Some other works cover the two tasks but with separate controllers for each one, which has the advantage to separate the objectives for each task and give an adapted answer. These approaches usually use two controllers in a cascade architecture. Such works for ground vehicles include [12] and [10]. Linear control is often used for the inner control loop. A similar cascade architecture for aerospace applications is presented in [4]. It is a common approach in Unmanned Aerial Vehicles (UAV)

<sup>1</sup> Institut Pascal, Université Clermont Auvergne, Clermont-Ferrand, France name.surname@uca.fr

<sup>2</sup> Cranfield University, Cranfield, United Kingdom name.surname@cranfield.ac.uk

design. Usually, these architectures fail to take into account the comfort, safety and implementability at the same time since they are more performance based. This is what the proposed design aims to do.

### B. Architecture design

Compared to integrated design, the advantage of cascade architectures is the flexibility for multi-vehicle navigation and the natural separation between kinematic and dynamic phenomenons. Moreover, the trajectory tracking error dynamics are not on the same time scale than the car yaw dynamics. This separation is analogous to the Guidance/Control framework [9] even though it is more a kinematic/dynamic separation.

The MPC has been used with great success to address trajectory tracking and yaw stabilization as an integrated approach. However it seems more relevant in this application to separate the yaw stabilization in a cascade architecture.

The inner loop for yaw stabilization has to deal with the uncertainty on the vehicle physical parameters. For instance the weight and inertia of the vehicle will undergo wide variations because of the variable passenger repartition. The friction coefficient  $\mu$  will also be unknown and unmeasurable.

For these reasons the linear robust control framework has been chosen to design the inner loop controller. It enables the robustness assessment of the controller under the model uncertainty, which is a big asset for ensuring safety.

The designed architecture is shown in Fig. 2. The MPC controller generates a desired yaw rate  $r_d$  and a desired speed  $v_d$  to track the reference trajectory  $X_{ref}$ . The inner controller tracks the signal  $(r_d, v_d)$  by generating a desired steering angle  $\delta_d$  and acceleration  $a_d$  to the vehicle. The state  $X_{dyn}$  (resp.  $X_{kin}$ ) is the dynamic (resp. kinematic) state of the vehicle. It will be defined in section III-A (resp. III-B).

## III. PROPOSED CASCADE CONTROL ARCHITECTURE

This architecture will have to fulfill the tasks of trajectory following as well as target tracking in order to be fit for multi-vehicle navigation. Trajectory following is the action of following a predefined line (defined in  $(x, y)$  coordinates) with a reference speed  $v_{ref}$  at each point. For target following the same information is available but only at the current instant. More states can be known about the target, whether by sensing or communication. As mentioned in section II, the proposed architecture will have to handle the two tasks while ensuring passenger comfort and safety. The inner loop design will be described first and then the outer loop design, since it depends on the former.

### A. Inner loop design

A mixed sensitivity  $H_\infty$  controller has been chosen because it is an optimal design technique, and it has explicit disturbance rejection and frequency domain performance specifications. The disturbance rejection characteristics are interesting because it will dictate the vehicle's behaviour

TABLE I  
PARAMETER VALUES FOR UNCERTAIN CAR PLANT STUDY

parameter	notation	value
wheelbase	$l_b$	3m
inertial radius	$i_r$	1.5m
cornering stiffnesses	$c_f, c_r$	700N/deg
actuator time constant	$\tau_{act}$	0.6s
mass	$m$	600kg $\pm$ 30%
CG position to front axle	$l_f$	1.4m $\pm$ 20%
speed	$v$	3m/s $\pm$ 50%
friction coefficient	$\mu$	0.65 $\pm$ 50%

under wind gusts. Too strong of a reaction could be seen as dangerous and uncomfortable.

For this application the model in the state space form is shown in (1). It is based on the kinematic bicycle representation. It consists of a 2 degree of freedom (DoF) model for the sideslip  $\beta$  and yaw rate  $r$  dynamics and a first order model of time constant  $\tau_{act}$  for the evolution of  $\delta$ , the steering angle. The overall state is  $X_{dyn} = (\beta, r, \delta)^T$  (resp. sideslip, yaw rate and steering angle defined in Fig. 3). The input is the desired steering angle  $\delta_d$ . This model has been presented in depth in [1]. It is suitable for low speed situations such as urban traffic.

$$\dot{X}_{dyn} = \begin{pmatrix} a_{11} & a_{12} & b_1 \\ a_{21} & a_{22} & b_2 \\ 0 & 0 & -\tau_{act}^{-1} \end{pmatrix} X_{dyn} + \begin{pmatrix} 0 \\ 0 \\ \tau_{act}^{-1} \end{pmatrix} \delta_d \quad (1)$$

The coefficients  $a_{ij}$  and  $b_i$  depend on the constants  $c_f, c_r, m, v, J, l_b, l_f$  defined in Table I.

The following range of configurations has been considered:

- from zero passenger to four passengers of 100kg each
- speeds from 1.5m/s to 4.5m/s
- friction coeff in  $[0.3, 1]$  (from a slippery wet road to a dry road)
- Centre of Gravity (CoG) from 1.1m to 1.6m to front axle (because of the passenger repartition)

The corresponding uncertain variables have been summarized in Table I. As a way to reduce the number of uncertain variables,  $J$  has been considered proportional to  $m$  with the intermediate of the inertial radius  $i_r$  (c.f. [1]).

The result of the  $H_\infty$  design is shown in (2) with  $K_{CF}$  being the feedforward filter and  $K_{DR}$  being the feedback filter. The filters have been approximated by second order transfer functions to make the implementation faster.

$$\begin{cases} K_{CF}(s) = \frac{s^2 + 21.2s + 158.2}{s^2 + 20s + 156.3} \\ K_{DR}(s) = \frac{250(s + 124)(s + 1.67)}{s(s + 17.5)} \end{cases} \quad (2)$$

The robustness analysis shows that the design is robust to the modeled uncertainty. The performance analysis shows that the rise time for the yaw rate is always between 0.3s and 0.8s with a nominal value at 0.5s and the system is always well damped (as seen in Fig. 4).

Since the system is always well damped (there is no overshoot), it will be approximated by a first order system

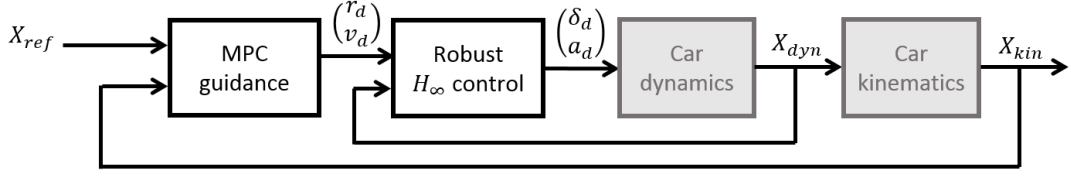


Fig. 2. Designed cascade architecture

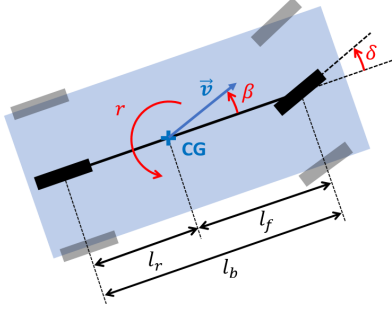


Fig. 3. Dynamic bicycle model conventions

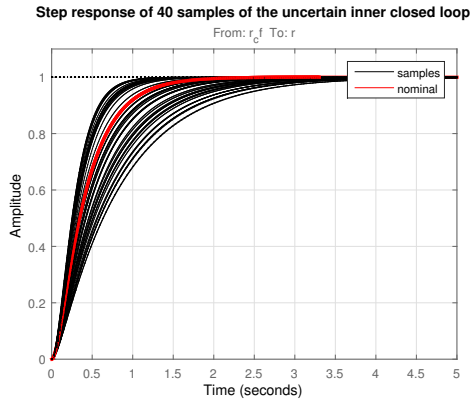


Fig. 4. Closed-loop step response envelope

in the following developments, making for a simpler model for the MPC.

### B. Outer loop design

The outer loop controller (cf. Fig 2) needs to address the problem of stabilizing the vehicle around a moving target or a reference trajectory.

Even though it is a classical approach, MPC has good qualities to address our problem: it finds an optimal solution, can inherently deal with non linear processes such as car steering and can include constraints on the states and control signal (linked to comfort and safety). The prediction is also valuable to deal with slow dynamics and to anticipate future situations.

The main problem of MPC is that it always needs a reference trajectory over a finite horizon. In multi-vehicle navigation it is not always available and thus needs to be predicted to enable the use of MPC. Fig. 5 shows a situation where a reference trajectory for the virtual target  $T$  that  $V_F$  (the *follower*) has to follow is only partially known over the

MPC horizon. In this situation the aim is to keep constant offsets  $\Delta y_{ref}$  and  $\Delta s_{ref}$  with the trajectory of  $V_L$  (the *leader*). As the prediction horizon of the MPC depends on the model dynamics, it is not correlated to how far the target is to the leading vehicle. Thus a big MPC horizon and a small leader/target distance can lead to such a situation.

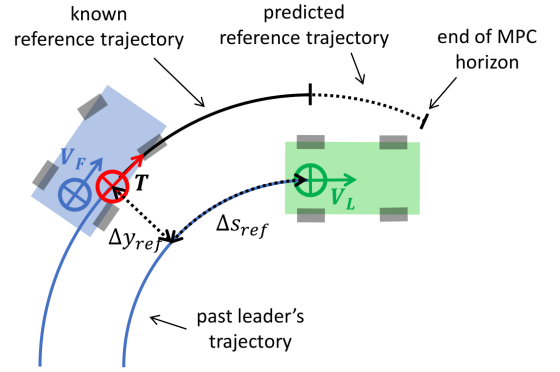


Fig. 5. Partial availability of a reference trajectory in leader/follower navigation

The reference trajectory prediction is based on the hypotheses that the yaw rate  $r$  and speed  $v$  of the leader are constant. The states for the prediction are the same as the MPC presented later in (3). It generates a reference trajectory  $\hat{X}_{ref}(k + N|k)$  over the MPC prediction horizon  $N$ . The MPC scheme can then be used seamlessly whether there is a reference trajectory over the whole prediction horizon or not and makes the architecture more flexible.

The chosen model for the MPC is shown in (3). At a timestep  $k$ , the state is  $X_{kin}(k) = (x_k, y_k, \psi_k, r_k, v_k)^T$  where  $x_k, y_k$  and  $\psi_k$  are defined in Fig. 6,  $r_k$  is the yaw rate of the car and  $v_k$  its speed) and the input is  $U = (r_d, v_d)^T$  (the desired yaw rate and speed). The only parameters that describe the vehicle's dynamics are  $\tau_r$  and  $\tau_v$ , the time constants for the yaw rate and the speed responses which have been identified on the close inner loop (cf. Table II). The last parameter is the sampling time  $T_s$  of the loop. These responses are assumed to be described by first order models. It is a realistic hypothesis as long as the real responses are well damped. This is the case here as seen in Fig. 4 thanks to the inner loop designed in section III-A.

$$\begin{cases} x_{k+1} &= x_k + T_s v_k \cos \psi_k \\ y_{k+1} &= y_k + T_s v_k \sin \psi_k \\ \psi_{k+1} &= \psi_k + T_s r_k \\ r_{k+1} &= r_k + \tau_r^{-1} (r_d - r_k) \\ v_{k+1} &= v_k + \tau_v^{-1} (v_d - v_k) \end{cases} \quad (3)$$

The MPC scheme finds a control input  $\mathbf{U}_{opt}$  that minimizes a cost function  $J(\mathbf{U})$ , where  $\mathbf{U} = (U_k, \dots, U_{k+N})$  is series of control signals to test over the prediction horizon  $N$ . This function is usually composed of a term that penalizes the errors to the reference trajectory and other terms to smooth the control signal.

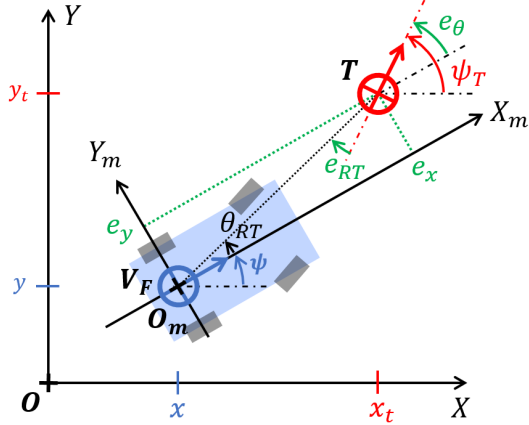


Fig. 6. Navigation errors definition

The penalized terms are:

- $\tilde{\mathbf{X}}$ , the matrix of differences w.r.t. the reference trajectory over the prediction horizon  $N$
- $\hat{\mathbf{E}}(k + N|k)$  the navigation errors over the prediction horizon  $N$ . These errors are defined in Fig. 6 and further detailed in [14]. They are a convenient way to work in a local frame that is in the vehicle's orientation.
- $\tilde{\mathbf{U}}$  the difference between the test input signal and the previous optimal input signal
- $\mathbf{U}_\Delta$  the differences between two successive input values in the tested input signal (a.k.a. control effort)

The chosen cost function is defined in (4). It is a weighted sum of the penalty terms:

$$J(\mathbf{U}) = \tilde{\mathbf{X}}^T Q \tilde{\mathbf{X}} + \hat{\mathbf{E}}(k + N|k)^T S \hat{\mathbf{E}}(k + N|k) + \tilde{\mathbf{U}}^T R \tilde{\mathbf{U}} + \mathbf{U}_\Delta^T R_\Delta \mathbf{U}_\Delta \quad (4)$$

The penalties on  $\tilde{\mathbf{U}}$  and  $\mathbf{U}_\Delta$  tend to smooth the tracking and are often encountered in nonlinear MPC schemes. The penalty on the navigation errors allows to separately penalize the lateral and longitudinal errors ( $e_x$  and  $e_y$ ) and have been preferred to the penalty on the state difference  $\tilde{\mathbf{X}}$ . The values of the weight matrices  $Q$ ,  $S$ ,  $R$  and  $R_\Delta$  are compiled in Table II. The raw state difference  $\tilde{\mathbf{X}}$  has not been penalized except for the speed difference, which was found to smooth the longitudinal tracking.

For comfort and safety, the following constraints have been introduced:

- $|r_d| \leq r_{max}$
- $|\dot{r}_d| \leq dr_{max}$
- $v_{min} \leq v_d \leq v_{max}$
- $|a_{y,d}| = |v_d r_d| \leq a_{y,max}$
- $|a_{x,d}| = |\Delta v_d / T_s| \leq a_{x,max}$
- $|\kappa_d| = |r_d / v_d| \leq \kappa_{max}$

TABLE II  
MPC CONTROLLER PARAMETERS

$N$	14
$\tau_r$	0.5s
$\tau_v$	1.4s
$Q$	diag(0, 0, 0, 0, 0.1)
$S$	diag(1, 2, 0, 0)
$R$	diag(0, 0)
$R_\Delta$	diag(15, 15)
$r_{max}$	30 deg/s
$dr_{max}$	50 deg/s <sup>2</sup>
$v_{max}$	4.5 m/s
$a_{y,max}$	5 m/s <sup>2</sup>
$a_{x,max}$	3 m/s <sup>2</sup>
$e_{x,max}$	0.5 m
$e_{y,max}$	0.2 m

The constraints on the yaw rate  $r_d$ , the yaw rate derivative  $\dot{r}_d$  and the lateral/longitudinal accelerations  $a_{y,d}$  and  $a_{x,d}$  are here for comfort. The constraints on the speed  $v_d$  and the curvature  $\kappa_d$  are physical limitations of the vehicle. Two additional constraints on the tracking errors have been added:  $|e_x| \leq e_{x,max}$  and  $|e_y| \leq e_{y,max}$ . These constraints are used to ensure the vehicle will stay within given bounds around the target. For example, the constraint on  $e_y$  will depend on the road width. The numerical values used for the constraints are compiled in Table II. The optimization function used for the simulations is the *fmincon* Matlab optimization function under constraints. The input constraints will always be respected (it restricts the search space) and the function will try to find a solution that respects the additional constraints on the tracking errors, unless impossible. In the latter case, the optimization function's output will mention that the constraints were not respected. This information can be used to prevent the violation of constraints before it actually happens. Finally, the MPC scheme runs approximately in 20 seconds for a 10 seconds Simulink simulation with a modern computer (a 2013 Intel i5 equipped laptop) and a loop rate of 10Hz.

### C. Conclusion

The proposed architecture is comprised of two loops in cascade that aim to solve the trajectory tracking/target following problems under comfort and safety constraints. The task separation allows to split the constraints and to focus on different aspects of the problem at each stage as well as allowing a simpler design overall.

## IV. SIMULATIONS AND RESULTS

### A. Model Used

The model used for the simulations consists of a 3DoF bicycle chassis model with a linear tyre model (for both the longitudinal and lateral forces). The simulations have been performed in Simulink.

The model for the simulations is based on the one presented in section III-A. The rotational wheel dynamics have been added in order to have a realistic longitudinal behaviour. Thus the state vector is defined as  $X = (\beta, r, v, \omega_f, \omega_r)^T$  with the three first states already defined in (1) and  $\omega_f$  (resp.

$\omega_r$ ) is the front (resp. rear) wheel rotational speed. The input vector is  $U = (\delta_d, a_d)^T$ , the desired steering angle and longitudinal acceleration. These inputs are transformed into actual wheel angle and acceleration by the {actuator + controller} systems modeled by first order transfer functions of time constant 0.6s (resp 1s) and damping 0.8. The front and rear axles inertias are  $J_f = J_r = 0.45\text{kg}\cdot\text{m}^{-2}$  and the longitudinal tyre stiffnesses are  $C_{l,f} = C_{l,r} = 1\text{e}^4\text{N}$ . The other model parameters will be within the range of values used for controller design (cf. Table I). Unless specified otherwise, the nominal values have been taken.

### B. Simulation scenarios

Comparisons will be made with two kinematic controllers. The first controller is the one presented in [14] and [13]. For simplicity it will be referenced as the "Vilca" controller. It is a nonlinear control law designed for both dynamic target following and waypoint navigation. It is based on a Lyapunov function design and is a recent example of a flexible kinematic controller. The other one is the "Pure Pursuit" controller [11], a widely used kinematic controller for trajectory tracking because of its simplicity and efficiency. It is a non linear controller that computes a curvature to reach a point on the trajectory at a look-ahead distance. This distance is usually proportional to the vehicle speed with a coefficient  $k_{PP}$  within a lower and upper bound (cf. Table III). Both algorithms compute the steering angle corresponding to the desired curvature under kinematic hypotheses, thus not taking into account actuator delays and slip.

For the simulations, the virtual target follows a sinusoidal path at a constant speed (cf. Fig 7). For the MPC controller it is assumed that no information of the target's future path is available to put it in difficult conditions. As a consequence, the prediction module described in section III-B will be used. It is on the other hand assumed that the trajectory is entirely available when using the pursuit controller, thus giving it more favorable conditions.

Two test case are presented:

- *Behaviour comparison*: A test at low speed to compare the behavior of the three controllers. For this test the nominal values for the car model will mostly be used.
- *Safety and comfort assessment*: A test at a higher speed and non-nominal car model values to check the robustness of the approaches. This test will also serve to check if the comfort constraints with our approach are respected in more aggressive maneuvers.

The common (resp. variable) parameters for the simulation scenarios are compiled in Table III (resp. Table IV-B).

### C. Behaviour comparison

All the nominal parameters for the model have been taken except the speed which is  $2\text{m/s}$ . The MPC shows a very good tracking compared to the two other methods (cf Fig. 8). However the control signals (Fig. 9) and the comfort indicators (Fig. 10) are approximately of the same magnitude for the three approaches. In easy maneuvers like this one the proposed architecture behaves well but has an edge on

TABLE III  
COMMON SIMULATIONS PARAMETERS

parameter	value
initial vehicle position	(1, 1) (m)
initial vehicle heading	$30^\circ$
target path curvature variation rate	0.1 Hz
max target path curvature	$1/15\text{m}^{-1}$
Vilca's law coefficients $K_V$	(1, 2.2, 8, 0.1, 0.01, 0.6)
Pursuit law look-ahead coeff. $k_{PP}$	0.5
Pursuit law look-ahead dist. bounds	[1, 5] (m)
outer loop sampling time $T_{s,g}$	1/10s
inner loop sampling time $T_{s,c}$	1/50s

TABLE IV  
VARIABLE SIMULATION PARAMETERS

parameter	value	
	First simulation	Second simulation
initial target position	(1.5, 1.5) (m)	(2, 2) (m)
initial target heading	$30^\circ$	$40^\circ$
Target speed	2m/s	4m/s
vehicle mass	600kg	750kg
friction coefficient $\mu$	0.65	0.4

neither the pursuit controller or on Vilca's controller in terms of comfort.

### D. Safety and comfort assessment

In this simulation, the safety has been assessed by checking the tracking performance under a change of mass, friction coefficient and speed. The respect of the comfort constraints with the proposed cascade architecture has been tested and compared with the behaviour of the other controllers. In this series, the target initial position was further from the vehicle initial position (cf. Table IV-B) to study the behaviour of the controllers when a more aggressive maneuver is required to follow the target.

The tracking performance of the designed cascade architecture is now far better than both the Pursuit controller and Vilca's controller (cf. Fig. 11). The latter one shows an unstable oscillatory behaviour at these higher speeds because it neither anticipates the trajectory nor the actuator delay. The performance of the cascade architecture also shows the

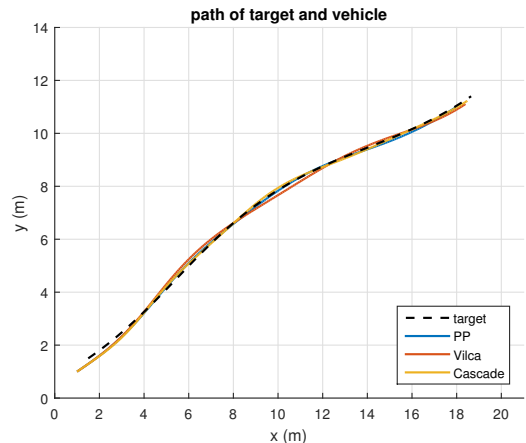


Fig. 7. Example of path for the simulations (target and follower)

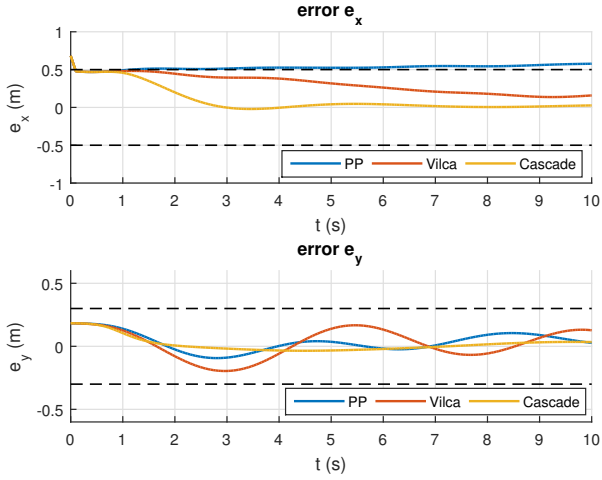


Fig. 8. Tracking performance (1<sup>st</sup> series)

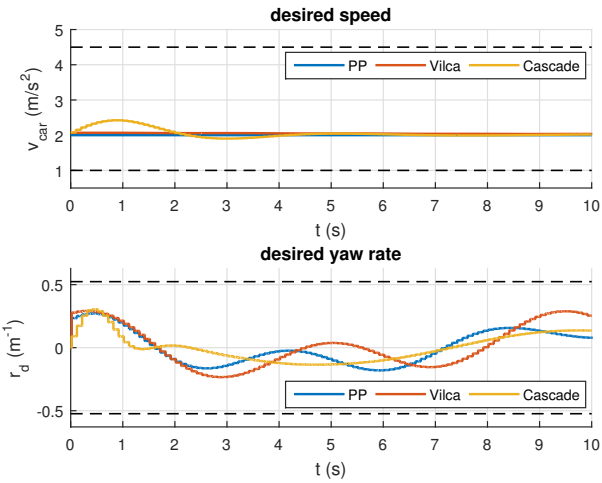


Fig. 9. Control signals (1<sup>st</sup> series)

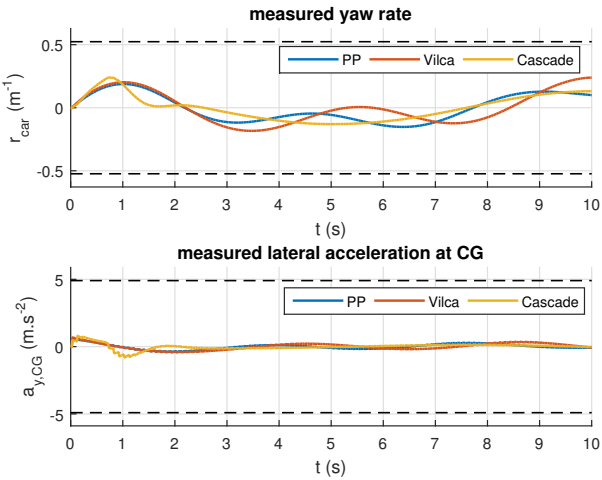


Fig. 10. Comfort indicators (1<sup>st</sup> series)

effectiveness of the inner controller to stabilize the yaw dynamics with a non nominal model. The control signals (Fig. 12) show an effective capping of both the desired speed and yaw rate with the cascade architecture, leading to a faster tracking errors convergence while respecting the introduced constraints. The comfort indicators (cf. Fig. 13) show undamped oscillations for both the Pursuit and Vilca's controller, and a slight overshoot for the cascade design. It could be removed with finer tuning of the MPC controller or the use of the real target's trajectory information.

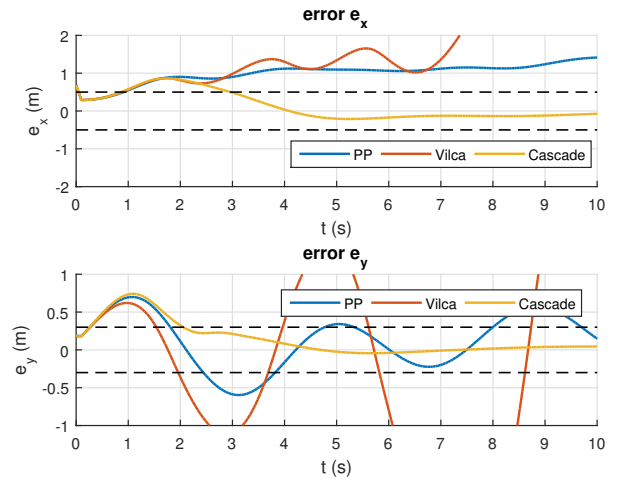


Fig. 11. Tracking performance (2<sup>nd</sup> series)

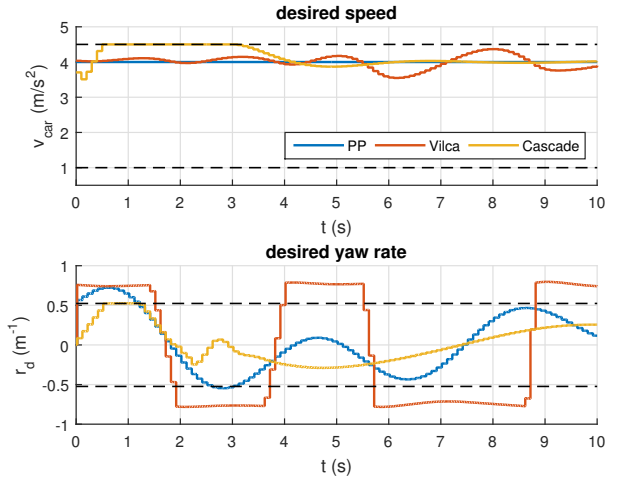


Fig. 12. Control signals (1<sup>st</sup> series)

## V. CONCLUSIONS

In this paper has been proposed a cascade architecture for autonomous vehicle navigation. This architecture seamlessly fills the tasks of trajectory/path tracking as well as dynamic target following and thus can cope with multi-vehicle scenarios. The architecture is divided into a robust low-level yaw stabilization controller that focuses on the vehicle's dynamics and a high-level tracking MPC controller that

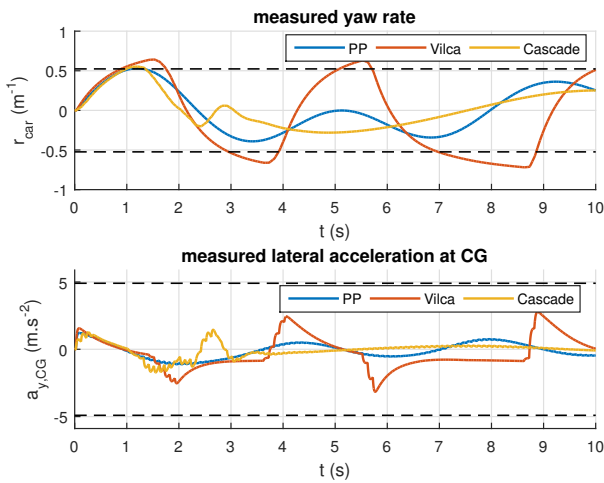


Fig. 13. Comfort indicators ( $2^{nd}$  series)

focuses mainly on the kinematics. This architecture shows an improvement in tracking performances, safety and flexibility compared to usual kinematic controllers for trajectory tracking. It is not intended to have an edge on performances compared to integrated approaches for trajectory tracking but to improve robustness and implementability. Further work will be carried out to check the performances of a linear MPC controller as well as a robustification of the MPC scheme. Real time implementability will be evaluated and Linear Parameter Varying (LPV) techniques for the low-level controller (parametrized by speed) will be investigated to improve its performance and operational envelope.

#### ACKNOWLEDGMENT

This work has been sponsored by the French government research program Investissements d'avenir through the RobotEx Equipment of Excellence (ANR-10-EQPX-44) and the IMoBS<sup>3</sup> Laboratory of Excellence (ANR-10-LABX-16-01), by the European Union through the program Regional competitiveness and employment 2014-2020 (FEDER - AURA region) and by the AURA region.

#### REFERENCES

- [1] Jürgen Ackermann. *Robust Control for Car Steering*. Tech. rep. German Aerospace Center, Institute of Robotics and System Dynamics, 1999.
- [2] Pedro Aguiar, Andrea Alessandretti, and Colin N Jones. "Trajectory-tracking and path-following controllers for constrained underactuated vehicles using Model Predictive Control". In: *European Control Conference* (2013), pp. 1371–1376.
- [3] A. Broggi et al. *Autonomous vehicles control in the VisLab Intercontinental Autonomous Challenge*. 2012.
- [4] Dongkyoung Chwa and Jin Young Choi. "Adaptive Nonlinear Guidance Law Considering Control Loop Dynamics". In: *IEEE Transactions on Aerospace and Electronic Systems* 39.4 (2003), pp. 1134–1143.

- [5] Paolo Falcone and Francesco Borrelli. "Low complexity MPC schemes for integrated vehicle dynamics control problems". In: *International Symposium on Advanced Vehicle Control 1* (2008), pp. 875–880.
- [6] Simon Hecker. "Robust Hinf-based vehicle steering control design". In: *Computer Aided Control System Design, 2006 IEEE International Conference on Control Applications, 2006 IEEE International Symposium on Intelligent Control, 2006 IEEE*. IEEE, Oct. 2006, pp. 1294–1299.
- [7] Pushkar Hingwe et al. "Linear parameter varying controller for automated lane guidance: Experimental study on tractor-trailers". In: *IEEE Transactions on Control Systems Technology* 10.6 (Nov. 2002), pp. 793–806.
- [8] Gabriel M. Hoffmann et al. "Autonomous Automobile Trajectory Tracking for Off-Road Driving : Controller Design , Experimental Validation and Racing". In: *Proceedings of the American Control Conference* (2007), pp. 2296–2301.
- [9] Farid Kendoul. "Survey of advances in guidance, navigation, and control of unmanned rotorcraft systems". In: *Journal of Field Robotics* 29.2 (Mar. 2012), pp. 315–378. arXiv: 10.1.1.91.5767.
- [10] Alexey S. Matveev, Hamid Teimoori, and Andrey V. Savkin. "A method for guidance and control of an autonomous vehicle in problems of border patrolling and obstacle avoidance". In: *Automatica* 47.3 (2011), pp. 515–524.
- [11] Jesús Morales et al. "Pure-pursuit reactive path tracking for nonholonomic mobile robots with a 2D laser scanner". In: *Eurasip Journal on Advances in Signal Processing* 2009.1 (2009), p. 935237.
- [12] Joshué Pérez, Vicente Milanés, and Enrique Onieva. "Cascade architecture for lateral control in autonomous vehicles". In: *IEEE Transactions on Intelligent Transportation Systems* 12.1 (Mar. 2011), pp. 73–82.
- [13] José Miguel Vilca, Lounis Adouane, and Youcef Mezouar. "A novel safe and flexible control strategy based on target reaching for the navigation of urban vehicles". In: *Robotics and Autonomous Systems* 70 (Aug. 2015), pp. 215–226.
- [14] José Miguel Vilca, Lounis Adouane, and Youcef Mezouar. "An Overall Control Strategy Based on Target Reaching for the Navigation of an Urban Electric Vehicle". In: *International Conference on Intelligent Robots and Systems (IROS)* (2013), pp. 728–734.
- [15] Danny Yadron and Dan Tynan. "Tesla driver dies in first fatal crash while using autopilot mode". In: *The Guardian* (2016).